

|  |                        |   |
|--|------------------------|---|
| WAAS<br>CH <b>93915</b><br><b>W34A</b> | APP CRS<br><b>340°</b> | Rwy Ldg<br>TDZE <b>1600</b><br>Apt Elev <b>1636</b> |
|--|------------------------|---|

# RNAV (GPS) RWY 34

GREATER BINGHAMTON/EDWIN A LINK FLD (BGM)

RNP APCH.

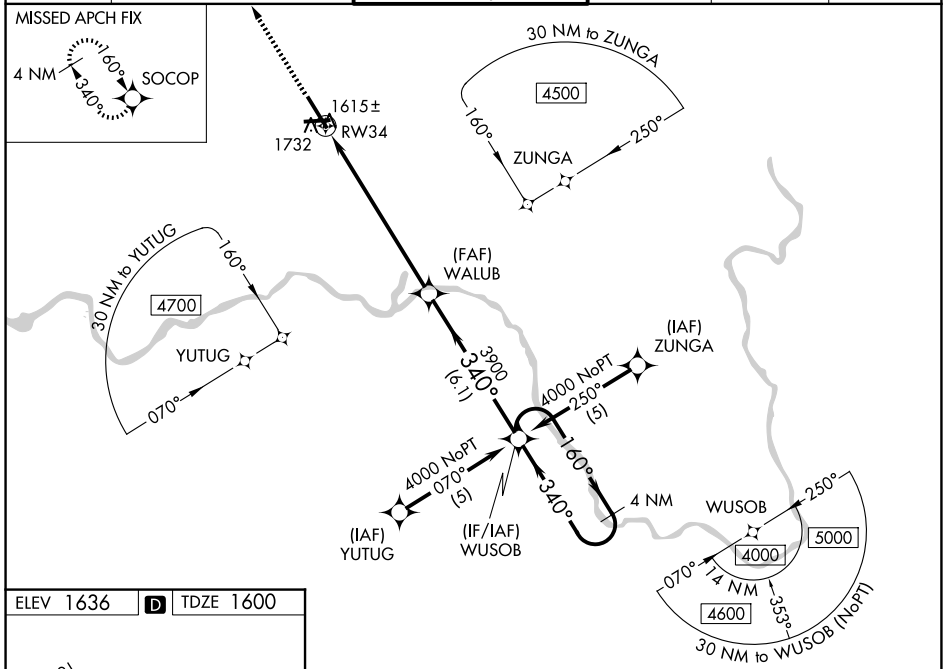
**▼** For uncompensated Baro-VNAV systems, LNAV/VNAV NA below -18°C (0°F) or above 46°C (114°F). When local altimeter setting not received, use Ithaca altimeter setting and increase all DA 138 feet and all MDA 140 feet, increase LPV all Cats, LNAV Cats C and D and Circling Cat C and D visibility ½ SM, and LNAV/VNAV all Cats visibility ½ SM. For inoperative MALSR when using Ithaca altimeter setting increase LPV all Cats visibility to RVR 6000. Baro-VNAV and VDP NA when using Ithaca altimeter setting.

MALSR

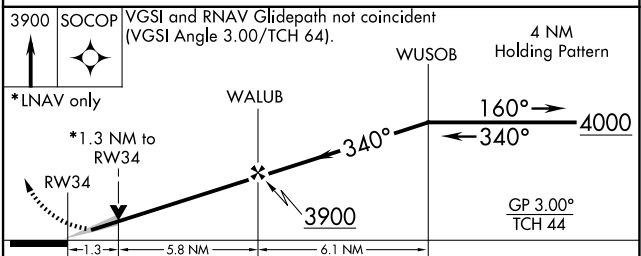
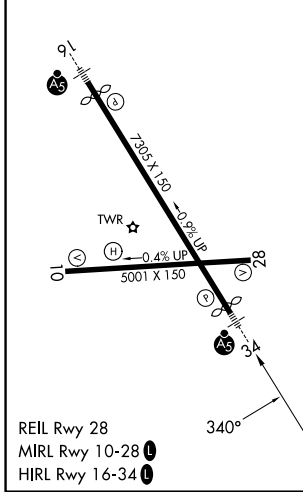


**MISSED APPROACH:**  
Climb to 3900 direct  
SOCOP and hold.

|                       |  |  |                         |                           |                         |
|-----------------------|--|--|-------------------------|---------------------------|-------------------------|
| ATIS<br><b>128.15</b> | BINGHAMTON APP CON *<br><b>118.6 257.625</b> | BINGHAMTON TOWER *<br><b>119.3 (CTAF) 0 239.25</b> | GND CON<br><b>121.9</b> | CLNC DEL<br><b>125.05</b> | UNICOM<br><b>122.95</b> |
|-----------------------|--|--|-------------------------|---------------------------|-------------------------|



|           |          |           |
|-----------|----------|-----------|
| ELEV 1636 | <b>D</b> | TDZE 1600 |
|-----------|----------|-----------|



|              |         |             |                         |                        |
|--------------|---------|-------------|-------------------------|------------------------|
| CATEGORY     | A       | B           | C                       | D                      |
| LPV DA       |         | 1800/24     | 200 (200-½)             |                        |
| LNAV/VNAV DA |         | 2082/60     | 482 (500-1¼)            |                        |
| LNAV MDA     | 2040/24 | 440 (500-½) | 2040/40<br>440 (500-¾)  | 2040/50<br>440 (500-1) |
| CIRCLING     | 2120-1  | 484 (500-1) | 2120-1½<br>484 (500-1½) | 2200-2<br>564 (600-2)  |

NE-2, 11 JUN 2026 to 09 JUL 2026

NE-2, 11 JUN 2026 to 09 JUL 2026