

JUNPR SIX DEPARTURE (RNAV)

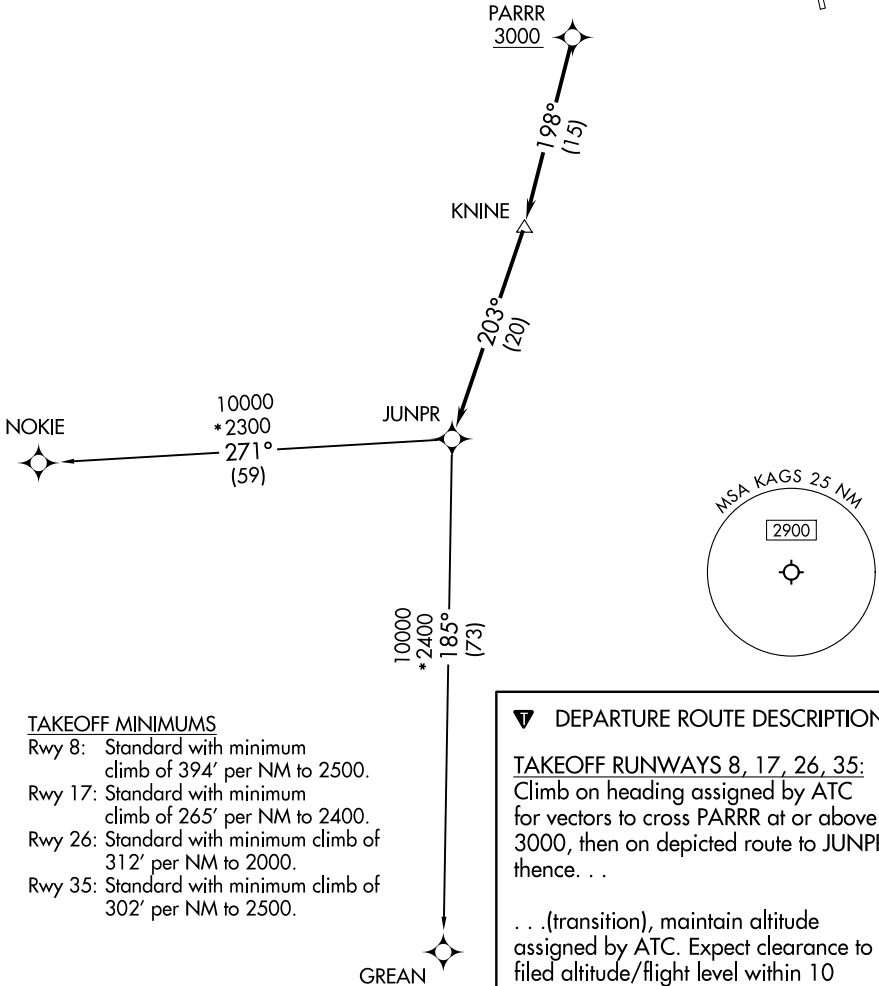
AUGUSTA, GEORGIA

**TOP ALTITUDE:
ASSIGNED BY ATC**

RNAV 1 - DME/DME/IRU or GPS required.
RADAR required.

AUGUSTA DEP CON ★
126.8 270.3
CLNC DEL
118.65
AUGUSTA TOWER ★
118.7 (CTAF) 239.3

NOTE: Do not exceed 250K until advised by ATC.



TAKEOFF MINIMUMS

- Rwy 8: Standard with minimum climb of 394' per NM to 2500.
- Rwy 17: Standard with minimum climb of 265' per NM to 2400.
- Rwy 26: Standard with minimum climb of 312' per NM to 2000.
- Rwy 35: Standard with minimum climb of 302' per NM to 2500.

▼ DEPARTURE ROUTE DESCRIPTION

TAKEOFF RUNWAYS 8, 17, 26, 35:
Climb on heading assigned by ATC for vectors to cross PARRR at or above 3000, then on depicted route to JUNPR, thence. . .

. . . (transition), maintain altitude assigned by ATC. Expect clearance to filed altitude/flight level within 10 minutes after departure.

GREAN TRANSITION (JUNPR6.GREAN)
NOKIE TRANSITION (JUNPR6.NOKIE)

NOTE: Chart not to scale.

SE-4, 11 JUN 2026 to 09 JUL 2026

SE-4, 11 JUN 2026 to 09 JUL 2026