

COCOA BEACH, FLORIDA

ILS or LOC RWY 3

LOC I-COF 109.1	APCH CRS 027°	Rwy Idg TDZE Arprt Elev 9008 5 8	[USAF]	PATRICK SFB (KCOF)
---------------------------	-------------------------	----------------------------------------------------------------------	--------	--------------------

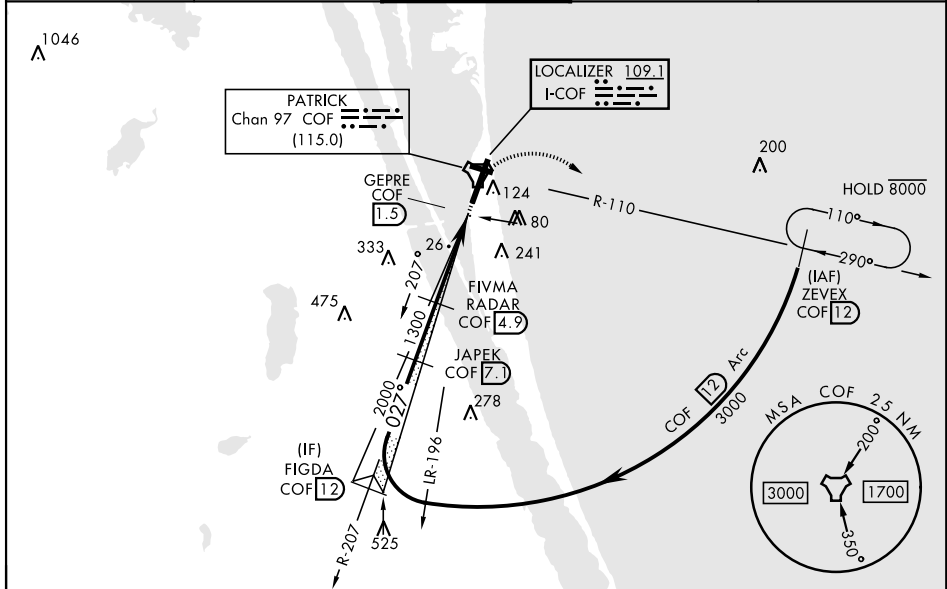
DME required

▼ * When ALS inop, increase RVR to 40 and vis to 3/4 mile.
 ** When ALS inop, increase CAT AB RVR to 55, vis to 1 mile;
 CAT CD vis to 1 3/8 miles.
 *** Circling not authorized NW of Rwy 3-21. When Rwy 29 VGSI inop, circling to Rwy 29 NA at night. When circling to Rwy 29 at night, operational VGSI required, remain on or above VGSI glidepath until threshold.

ALSF-1

MISSED APPROACH: Climb to 600, then climbing right turn to 3000 and intercept COF TACAN R-110 direct ZEVEX/COF 12 DME and hold.

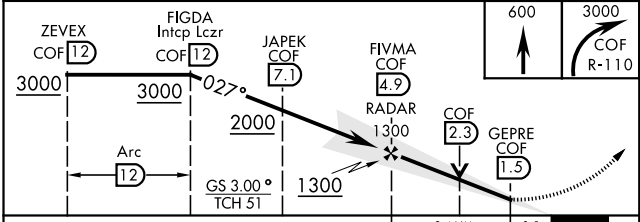
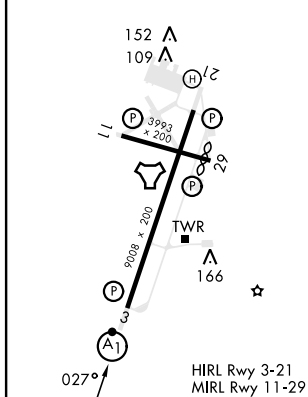
ATIS ★ 119.175 273.5	ORLANDO APP CON★ 126.025 281.425	TOWER ★ 133.75 269.375	GND CON ★ 124.35 335.8	CLNC DEL ★ 118.4 289.4
--------------------------------	--------------------------------------------	----------------------------------	----------------------------------	----------------------------------



SE-3, 11 JUN 2026 to 09 JUL 2026

SE-3, 11 JUN 2026 to 09 JUL 2026

ELEV	8	D	TDZE	5
------	---	---	------	---



CATEGORY	A	B	C	D
S-ILS 3 *	205/24		200	(200-1/2)
S-LOC 3 **	460/24	455 (500-1/2)	460/45	455 (500-7/8)
CIRCLING***	520-1	512 (600-1)	540-1 1/2 532 (600-1 1/2)	560-2 552 (600-2)

COCOA BEACH, FLORIDA 28° 14'N-80° 37'W PATRICK SFB (KCOF)

Amtd 3 02NOV23

ILS or LOC RWY 3