

TACAN RWY 21

TACAN COF Chan 97	APCH CRS 217°	Rwy ldg TDZE Arpt Elev 9008 7 8
-----------------------------	-------------------------	---

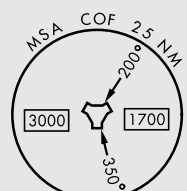
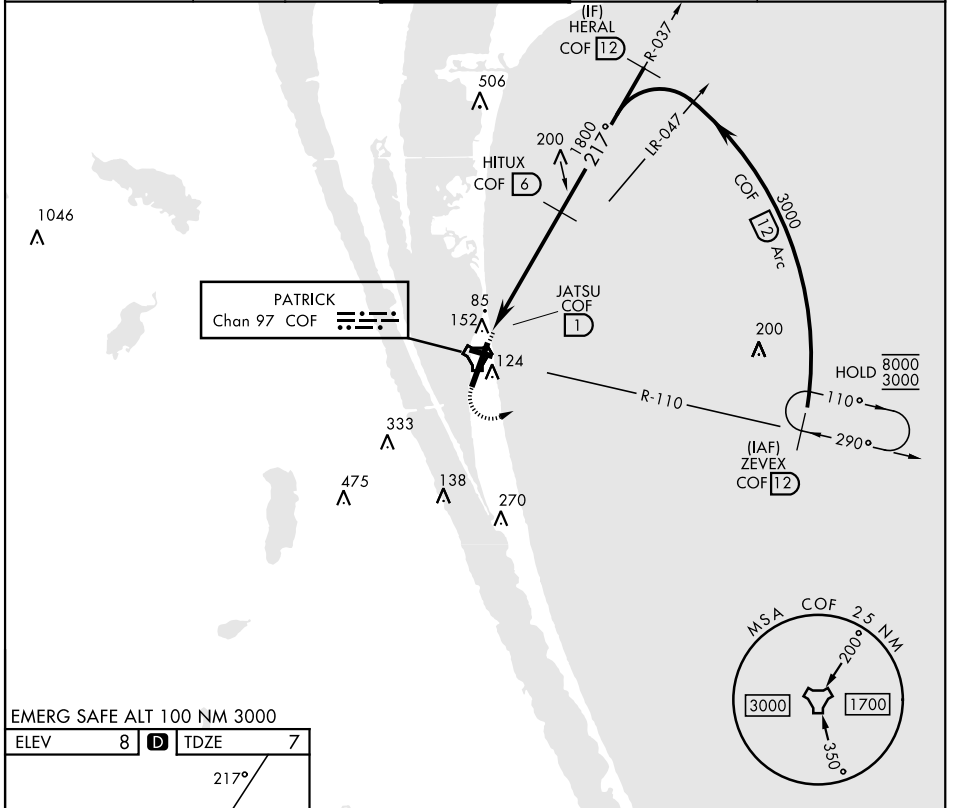
[USAF]

PATRICK SFB (KCOF)

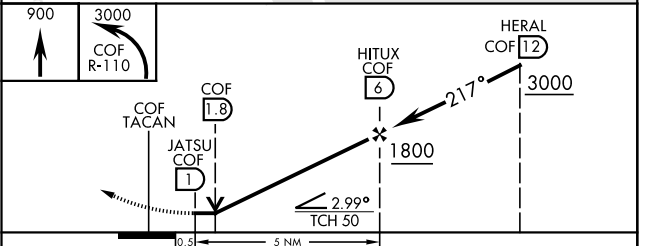
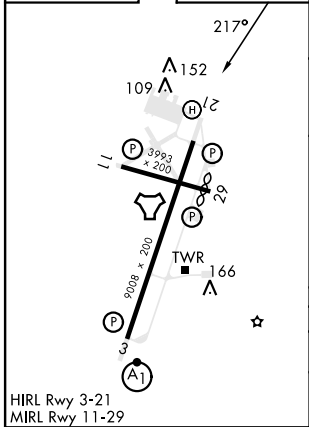
▼ * When Circling to Rwy 29 at night, operational VGSI required, remain on or above VGSI glidepath until threshold. Circling not authorized NW of Rwy 3-21.

MISSED APPROACH: Climb to 900, then climbing left turn to 3000 to intercept the COF TACAN R-110 to ZEVEX and hold.

ATIS ★ 119.175 273.5	ORLANDO APP CON★ 126.025 281.425	TOWER★ 133.75 269.375	GND CON★ 124.35 335.8	CLNC DEL★ 118.4 289.4
--------------------------------	--	---------------------------------	---------------------------------	---------------------------------



EMERG SAFE ALT 100 NM 3000
ELEV 8 TDZE 7



CATEGORY	A	B	C	D	E
S-21	460/55	452 (500-1)	460-1 $\frac{3}{8}$	452 (500-1 $\frac{3}{8}$)	
CIRCLING*	520-1	512 (600-1)	540-1 $\frac{1}{2}$ 532 (600-1 $\frac{1}{2}$)	560-2 552 (600-2)	580-2 572 (600-2)

TACAN RWY 21

SE-3, 11 JUN 2026 to 09 JUL 2026

SE-3, 11 JUN 2026 to 09 JUL 2026