

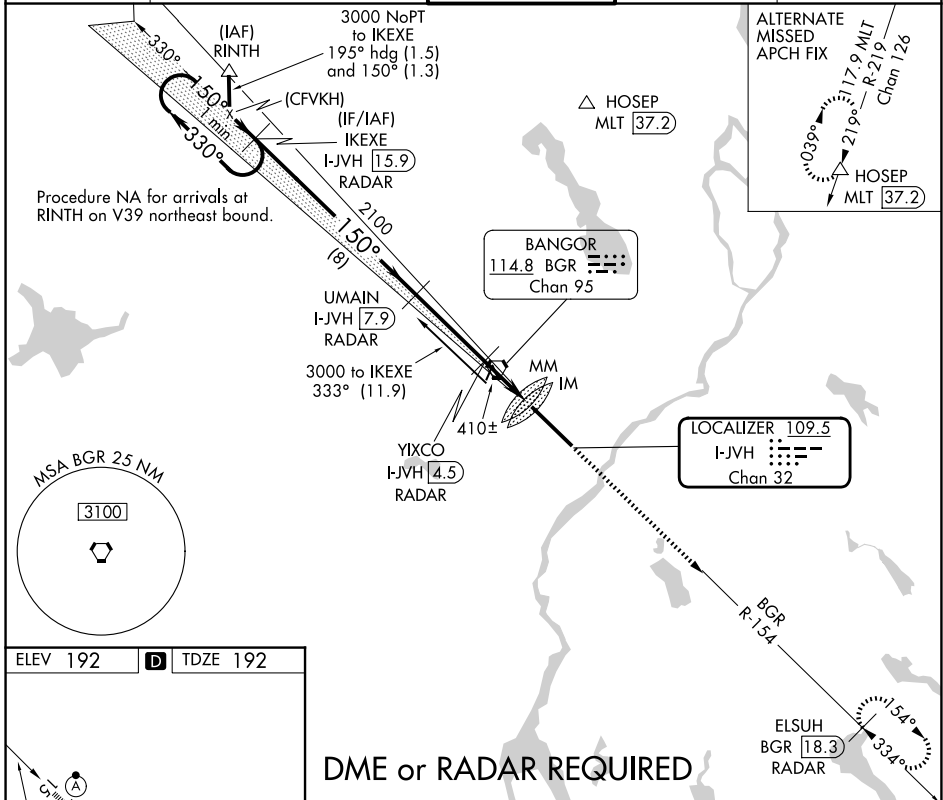
LOC/DME	I-JVH	APP CRS	Rwy Ldg	11440
109.5		150°	TDZE	192
Chan 32			Apt Elev	192

ILS Y or LOC Y RWY 15

BANGOR INTL (BGR)

<p>ASR</p>	<p>Circling NA NE of Rwy 15-33. DME or RADAR required. For inoperative ALS, increase S-ILS 15 Cat E visibility to RVR 4000, and S-LOC 15 Cat C/D/E visibility to 1 1/8 SM.</p>	<p>ALSIF-2</p>	<p>MISSED APPROACH: Climb to 3000 on heading 150° and BGR VORTAC R-154 to ELSUH/BGR 18.3 DME/RADAR and hold.</p>

ATIS	BANGOR APP CON	BANGOR TOWER	GND CON	CLNC DEL
127.75	118.925 239.3	120.7 233.7	121.9 348.6	135.9 348.6



NE-1, 11 JUN 2026 to 09 JUL 2026

NE-1, 11 JUN 2026 to 09 JUL 2026