

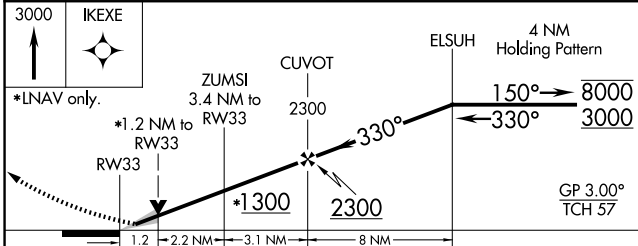
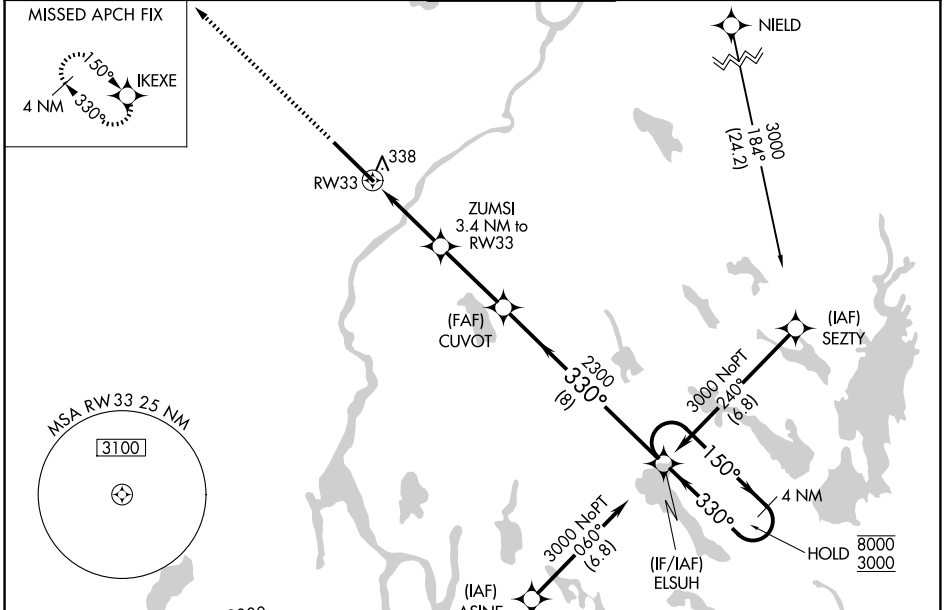
WAAS CH <b>78007</b> <b>W33A</b>	APP CRS <b>330°</b>	Rwy Ldg <b>11440</b> TDZE <b>163</b> Apt Elev <b>192</b>
--	------------------------	--

# RNAV (GPS) RWY 33

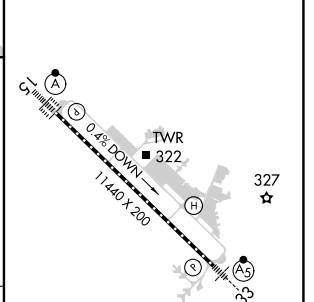
BANGOR INTL (BGR)

RNP APCH.	<p><b>⚠</b> Circling NA northeast of Rws 15 and 33. For uncompensated Baro-VNAV systems, LNAV/VNAV NA below -18°C or above 54°C. For inop ALS, increase LPV Cat E visibility to RVR 4000, LNAV/VNAV Cat E visibility to RVR 5500, and LNAV Cat E visibility to 1¼ SM. **RVR 1800 authorized with use of FD or AP or HUD to DA.</p>	MALSR <b>AS</b>	MISSED APPROACH: Climb to 3000 direct IKEXE and hold.
-----------	--	--------------------	--

ATIS <b>127.75</b>	BANGOR APP CON <b>118.925 239.3</b>	BANGOR TOWER <b>120.7 233.7</b>	GND CON <b>121.9 348.6</b>	CLNC DEL <b>135.9 348.6</b>
-----------------------	--	------------------------------------	-------------------------------	--------------------------------



ELEV 192	<b>D</b>	TDZE 163
----------	----------	----------



CATEGORY	A	B	C	D	E
LPV DA**	363/24		200 (200-½)		
LNAV/VNAV DA	519/30		356 (400-¾)		
LNAV MDA	600/24 437 (500-½)		600/40 437 (500-¾)		
CIRCLING	640-1 448 (500-1)	720-1 528 (600-1)	740-1½ 548 (600-1½)	820-2 628 (700-2)	880-2½ 688 (700-2½)

GP 3.00° TCH 57
TDZ/CL Rwy 15 HIRL Rwy 15-33

NE-1, 11 JUN 2026 to 09 JUL 2026

NE-1, 11 JUN 2026 to 09 JUL 2026