

APP CRS	Rwy Ldg	6700
164°	TDZE	163
	Apt Elev	171

RNAV (RNP) Z RWY 16

BELLINGHAM INTL (BLI)

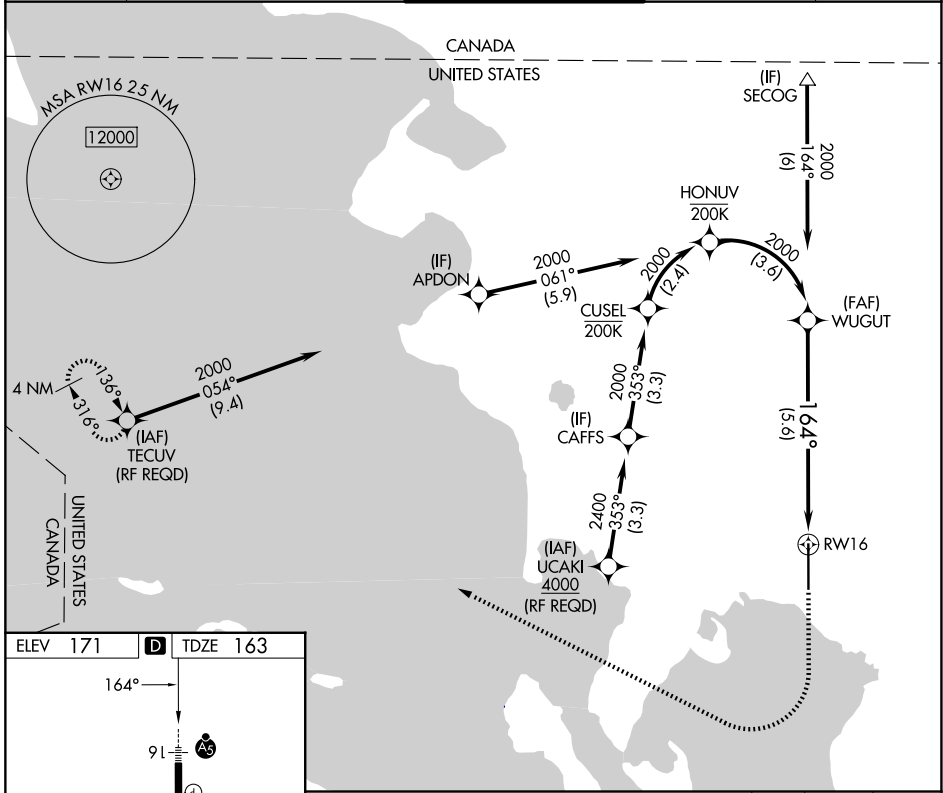
RNP AR APCH - GPS. Authorization required. From CUSUL, HONUUV: RF.

For uncompensated Baro-VNAV systems, procedure NA below -10°C or above 54°C.

MAJSR

MISSED APPROACH: Climb to 700 then climbing right turn to 2000 direct TECUV and hold.

ATIS 134.45	VICTORIA TERMINAL APP CON 132.7	BELLINGHAM TOWER* 124.9 (CTAF) 379.3	GND CON 127.4 379.3	UNICOM 122.95
-----------------------	---	---	-------------------------------	-------------------------



NW-1, 11 JUN 2026 to 09 JUL 2026

NW-1, 11 JUN 2026 to 09 JUL 2026

ELEV 171	D	TDZE 163
----------	----------	----------

REIL Rwy 34
HIRL Rwy 16-34

See planview for multiple IF locations.

WUGUT	700	2000	TECUV
-------	-----	------	-------

CATEGORY	A	B	C	D
RNP 0.30 DA	496/26 333 (400-½)			

AUTHORIZATION REQUIRED