

APP CRS <b>344°</b>	Rwy Ldg TDZE Apt Elev	<b>6700</b> <b>171</b> <b>171</b>
------------------------	-----------------------------	---

# RNAV (RNP) Z RWY 34

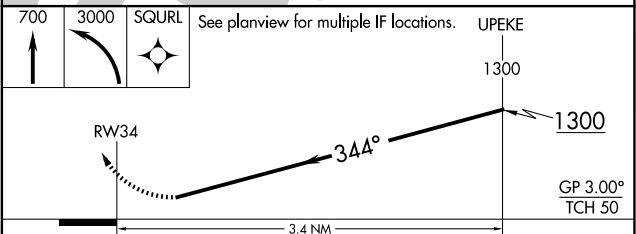
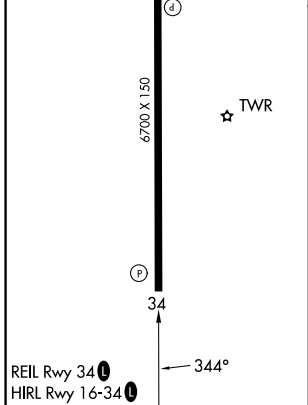
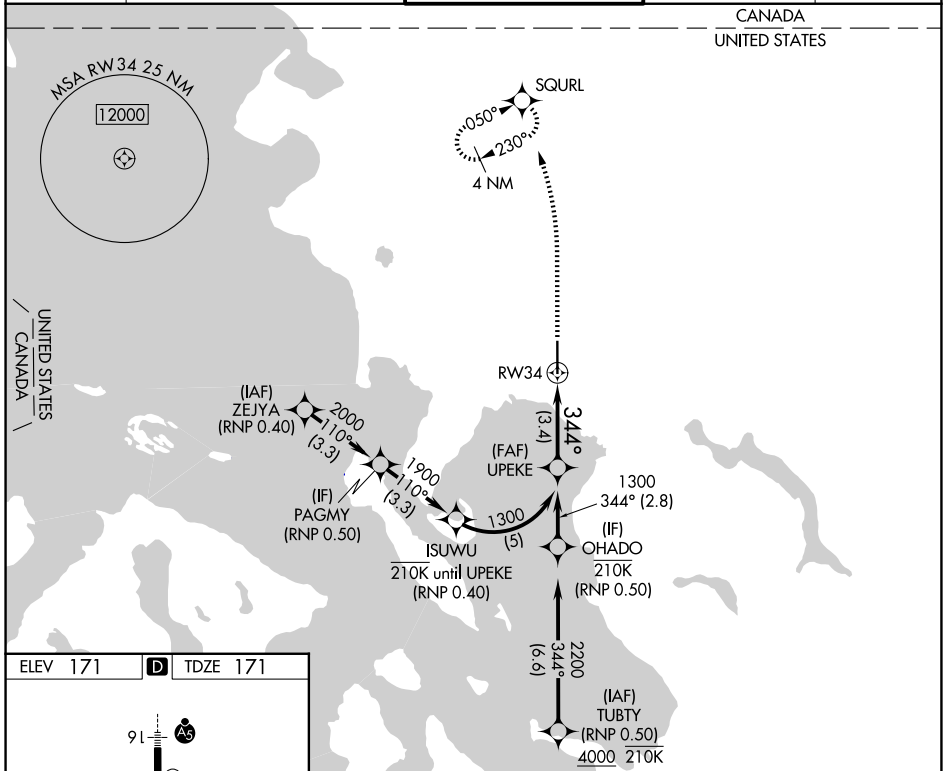
BELLINGHAM INTL (BLI)

RNP AR APCH - GPS. From PAGMY, OHADO: Min RNP 0.50.  
 Authorization required. From ISUWU: RF, Min RNP 0.40.

⚠ For uncompensated Baro-VNAV systems, procedure NA below -10°C or above 54°C.

MISSED APPROACH: Climb to 700 then climbing left turn to 3000 direct SQURL and hold, continue climb in hold to 3000.

ATIS <b>134.45</b>	VICTORIA TERMINAL APP CON <b>132.7</b>	BELLINGHAM TOWER ★ <b>124.9 (CTAF) 0 379.3</b>	GND CON <b>127.4 379.3</b>	UNICOM <b>122.95</b>
-----------------------	---	---	-------------------------------	-------------------------



CATEGORY	A	B	C	D
RNP 0.11 DA		444-7%	273 (300-7%)	
RNP 0.30 DA		577-1%	406 (500-1%)	

**AUTHORIZATION REQUIRED**

NW-1, 11 JUN 2026 to 09 JUL 2026

NW-1, 11 JUN 2026 to 09 JUL 2026