

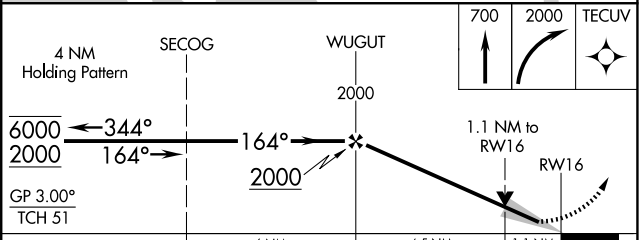
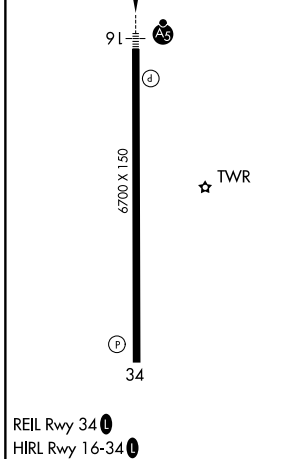
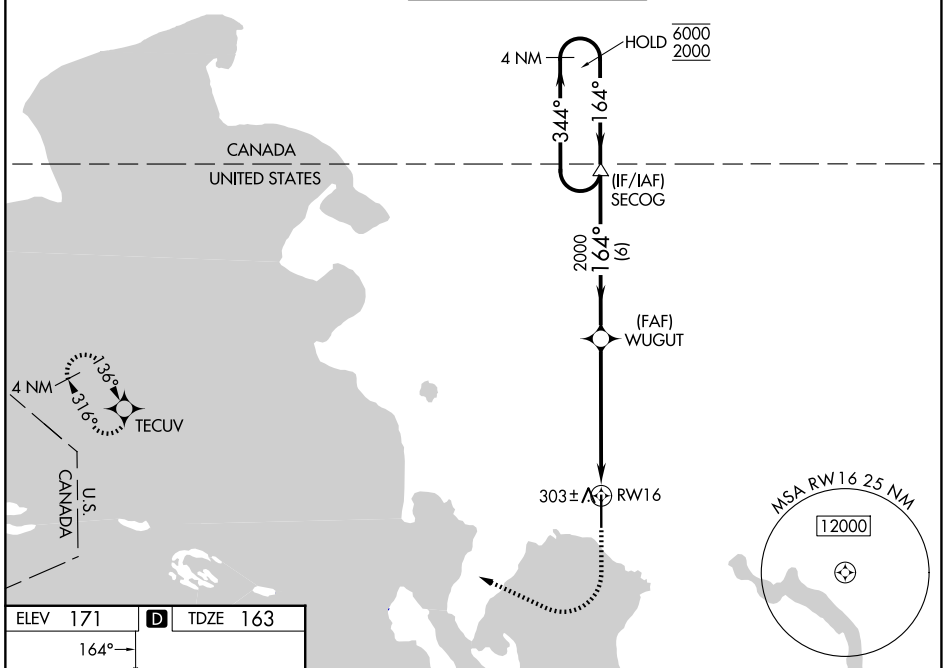
WAAS CH <b>45999</b>	APP CRS <b>164°</b>	Rwy Ldg TDZE Apt Elev	<b>6700</b> <b>163</b> <b>171</b>
-------------------------	------------------------	-----------------------------	---

# RNAV (GPS) Y RWY 16

BELLINGHAM INTL (BLI)

RNP APCH - GPS.		MALSR	MISSED APPROACH: Climb to 700 then climbing right turn to 2000 direct TECUV and hold.
⚠ For uncompensated Baro-VNAV systems, LNAV/VNAV NA below -10°C or above 54°C. *RVR 1800 authorized with use of FD or AP or HUD to DA.			

ATIS <b>134.45</b>	VICTORIA TERMINAL APP CON <b>132.7</b>	BELLINGHAM TOWER★ <b>124.9 (CTAF) 0 379.3</b>	GND CON <b>127.4 379.3</b>	UNICOM <b>122.95</b>
-----------------------	---	--	-------------------------------	-------------------------



CATEGORY	A	B	C	D
LPV DA*	363/24 200 (200-½)			
LNAV/VNAV DA	486/26 323 (400-½)			
LNAV MDA	560/24	397 (400-½)	560/35	397 (400-¾)
CIRCLING	640-1	469 (500-1)	860-2 689 (700-2)	1140-3 969 (1000-3)

NW-1, 11 JUN 2026 to 09 JUL 2026

NW-1, 11 JUN 2026 to 09 JUL 2026