


LOC I-JDU 111.15	APP CRS 319°	Rwy Ldg TDZE 442 Apt Elev 459
----------------------------	------------------------	---

ILS or LOC RWY 32R

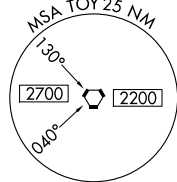
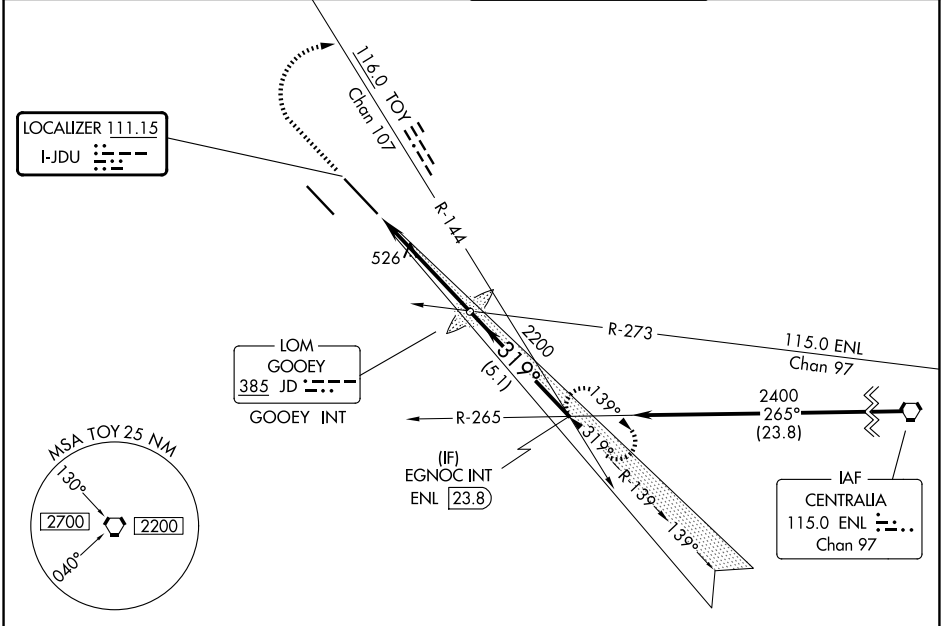
SCOTT AFB/MIDAMERICA ST LOUIS (BLV)

ASR For inop ALS, increase S-ILS 32R Cat E visibility to RVR 4000 and increase S-LOC Cat E visibility to RVR 5000.
* RVR 1800 authorized with use of FD or AP or HUD to DA.

MALS 

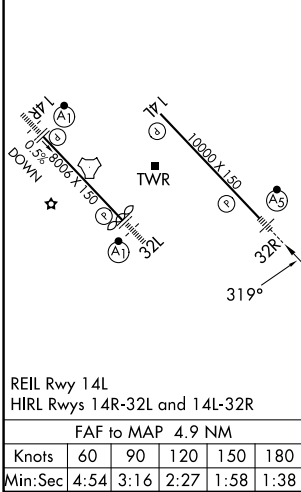
MISSED APPROACH: Climb to 1500 then climbing right turn to 2400 on heading 194° and TOY VORTAC R-144 to EGNOC INT and hold.

ATIS 128.7 256.7	ST LOUIS APP CON 125.2 281.5	SCOTT TOWER 128.25 253.5	GND CON 119.2 275.8
----------------------------	--	------------------------------------	-------------------------------



Procedure NA for arrivals on ENL VORTAC airway radials 225 CW 294.

ELEV 459	D	TDZE 442
-----------------	----------	-----------------



1500	2400	TOY R-144	EGNOC INT	VGSI and ILS glidepath not coincident (VGSI Angle 3.00/TCH 71).						
hdg 194°		GOOEY LOM/INT			EGNOC INT					
2043		2200			2400					
4.9 NM		5.1 NM			GS 3.00° TCH 55					
CATEGORY	A	B	C	D	E					
S-ILS 32R *	642/24					200 (200-½)				
S-LOC 32R	780/24		338 (400-½)			780/26		338 (400-½)		
CIRCLING	1000-1		1120-1		1240-2¼		1240-2½		1240-2¾	
	541 (600-1)		661 (700-1)		781 (800-2¼)		781 (800-2½)		781 (800-2¾)	

EC-3, 11 JUN 2026 to 09 JUL 2026

EC-3, 11 JUN 2026 to 09 JUL 2026