

LINDBERGH NINE DEPARTURE

ST LOUIS DEP CON
125.2 281.5
ATIS
128.7 256.7
CLNC DEL
119.875 263.025
GND CON
119.2 275.8
SCOTT TOWER
128.25 253.5

DME and RADAR required.

**TOP ALTITUDE:
ASSIGNED BY ATC**

ST LOUIS
117.4 STL : : : :
Chan 121

VICHY
117.7 VIH : : : :
Chan 124

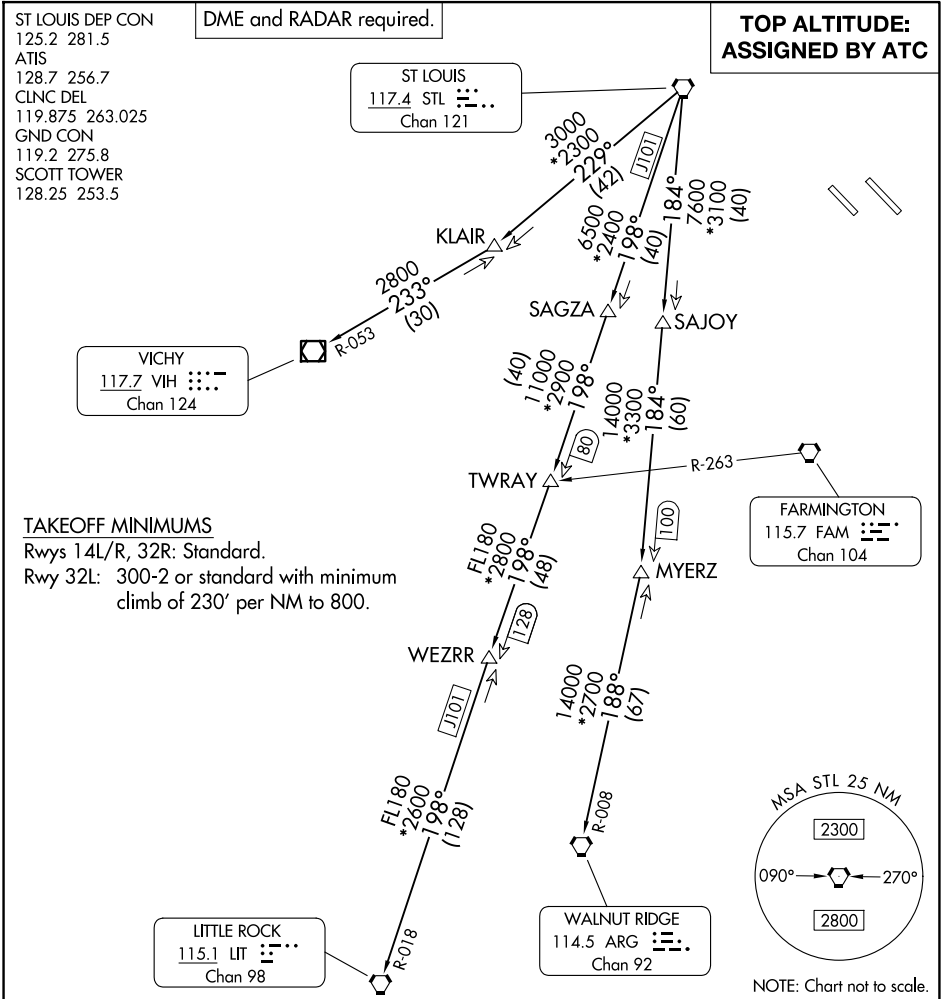
FARMINGTON
115.7 FAM : : : :
Chan 104

LITTLE ROCK
115.1 LIT : : : :
Chan 98

WALNUT RIDGE
114.5 ARG : : : :
Chan 92

TAKEOFF MINIMUMS

Rwys 14L/R, 32R: Standard.
Rwy 32L: 300-2 or standard with minimum
climb of 230' per NM to 800.



EC-3, 11 JUN 2026 to 09 JUL 2026

EC-3, 11 JUN 2026 to 09 JUL 2026

DEPARTURE ROUTE DESCRIPTION

TAKEOFF ALL RUNWAYS: Climb on assigned heading for RADAR vectors to appropriate route, maintain ATC assigned altitude and expect filed altitude 10 minutes after departure.

LITTLE ROCK TRANSITION (LINDY9.LIT): From over STL VORTAC on STL R-198 and LIT R-018 to LIT VORTAC.

MYERZ TRANSITION (LINDY9.MYERZ): From over STL VORTAC on STL R-184 to MYERZ.

VICHY TRANSITION (LINDY9.VIH): From over STL VORTAC on STL R-229 and VIH R-053 to VIH VOR/DME.

WALNUT RIDGE TRANSITION (LINDY9.ARG): From over STL VORTAC on STL R-184 and ARG R-008 to ARG VORTAC.

LINDBERGH NINE DEPARTURE