

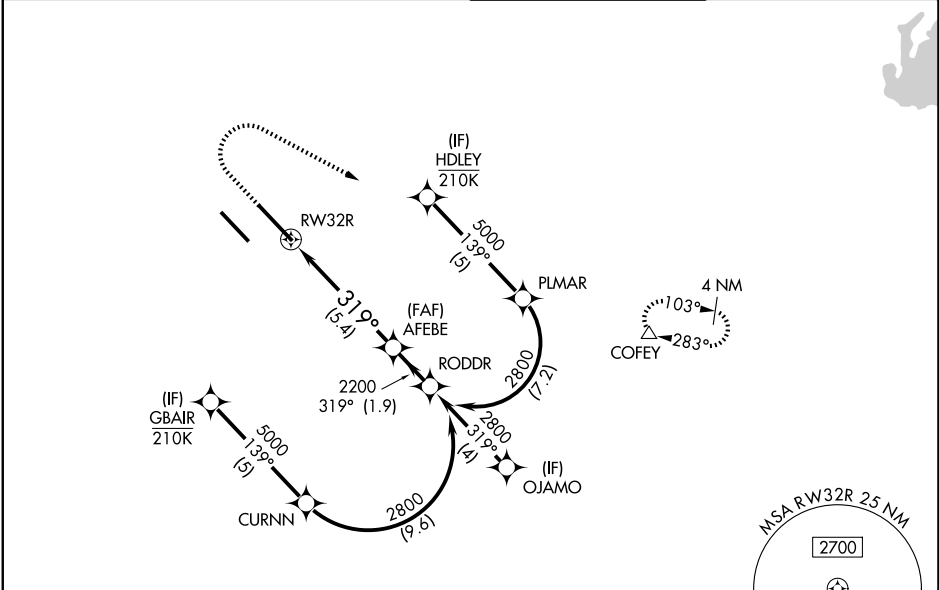
APP CRS	Rwy Ldg	10000
319°	TDZE	442
	Apt Elev	459

RNAV (RNP) Z RWY 32R

SCOTT AFB/MIDAMERICA ST LOUIS (BLV)

RNP AR APCH - GPS. Authorization required. From PLMAR, CURNN: RF		MALS R	MISSED APPROACH: Climb to 1500 then climbing right turn to 3000 direct COFEY and hold.
 ASR	For uncompensated Baro-VNAV systems, procedure NA below -15°C or above 54°C. For inop ALS, increase RNP 0.30 all Cats visibility to RVR 4500.		

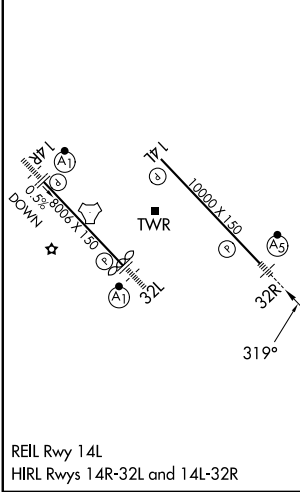
ATIS 128.7 256.7	ST LOUIS APP CON 125.2 281.5	SCOTT TOWER 128.25 253.5	GND CON 119.2 275.8
----------------------------	--	------------------------------------	-------------------------------



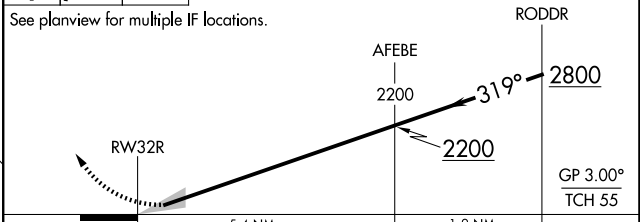
EC-3, 11 JUN 2026 to 09 JUL 2026

EC-3, 11 JUN 2026 to 09 JUL 2026

ELEV 459	D	TDZE 442
----------	----------	----------



1500	3000	COFEY	VGSI and RNAV glidepath not coincident (VGSI Angle 3.00/TCH 71).



CATEGORY	A	B	C	D
RNP 0.30 DA	747/24		305 (300-1/2)	

AUTHORIZATION REQUIRED