

WAAS CH 58218 W14A	APP CRS 139°	Rwy Ldg 10000 TDZE 442 Apt Elev 459
--	------------------------	--

RNAV (GPS) Y RWY 14L

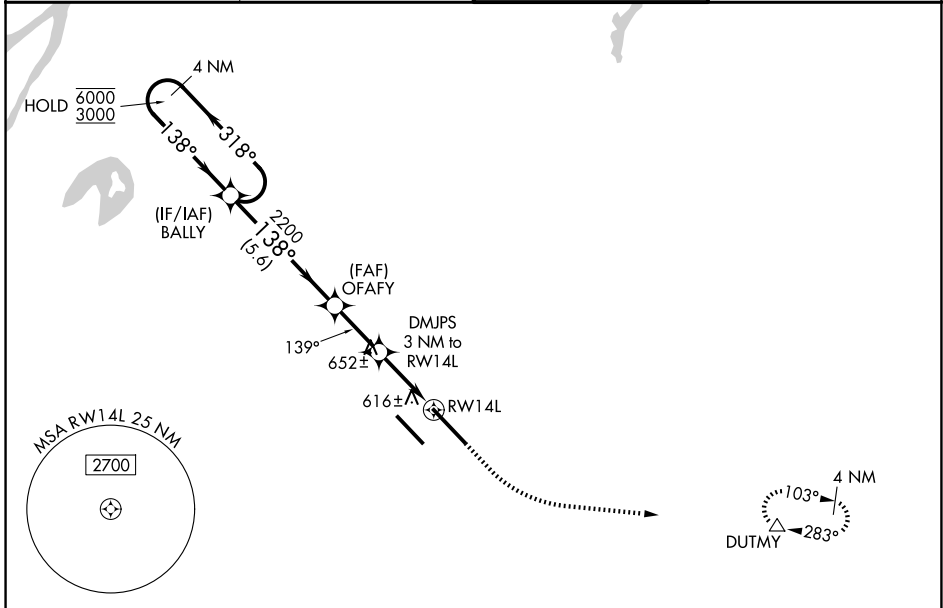
SCOTT AFB/MIDAMERICA ST LOUIS (BLV)

RNP APCH - GPS.

▼ For uncompensated Baro-VNAV systems, LNAV/VNAV NA below -15°C or above 54°C. Rwy 14L helicopter visibility reduction below RVR 4000 NA.
▲ Simultaneous approach authorized.
 ASR

MISSED APPROACH: Climb to 2000 then climbing left turn to 3000 direct DUTMY and hold.

ATIS 128.7 256.7	ST LOUIS APP CON 125.2 281.5	SCOTT TOWER 128.25 253.5	GND CON 119.2 275.8
----------------------------	--	------------------------------------	-------------------------------



EC-3, 11 JUN 2026 to 09 JUL 2026

EC-3, 11 JUN 2026 to 09 JUL 2026

4 NM Holding Pattern		VGSI and RNAV glidepath not coincident (VGSI Angle 3.00/TCH 71).		2000	3000	DUTMY	ELEV 459	D	TDZE 442
GP 3.00° TCH 55		BALLY	OFAFY	DMJPS 3 NM to RWY 14L	1.2 NM to RWY 14L	RWY 14L			
		5.6 NM	2.4 NM	1.8 NM	1.2 NM				
CATEGORY	A	B	C	D					
LPV DA	694/40		252 (300-¾)						
LNAV/VNAV DA	900-1⅓		458 (500-1⅓)						
LNAV MDA	900/55	458 (500-1)	900-1⅓	458 (500-1⅓)					
CIRCLING	1000-1 541 (600-1)	1120-1 661 (700-1)	1240-2¼ 781 (800-2¼)	1240-2½ 781 (800-2½)	REIL Rwy 14L HIRL Rws 14R-32L and 14L-32R				