

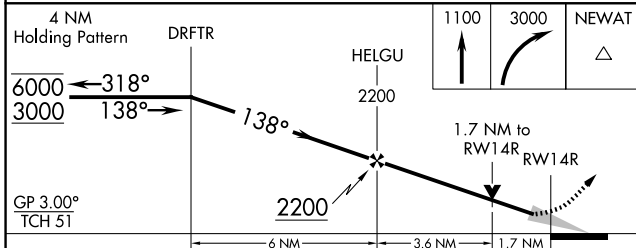
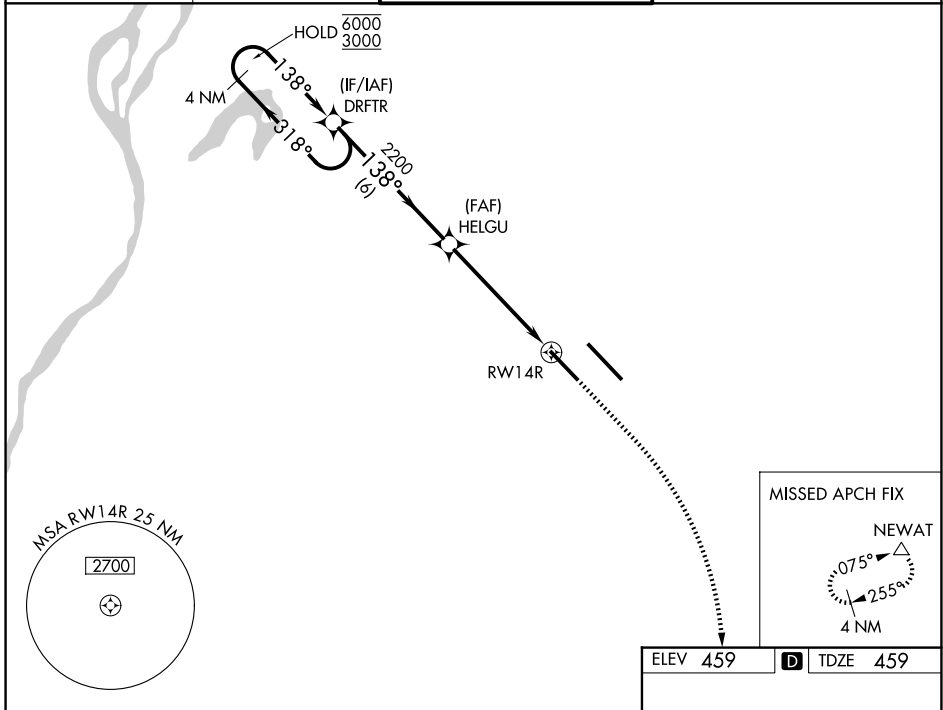
WAAS CH <b>61247</b> <b>W14B</b>	APP CRS <b>138°</b>	Rwy Ldg <b>8006</b> TDZE <b>459</b> Apt Elev <b>459</b>
--	------------------------	---

# RNAV (GPS) Y RWY 14R

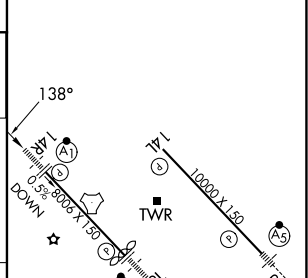
SCOTT AFB/MIDAMERICA ST LOUIS (BLV)

RNP APCH - GPS.	ALSIF-1 	MISSED APPROACH: Climb to 1100 then climbing right turn to 3000 direct NEWAT and hold.
Simultaneous approach authorized. For uncompensated Baro-VNAV systems, LNAV/VNAV NA below -15°C or above 54°C. For inop ALS, increase LNAV Cat C/D visibility to 1¼ SM. *RVR 1800 authorized with use of FD or AP or HUD to DA.		

ATIS <b>128.7 256.7</b>	ST LOUIS APP CON <b>125.2 281.5</b>	SCOTT TOWER <b>128.25 253.5</b>	GND CON <b>119.2 275.8</b>
----------------------------	--	------------------------------------	-------------------------------



ELEV 459	<b>D</b> TDZE 459
----------	-------------------



CATEGORY	A	B	C	D
LPV DA*	659/24		200 (200-½)	
LNAV/VNAV DA	1035-1¼		576 (600-1¼)	
LNAV MDA	1060/24	601 (700-½)	1060-1⅜	601 (700-1⅜)
CIRCLING	1060-1 601 (700-1)	1120-1 661 (700-1)	1240-2¼ 781 (800-2¼)	1240-2½ 781 (800-2½)

