




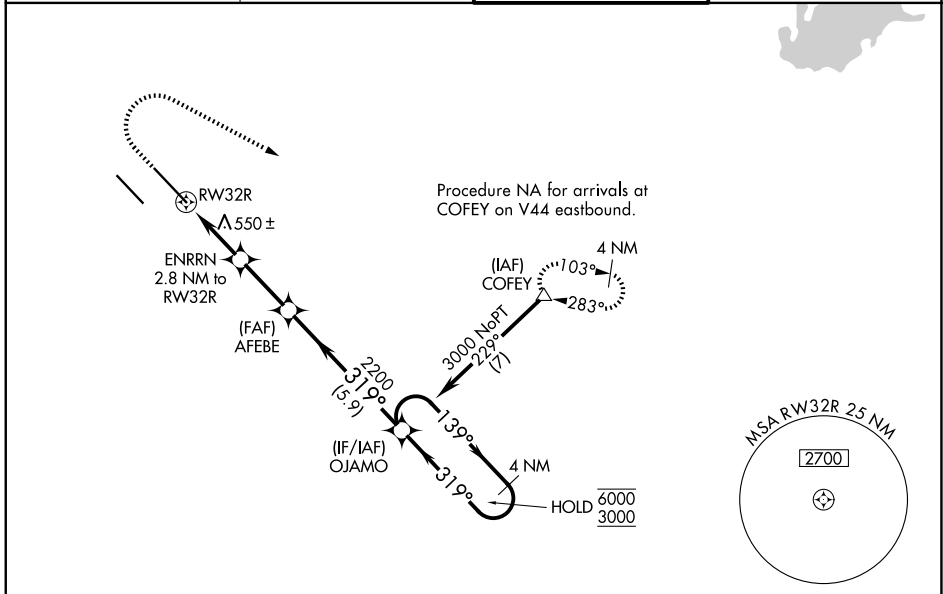
WAAS CH 50518 W32A	APP CRS 319°	Rwy Ldg 10000 TDZE 442 Apt Elev 459
--	------------------------	--

RNAV (GPS) Y RWY 32R

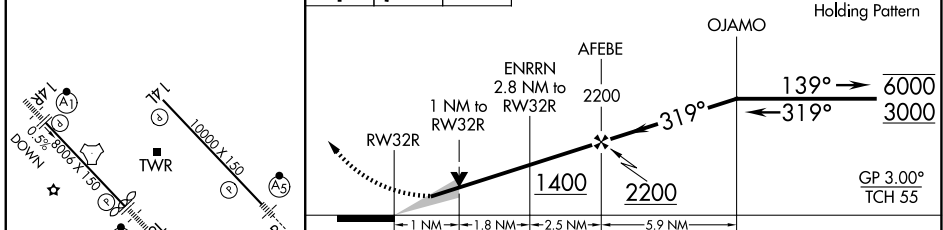
SCOTT AFB/MIDAMERICA ST LOUIS (BLV)

RNP APCH - GPS.		MALSR	MISSED APPROACH: Climb to 1500 then climbing right turn to 3000 direct COFEY and hold.
 For uncompensated Baro-VNAV systems, LNAV/VNAV NA below -15°C or above 54°C. Simultaneous approach authorized.  ASR *RVR 1800 authorized with use of FD or AP or HUD to DA.			

ATIS 128.7 256.7	ST LOUIS APP CON 125.2 281.5	SCOTT TOWER 128.25 253.5	GND CON 119.2 275.8
----------------------------	--	------------------------------------	-------------------------------



ELEV 459	D TDZE 442	1500	3000	COFEY	VGSI and RNAV glidepath not coincident (VGSI Angle 3.00/TCH 71).
----------	-------------------	------	------	-------	--



	CATEGORY	A	B	C	D
LPV DA*		642/24		200 (200-½)	
LNAV/VNAV DA		830/35		388 (400-⅙)	
LNAV MDA		840/24		840/35 398 (400-⅙)	
CIRCLING		1000-1 541 (600-1)	1120-1 661 (700-1)	1240-2¼ 781 (800-2¼)	1240-2½ 781 (800-2½)

REIL Rwy 14L
HIRL Rwy 14R-32L and 14L-32R

EC-3, 11 JUN 2026 to 09 JUL 2026

EC-3, 11 JUN 2026 to 09 JUL 2026