

WAAS CH <b>45632</b> <b>W24A</b>	APP CRS <b>240°</b>	Rwy Ldg TDZE Apt Elev	<b>4601</b> <b>2573</b> <b>2573</b>
--	------------------------	-----------------------------	---

# RNAV (GPS) RWY 24

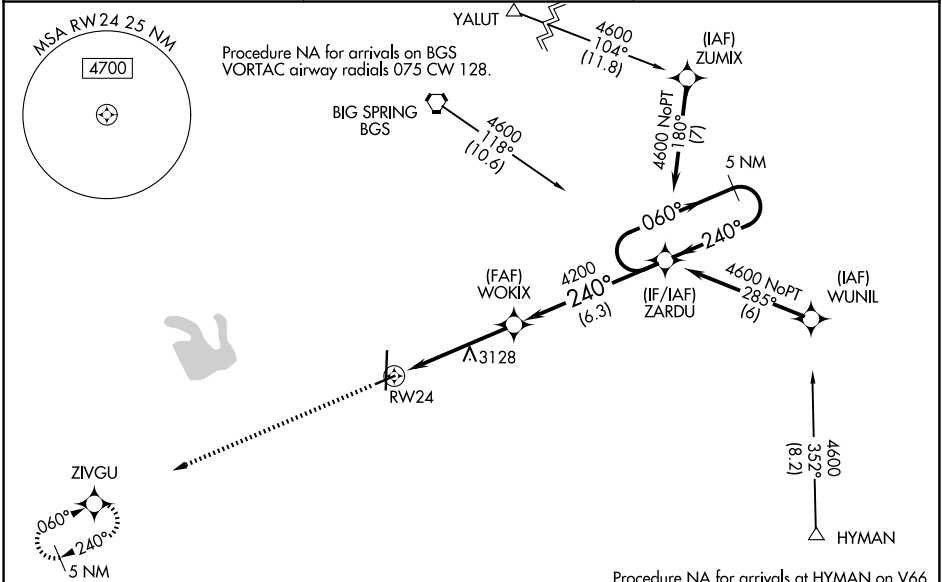
BIG SPRING/MC MAHON-WRINKLE (BPG)

RNP APCH.

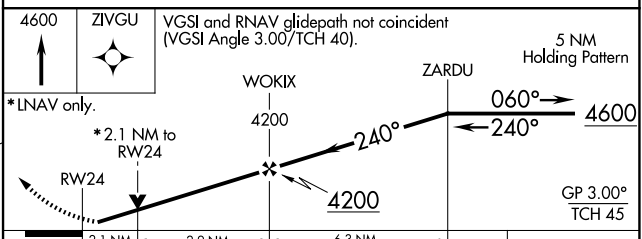
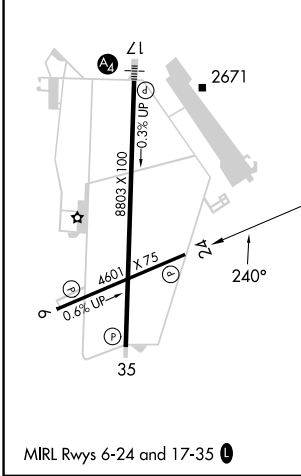
**⚠** For uncompensated Baro-VNAV systems, LNAV/VNAV NA below -20°C or above 54°C. When local altimeter setting not received, use Midland Intl Air and Space Port altimeter setting: increase all DA 130 feet and all MDA 140 feet; increase LPV and LNAV/VNAV Cats A/B visibility ½ SM, and LNAV Cat A visibility ¼ SM. Baro-VNAV and VDP NA with Midland Intl Air and Space Port altimeter setting. Rwy 24 helicopter visibility reduction below ¾ SM NA.

MISSED APPROACH: Climb to 4600 direct ZIVGU and hold.

AWOS-3PT <b>118.025</b>	FORT WORTH CENTER <b>133.7 350.2</b>	UNICOM <b>122.8 (CTAF)</b> <b>📻</b>
----------------------------	---	--



ELEV 2573	TDZE 2573
-----------	-----------



CATEGORY	A	B	C	D
LPV DA	2823-¾	250 (300-¾)		NA
LNAV/VNAV DA	3236-2¼	663 (700-2¼)		NA
LNAV MDA	3380-1 807 (900-1)	3380-1¼ 807 (900-1¼)		NA

SC-2, 11 JUN 2026 to 09 JUL 2026

SC-2, 11 JUN 2026 to 09 JUL 2026