

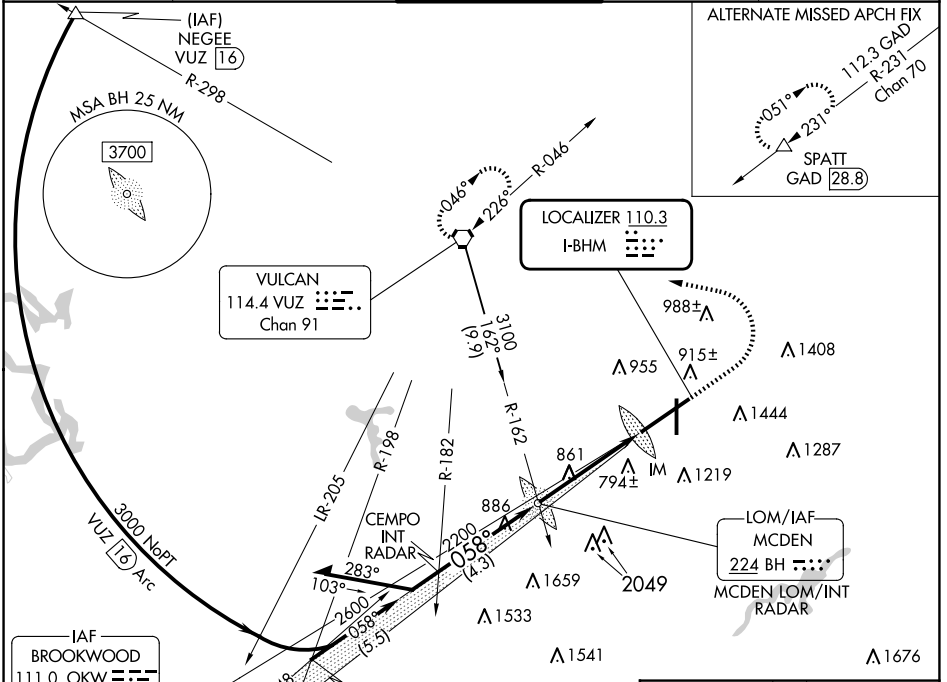
LOC I-BHM 110.3	APP CRS 058°	Rwy ldg 12007 TDZE 606 Apt Elev 650
---------------------------	------------------------	--

ILS RWY 6 (CAT II)

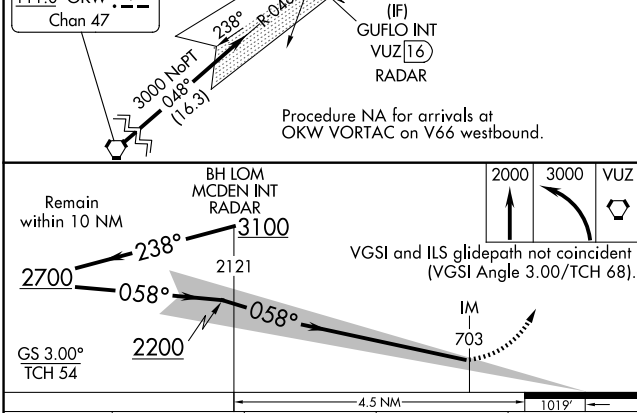
BIRMINGHAM-SHUTTLESWORTH INTL (BHM)

RNP APCH-GPS. From OKW VORTAC.	ALSF-2 	MISSED APPROACH: Climb to 2000 then climbing left turn to 3000 direct VUZ VORTAC and hold.
--------------------------------	------------	--

ATIS 119.4 270.1	BIRMINGHAM APP CON 123.8 256.8	BIRMINGHAM TOWER 119.9 317.725	GND CON 121.7 348.6	CLNC DEL 125.675 305.2
----------------------------	--	--	-------------------------------	----------------------------------



Procedure NA for arrivals at OKW VORTAC on V66 westbound.



CATEGORY	A	B	C	D
S-ILS 6	RA 118/12 100		DA 706	
CATEGORY II ILS - SPECIAL AIRCREW & AIRCRAFT CERTIFICATION REQUIRED				

ELEV 650	TDZE 606
REIL Rwy 18 and 36 TDZ/CL Rwy 6 HIRL Rwy 6-24 MIRL Rwy 18-36	

SE-4, 11 JUN 2026 to 09 JUL 2026

SE-4, 11 JUN 2026 to 09 JUL 2026