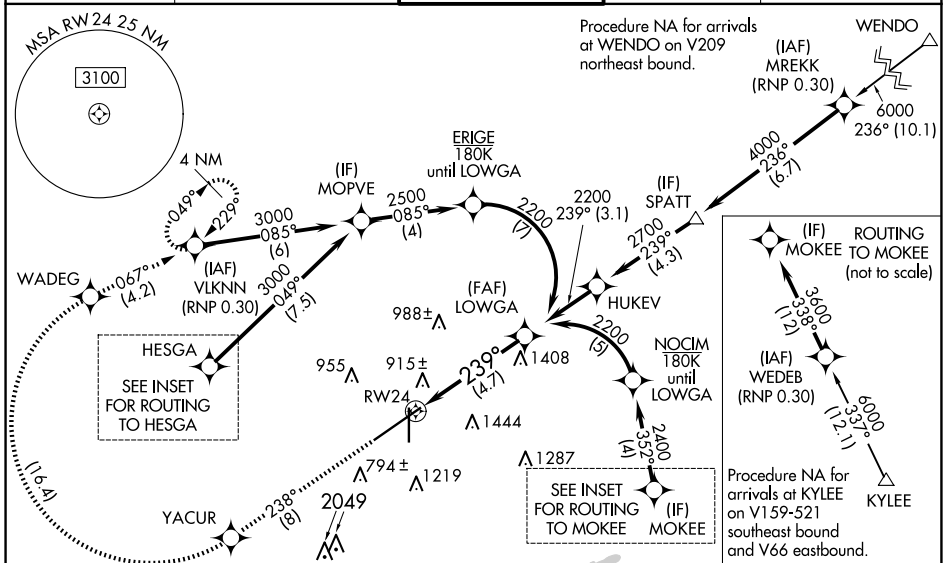


APP CRS <b>239°</b>	Rwy Idg <b>10801</b> TDZE <b>641</b> Apt Elev <b>650</b>
------------------------	--

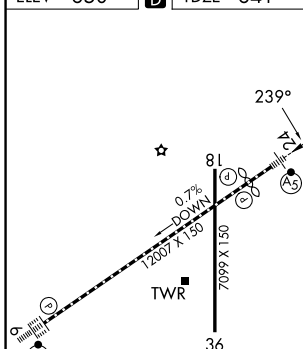
# RNAV (RNP) Z RWY 24

BIRMINGHAM-SHUTTLESWORTH INTL (BHM)

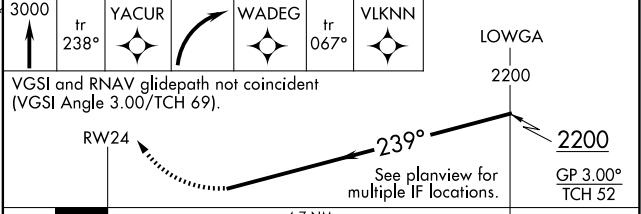
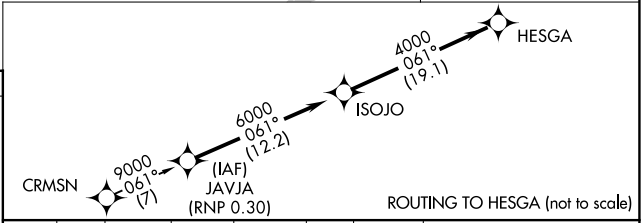
RNP AR APCH. RF required.		MALSR	MISSED APPROACH: Climb to 3000 on track 238° to YACUR then, right turn to WADEG, then on track 067° to VLKNN and hold.	
<p>▼ For uncompensated Baro-VNAV systems, procedure NA below -8°C or above 54°C. For inop ALS, increase RNP 0.15 all Cats visibility to 1 3/8 and increase RNP 0.30 all Cats visibility to 1 3/4 SM.</p>				
ATIS <b>119.4 270.1</b>	BIRMINGHAM APP CON <b>123.8 256.8</b>	BIRMINGHAM TOWER <b>119.9 317.725</b>	GND CON <b>121.7 348.6</b>	CLNC DEL <b>125.675 305.2</b>



ELEV 650	<b>D</b>	TDZE 641
----------	----------	----------



REIL Rws 18 and 36 TDZ/CL Rwy 6 HIRL Rwy 6-24 MIRL Rwy 18-36
---



CATEGORY	A	B	C	D
RNP 0.15 DA		1149-1	508 (500-1)	
RNP 0.30 DA		1243-1 3/8	602 (600-1 3/8)	

**AUTHORIZATION REQUIRED**

SE-4, 11 JUN 2026 to 09 JUL 2026

SE-4, 11 JUN 2026 to 09 JUL 2026