

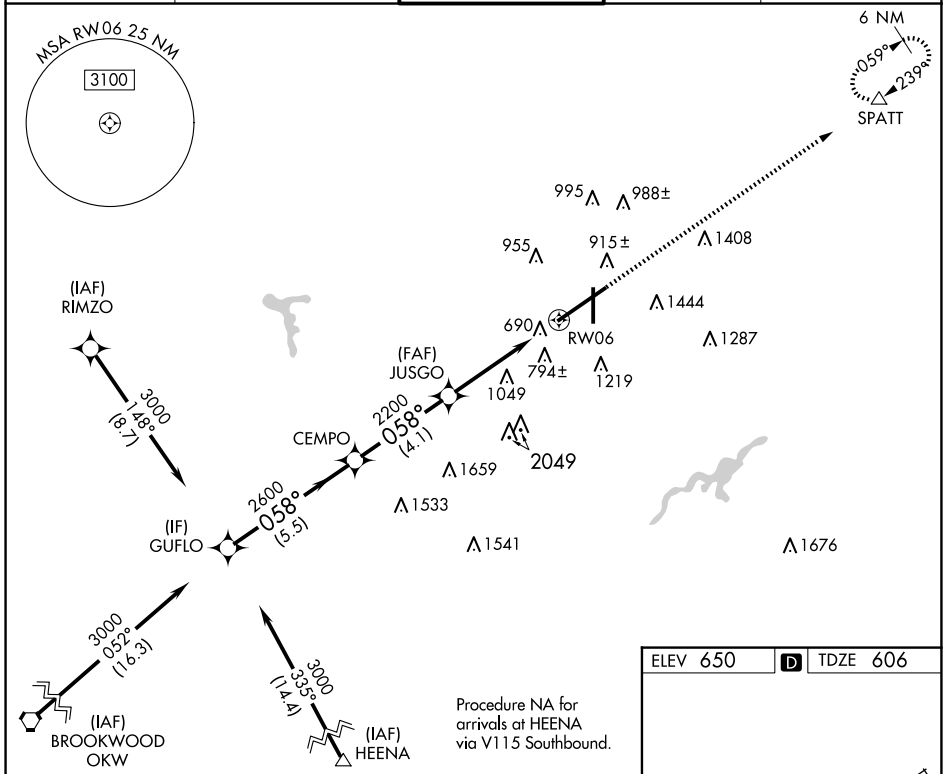
WAAS CH <b>82014</b> <b>W06A</b>	APP CRS <b>058°</b>	Rwy Idg <b>12007</b> TDZE <b>606</b> Apt Elev <b>650</b>
--	------------------------	--

# RNAV (GPS) Y RWY 6

BIRMINGHAM-SHUTTLESWORTH INTL (BHM)

RNP APCH.	ALSF-2	MISSED APPROACH: Climb to 3300 direct SPATT and hold.
<p>▼ For uncompensated Baro-VNAV systems, LNAV/VNAV NA below -16°C (4°F) or above 47°C (116°F).</p>		

ATIS <b>119.4 270.1</b>	BIRMINGHAM APP CON <b>123.8 256.8</b>	BIRMINGHAM TOWER <b>119.9 317.725</b>	GND CON <b>121.7 348.6</b>	CLNC DEL <b>125.675 305.2</b>
----------------------------	--	--	-------------------------------	----------------------------------



SE-4, 11 JUN 2026 to 09 JUL 2026

SE-4, 11 JUN 2026 to 09 JUL 2026

GUFLO		VGSi and RNAV glidepath not coincident (VGSi Angle 3.00/TCH 68).		3300	SPATT
Procedure Turn NA	3000	CEMPO	JUSGO	*LNAV only.	
GP 3.00° TCH 53	058°	2600	2200	* 2.4 NM to RW06	
	5.5 NM	4.1 NM	2.4 NM	2.4 NM	
CATEGORY	A	B	C	D	
LPV DA	806/18		200 (200-½)		
LNAV/VNAV DA	1120/60		514 (500-1¼)		
LNAV MDA	1440/24 834 (800-½)	1440/40 834 (800-¾)	1440-2 834 (800-2)	1440-2¼ 834 (800-2¼)	

TWR  
0.7% DOWN  
1200 X 150  
7099 X 150  
81  
36  
058°

REIL Rwy 18 and 36  
TDZ/CL Rwy 6  
HIRL Rwy 6-24  
MIRL Rwy 18-36