

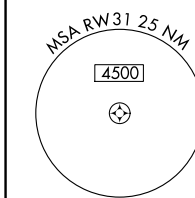
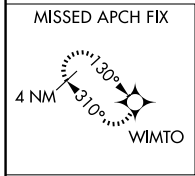
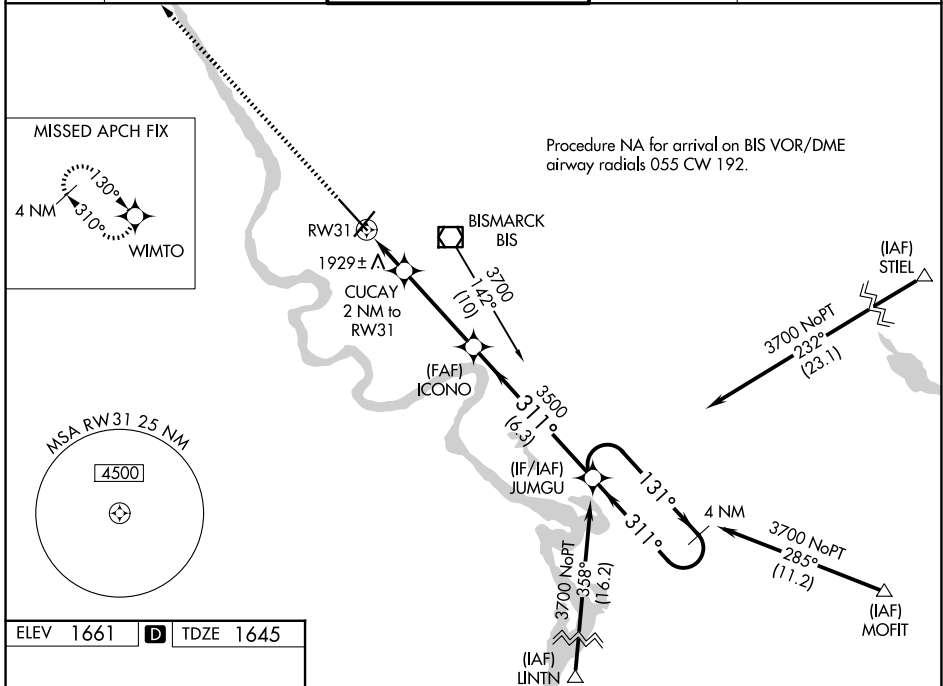
WAAS CH 56599 W31A	APP CRS 311°	Rwy Ldg TDZE Apt Elev	8794 1645 1661
--	------------------------	-----------------------------	---

RNAV (GPS) RWY 31

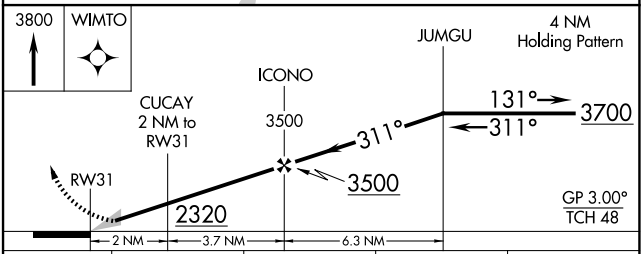
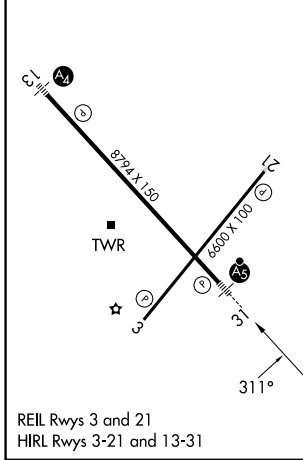
BISMARCK MUNI (BIS)

RNP APCH - GPS.		MALSR	MISSED APPROACH: Climb to 3800 direct WIMTO and hold.
<p>▼ For uncompensated Baro-VNAV systems, LNAV/VNAV NA below -18°C or above 54°C. Inop table does not apply to LNAV/VNAV.</p> <p>▲ ASR *RVR 1800 authorized with use of FD or AP or HUD to DA.</p>			

ATIS 119.35	BISMARCK APP CON* 126.3 298.9	BISMARCK TOWER* 118.3(CTAF) 0 257.8	GND CON 121.9	UNICOM 122.95
-----------------------	---	---	-------------------------	-------------------------



ELEV 1661	D	TDZE 1645
-----------	----------	-----------



CATEGORY	A	B	C	D
LPV DA*	1845/24		200 (200-½)	
LNAV/VNAV DA	2269-1¾		624 (700-1¾)	
LNAV MDA	2180/24 535 (600-½)		2180/55 535 (600-1)	
CIRCLING	2200-1 539 (600-1)		2460-2¼ 799 (800-2¼)	2460-2½ 799 (800-2½)

NC-1, 11 JUN 2026 to 09 JUL 2026

NC-1, 11 JUN 2026 to 09 JUL 2026