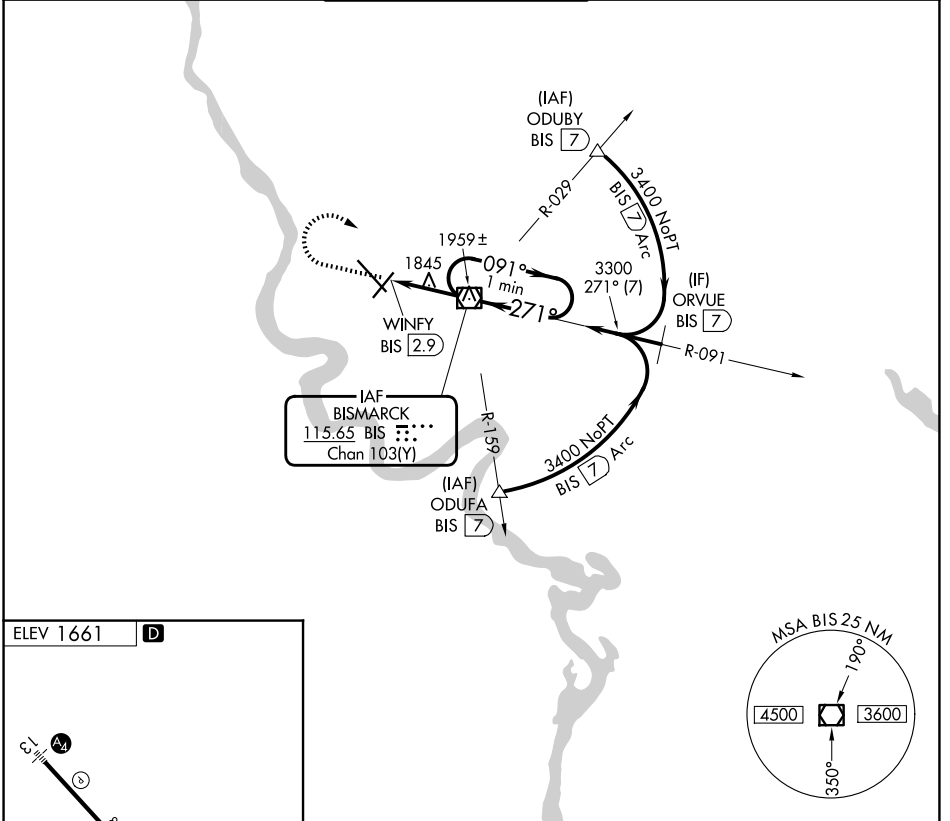


VOR/DME BIS <b>115.65</b> Chan <b>103(Y)</b>	APP CRS <b>271°</b>	Rwy Ldg TDZE Apt Elev <b>N/A</b> <b>N/A</b> <b>1661</b>
--	------------------------	--

**VOR-A**  
BISMARCK MUNI (BIS)

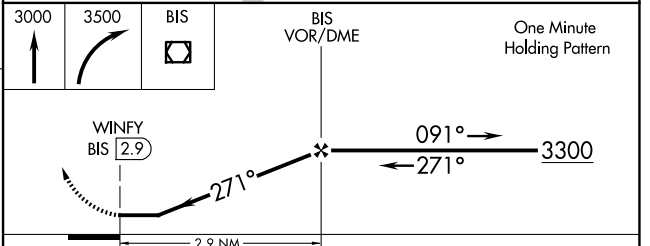
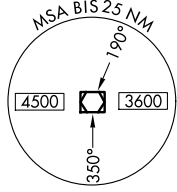
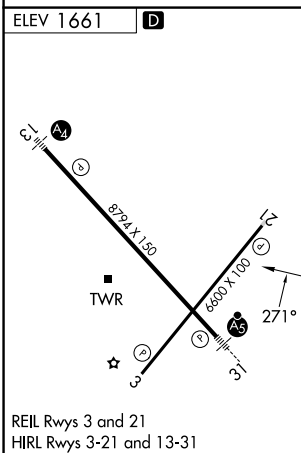
 <p>ASR</p>	<p>MISSED APPROACH: Climb to 3000 then climbing right turn to 3500 direct BIS VOR/DME and hold.</p>			
--	---	--	--	--

ATIS <b>119.35</b>	BISMARCK APP CON * <b>126.3 298.9</b>	BISMARCK TOWER * <b>118.3 (CTAF) 0 257.8</b>	GND CON <b>121.9</b>	UNICOM <b>122.95</b>
-----------------------	--	---	-------------------------	-------------------------



NC-1, 11 JUN 2026 to 09 JUL 2026

NC-1, 11 JUN 2026 to 09 JUL 2026



FAF to MAP 2.9 NM					
Knots	60	90	120	150	180
Min:Sec	2:54	1:56	1:27	1:10	0:58
CATEGORY	A	B	C	D	
CIRCLING	2200-1	539 (600-1)	2460-2¼ 799 (800-2¼)	2460-2½ 799 (800-2½)	