

BLZZR SIX DEPARTURE (RNAV)
(BLZZR6.BLZZR) 30NOV23

GENERAL EDWARD LAWRENCE LOGAN INTL (BOS)
BOSTON, MASSACHUSETTS

BOSTON DEP CON
133.0
D-ATIS
135.0
CLNC DEL
121.65 257.8
CPDLC
GND CON
121.75 121.9
BOSTON TOWER
128.8 257.8 (WEST)
132.225 257.8 (EAST)

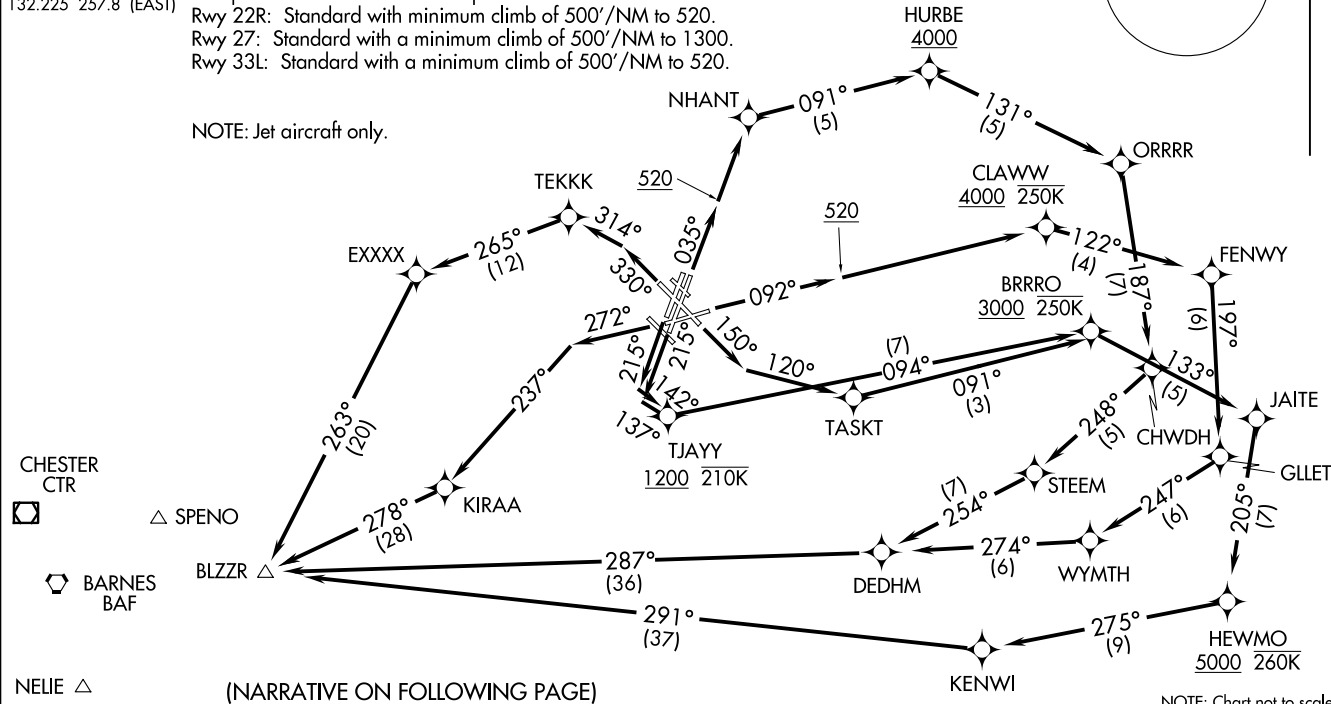
TAKEOFF MINIMUMS:

Rwy 4L, 14, 15L, 32, 33R: NA-ATC.
Rwy 4R: Standard with minimum climb of 500'/NM to 520.
Rwy 9: Standard with minimum climb of 500'/NM to 520.
Rwy 15R: Standard with minimum climb of 500'/NM to 520.
Rwy 22L: 300-1 with minimum climb of 500'/NM to 520, or standard with minimum climb of 500'/NM to 520 if tower reports no tall vessels in the departure area.
Rwy 22R: Standard with minimum climb of 500'/NM to 520.
Rwy 27: Standard with a minimum climb of 500'/NM to 1300.
Rwy 33L: Standard with a minimum climb of 500'/NM to 520.

NOTE: Jet aircraft only.

RNAV 1 - DME/DME/IRU or GPS.
RADAR required for non-GPS equipped aircraft.

TOP ALTITUDE:
5000



(NARRATIVE ON FOLLOWING PAGE)

NOTE: Chart not to scale.

BLZZR6.BLZZR) 23334
BLZZR SIX DEPARTURE (RNAV)

GENERAL EDWARD LAWRENCE LOGAN INTL (BOS)
AL-58 (FAA)
BOSTON, MASSACHUSETTS



DEPARTURE ROUTE DESCRIPTION

TAKEOFF RUNWAY 4R: Climb on heading 035° to 520, then direct NHANT, then on track 091° to cross HURBE at or above 4000, thence....

TAKEOFF RUNWAY 9: Climb on heading 092° to 520, direct to cross CLAWW at or above 4000 and at or below 250K, thence....

TAKEOFF RUNWAY 15R: Climb on heading 150° to intercept course 120° to TASKT, do not exceed 210K until 520' MSL, thence....

TAKEOFF RUNWAY 22L: Climb on heading 215° to intercept course 137° to TJAYY at or above 1200 and at or below 210K, thence....

TAKEOFF RUNWAY 22R: Climb on heading 215° to intercept course 142° to TJAYY at or above 1200 and at or below 210K, thence....

TAKEOFF RUNWAY 27: Climb on heading 272° to intercept course 237° to KIRAA, thence....

TAKEOFF RUNWAY 33L: Climb on heading 330° to intercept course 314° to TEKKK, thence....

...on depicted route to BLZZR. Maintain 5000. Expect clearance to filed altitude within ten minutes after departure.

NE-1, 11 JUN 2026 to 09 JUL 2026

NE-1, 11 JUN 2026 to 09 JUL 2026