

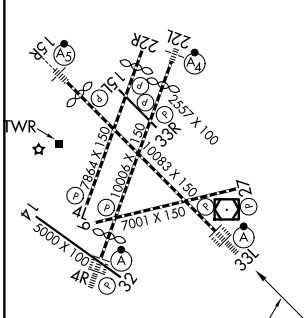
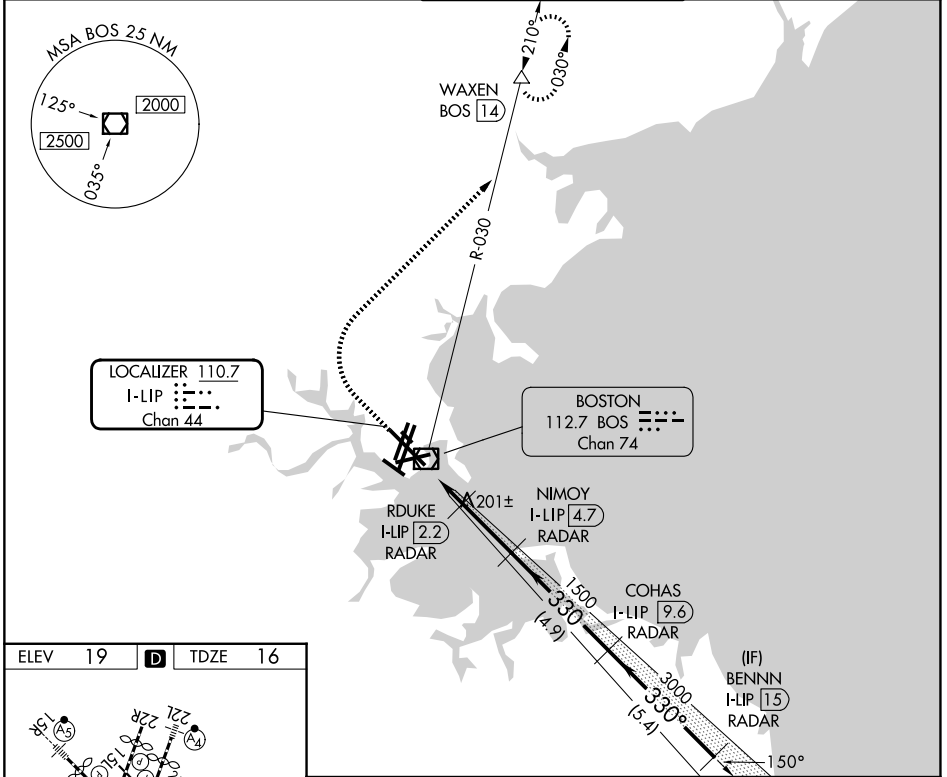
LOC/DME I-LIP <b>110.7</b> Chan <b>44</b>	APP CRS <b>330°</b>	Rwy Ldg <b>10083</b> TDZE <b>16</b> Apt Elev <b>19</b>
---	------------------------	--

# ILS or LOC RWY 33L

GENERAL EDWARD LAWRENCE LOGAN INTL (BOS)

RADAR required for procedure entry. DME required.		ALSF-2 	MISSED APPROACH: Climb to 1500 then climbing right turn to 3000 on BOS VOR/DME R-030 to WAXEN/BOS 14 DME and hold.
---	--	------------	--

D-ATIS <b>135.0</b>	BOSTON APP CON <b>120.6 263.1</b>	BOSTON TOWER <b>128.8 257.8 (WEST)</b> <b>132.225 257.8 (EAST)</b>	GND CON <b>121.75 121.9</b>
------------------------	--------------------------------------	--	--------------------------------



1500	3000	WAXEN △	VGSI and ILS glidepath not coincident (VGSI Angle 3.00/TCH 68).			
↑	↷	BOS R-030				
CATEGORY			A	B	C	D
S-ILS 33L			216/18 200 (200-½)			
S-LOC 33L			460/24 444 (500-½)		460/45 444 (500-¾)	

NE-1, 11 JUN 2026 to 09 JUL 2026

NE-1, 11 JUN 2026 to 09 JUL 2026