

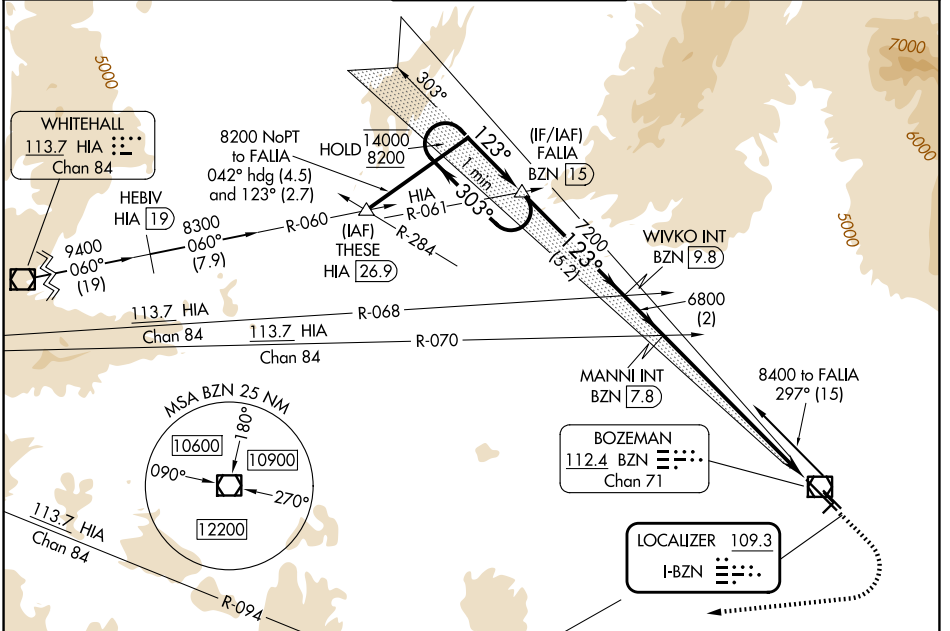
LOC I-BZN <b>109.3</b>	APP CRS <b>123°</b>	Rwy Ldg TDZE <b>8994 4443</b> Apt Elev <b>4473</b>
---------------------------	------------------------	---

# ILS Y RWY 12 (SA CAT II)

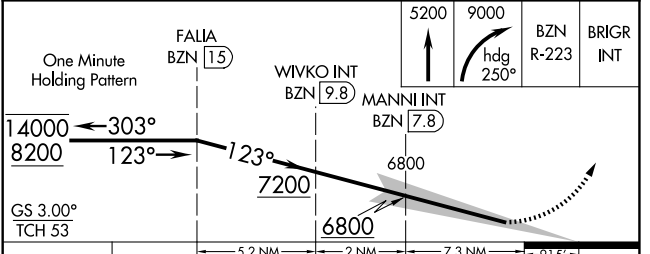
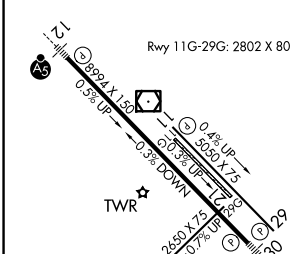
## BOZEMAN YELLOWSTONE INTL (BZN)

-21°C DME from BZN VOR/DME. DME use requires simultaneous reception of I-BZN and BZN DME. Requires specific OPSPEC, MSPEC, or LOA approval. Procedure NA when tower closed.	MALSR 	MISSED APPROACH: Climb to 5200 then climbing right turn to 9000 on heading 250° and on BZN VOR/DME R-223 to BRIGR INT/BZN VOR/DME 15 DME and hold, Continue climb-in-hold to 9000.
--	-----------	--

ATIS <b>135.425</b>	BIG SKY APP CON* <b>118.975 226.675</b>	BOZEMAN TOWER* <b>118.2 (CTAF) 0</b>	GND CON <b>121.8</b>	UNICOM <b>122.95</b>
------------------------	--	---	-------------------------	-------------------------



ELEV 4473		TDZE 4443
-----------	--	-----------



CATEGORY	A	B	C	D
S-ILS 12	RA 120/12 100 DA 4543			

**SA CATEGORY II ILS - SPECIAL AIRCREW & AIRCRAFT CERTIFICATION REQUIRED**

NW-1, 11 JUN 2026 to 09 JUL 2026

NW-1, 11 JUN 2026 to 09 JUL 2026