

LOC I-BZN 109.3	APP CRS 123°	Rwy Ldg TDZE Apt Elev	8994 4443 4473
---------------------------	------------------------	-----------------------------	---

ILS Z or LOC Z RWY 12

BOZEMAN YELLOWSTONE INTL (BZN)

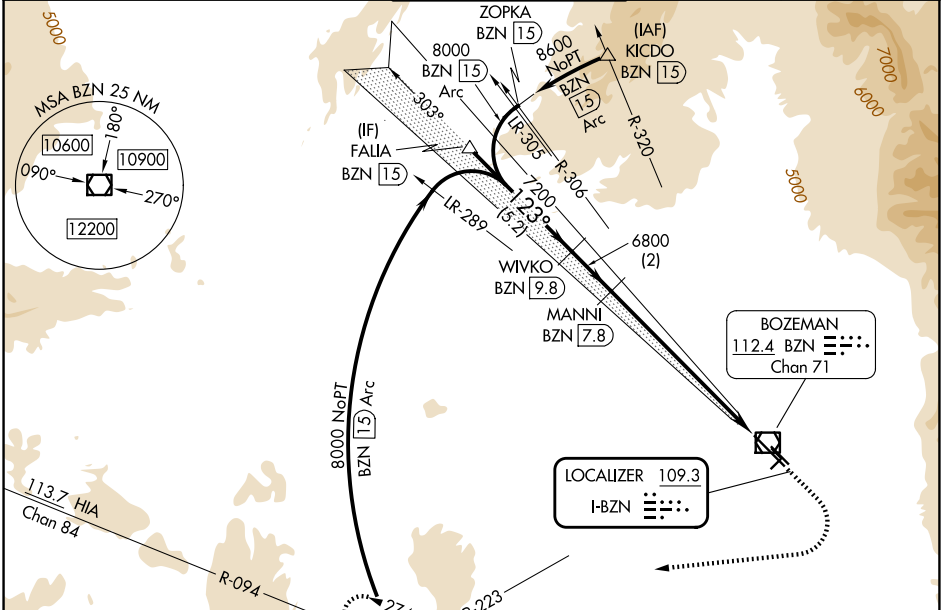
DME required. RADAR required for procedure entry at BRIGR.

⚠ Circling NA to Rwy 3-21 and 11-29. DME from BZN VOR/DME.
⚠ DME use requires simultaneous reception of I-BZN and BZN DME.
❄ -21°C For inop ALS, increase S-LOC Cat C/D visibility to 2 SM.
 *RVR 1800 authorized with use of FD or AP or HUD to DA.

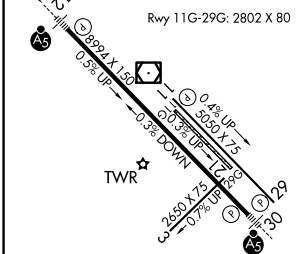
MALSR

MISSED APPROACH: Climb to 5200 then climbing right turn to 9000 on heading 250° on BZN VOR/DME R-223 to BRIGR/BZN 15 DME and hold, continue climb-in-hold to 9000.

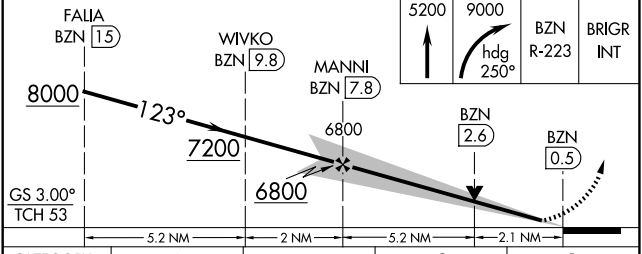
ATIS 135.425	BIG SKY APP CON* 118.975 226.675	BOZEMAN TOWER* 118.2 (CTAF) 0	GND CON 121.8	UNICOM 122.95
------------------------	--	---	-------------------------	-------------------------



ELEV 4473	D	TDZE 4443
-----------	----------	-----------



HIRL Rwy 12-30	MIRL Rwy 11-29				
FAF to MAP 7.3 NM					
Knots	60	90	120	150	180
Min:Sec	7:18	4:52	3:39	2:55	2:26



CATEGORY	A	B	C	D
S-ILS 12*	4643/24 200 (200-1/2)			
S-LOC 12	5160/24	717 (700-1/2)	5160-1 5/8	717 (700-1 5/8)
CIRCLING	5160-1	687 (700-1)	5160-2 687 (700-2)	5360-2 3/4 887 (900-2 3/4)

NW-1, 11 JUN 2026 to 09 JUL 2026

NW-1, 11 JUN 2026 to 09 JUL 2026