

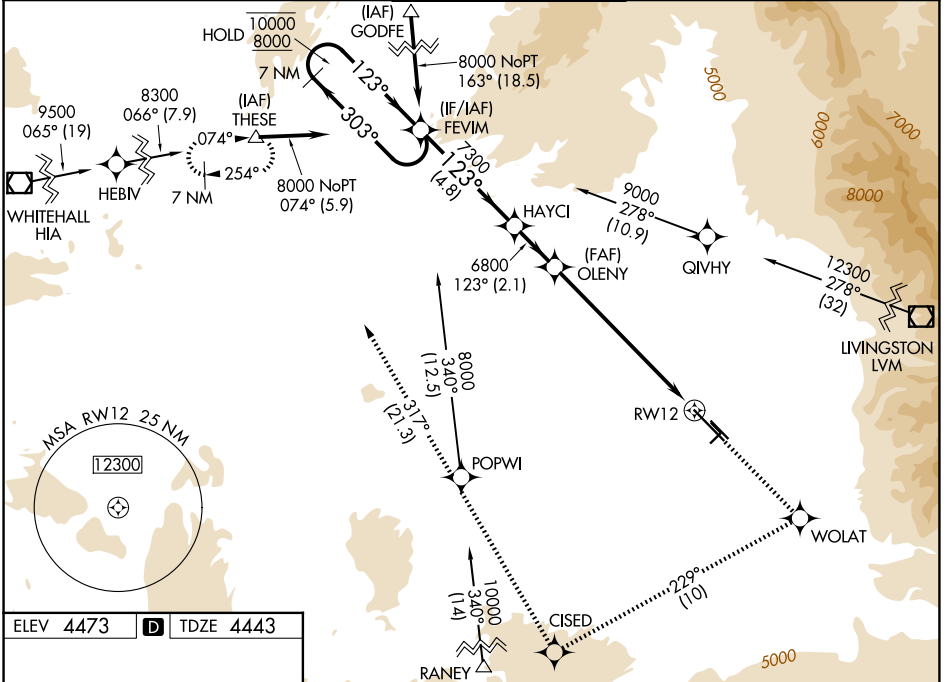
WAAS CH 72816 W12A	APP CRS 123°	Rwy Ldg TDZE Apt Elev	8994 4443 4473
----------------------------------------	------------------------	-----------------------------	-------------------------------------------

RNAV (GPS) Y RWY 12

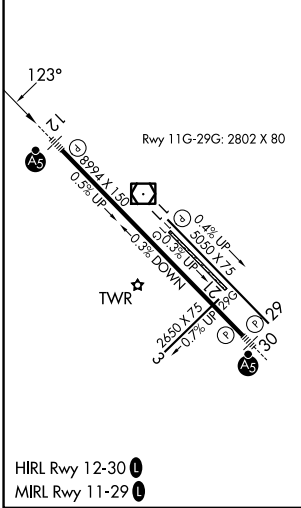
BOZEMAN YELLOWSTONE INTL (BZN)

RNP APCH.	MALSR	MISSED APPROACH: Climb to 8300 direct WOLAT and right turn on track 229° to CISED and on track 317° to THESE and hold.
<p>⚠ Circling NA to Rwys 3-21 and 11-29. For uncompensated Baro-VNAV systems, procedure NA below -23°C or above 49°C. For inop ALS, increase to -21°C LNAV/VNAV visibility to 1 1/8 SM and LNAV visibility Cats C and D to 1 1/8 SM.</p>		

ATIS 135.425	BIG SKY APP CON* 118.975 226.675	BOZEMAN TOWER* 118.2 (CTAF)	GND CON 121.8	UNICOM 122.95
------------------------	--------------------------------------------	---------------------------------------	-------------------------	-------------------------



ELEV 4473	D	TDZE 4443
-----------	----------	-----------



7 NM Holding Pattern		8300	WOLAT	CISED	THESE
10000 ← 303°		↑	↘ tr 229°	↘ tr 317°	△
8000 → 123°		* LNAV only			
GP 3.00°		HAYCI		OLENY	*1.5 NM to RWY 12
TCH 53		6800		6800	RWY 12
		4.8 NM		2.1 NM	5.7 NM
				1.5 NM	
CATEGORY	A	B	C	D	
LPV DA		4693-1/2	250 (300-1/2)		
LNAV/VNAV DA		5094-1 3/4	651 (700-1 3/4)		
LNAV MDA	4960-1/2	517 (500-1/2)	4960-1 517 (500-1)	4960-1 1/4 517 (500-1 1/4)	
CIRCLING	4960-1	487 (500-1)	5160-2 687 (700-2)	5360-3 887 (900-3)	

NW-1, 11 JUN 2026 to 09 JUL 2026

NW-1, 11 JUN 2026 to 09 JUL 2026