

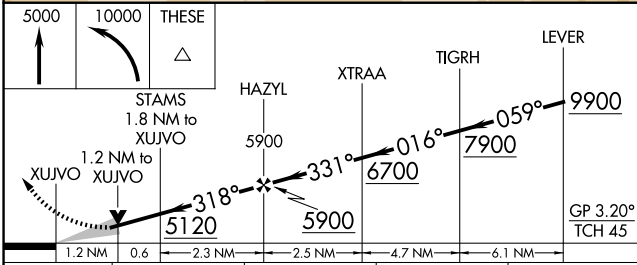
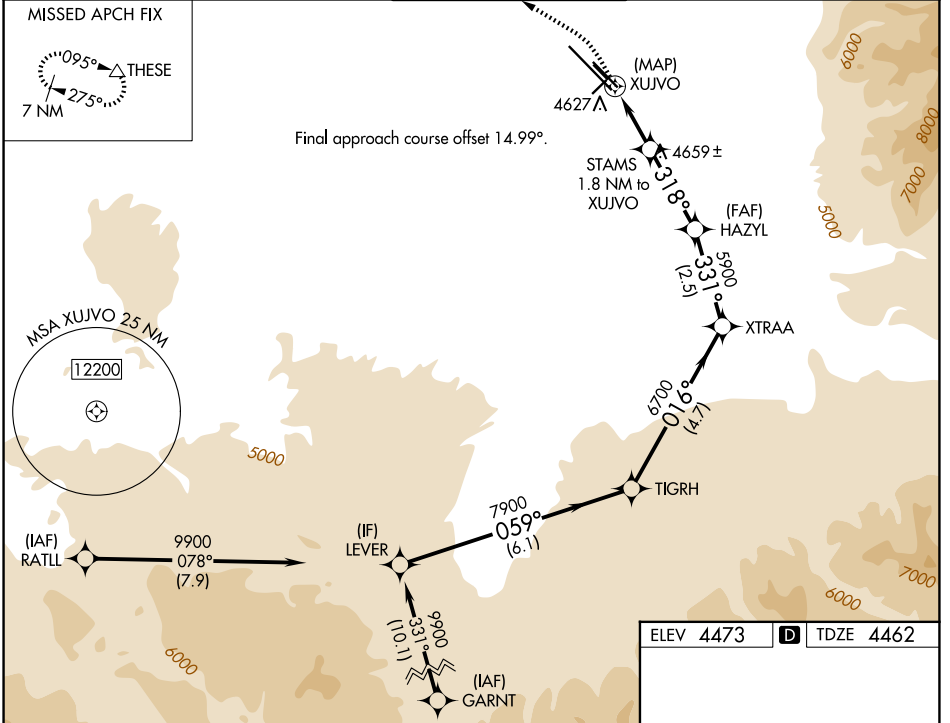
APP CRS 318°	Rwy Ldg TDZE Apt Elev	8994 4462 4473
------------------------	-----------------------------	---

RNAV (GPS) Y RWY 30

BOZEMAN YELLOWSTONE INTL (BZN)

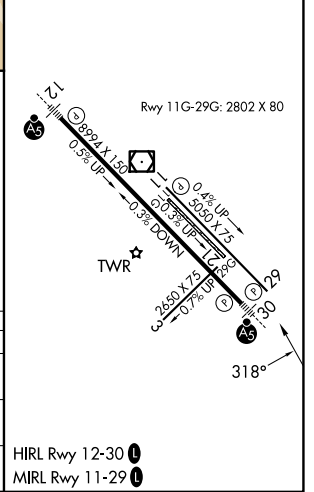
RNP APCH - GPS.	MALSR	MISSED APPROACH: Climb to 5000 then climbing left turn to 10000 direct THESE and hold, continue climb-in-hold to 10000.
<p>For uncompensated Baro-VNAV systems, LNAV/VNAV NA below -30°C or above 54°C. Circling NA to Rwy's 3, 11, 21 and 29.</p>		

ATIS 135.425	BIG SKY APP CON * 118.975 226.675	BOZEMAN TOWER * 118.2 (CTAF)	GND CON 121.8	UNICOM 122.95
------------------------	---	--	-------------------------	-------------------------



ELEV 4473		TDZE 4462
-----------	--	-----------

CATEGORY	A	B	C	D
LNAV/VNAV DA	4880-1½		418 (500-1½)	
LNAV MDA	4880-1	418 (500-1)	4880-1½	418 (500-1½)
CIRCLING	4940-1 467 (500-1)	4960-1 487 (500-1)	5160-2 687 (700-2)	5320-2¾ 847 (900-2¾)



NW-1, 11 JUN 2026 to 09 JUL 2026

NW-1, 11 JUN 2026 to 09 JUL 2026