

VAN NUYS THREE DEPARTURE
(VNY3.VNY) 26MAY16

VAN NUYS THREE DEPARTURE
(VNY3.VNY) 23334

AL-67 (FAAN)

BOB HOPE (BTR)
BURBANK, CALIFORNIA

**TOP ALTITUDE:
ASSIGNED BY ATC**

SOCAL DEP CON
124.6 298.85
CLNC DEL
118.0 348.6
CPDLC

EDWARDS
116.4 EDW
Chan 111

COREZ
4000
266°
(25)
R-086

AVENAL
117.1 AVE
Chan 118

GORMAN
116.1 GMN
Chan 108

LAKE HUGHES
114.35 LHS
Chan 90(Y)

PALMDALE
115.55 PMD
Chan 102(Y)

CASTA
8300

ETHER
9000
067°
(15)

DAGGETT
113.2 DAG
Chan 79

FILLMORE
112.5 FIM
Chan 72

VICTORVILLE
109.05 VCV
Chan 27(Y)

SLAPP
7000
038°
(8)

BOGET
7000
038°
(12)

LANGE
7000
046°
(9)

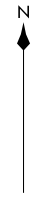
VAN NUYS
113.1 VNY
Chan 78

SUANA
3700

IPHO
5000
255°
(7)

VENTURA
116.55 VTU
Chan 112(Y)

LOS ANGELES
113.6 LAX
Chan 83



NOTE: RADAR required

TAKEOFF MINIMUMS

- Rwy 8: Standard with minimum climb of 410' per NM to 2500.
- Rwy 15: Standard with minimum climb of 335' per NM to 2300.
- Rwy 26: Standard with minimum climb of 305' per NM to 5000.
- Rwy 33: Standard with minimum climb of 550' per NM to 5000, or 600-2¼ with minimum climb of 300' per NM to 5000.

NOTE: Chart not to scale.

(CONTINUED ON FOLLOWING PAGE)

BURBANK, CALIFORNIA
BOB HOPE (BTR)



DEPARTURE ROUTE DESCRIPTION

TAKEOFF RUNWAY 8: Climbing right turn heading 213°

TAKEOFF RUNWAY 15: Climbing right turn heading 213°

TAKEOFF RUNWAY 26: Climbing right turn heading 293°

TAKEOFF RUNWAY 33: Climbing left turn heading 273°

. . . .expect RADAR vector to VNY VOR/DME. Thence via (transition) or (assigned route).

AVENAL TRANSITION (VNY3.AVE): From over VNY VOR/DME on VNY R-255 and LAX R-323 to TWINE, then on LAX R-323 and GMN R-142 to GMN VORTAC, then on GMN R-310 and AVE R-086 to AVE VOR/DME.

DAGGETT TRANSITION (VNY3.DAG): From over VNY VOR/DME on VNY R-255 and LAX R-323 to TWINE, then on VTU R-046 and PMD R-218 to PMD VORTAC, then on PMD R-067 and DAG R-238 to DAG VORTAC.

FILLMORE TRANSITION (VNY3.FIM): From over VNY VOR/DME on VNY R-255 and FIM R-120 to FIM VORTAC.

GORMAN TRANSITION (VNY3.GMN): From over VNY VOR/DME on VNY R-255 and LAX R-323 to TWINE, then on LAX R-323 and GMN R-142 to GMN VORTAC.

PALMDALE TRANSITION (VNY3.PMD): From over VNY VOR/DME on VNY R-255 and LAX R-323 to TWINE, then on VTU R-046 and PMD R-218 to PMD VORTAC.

TWINE TRANSITION (VNY3.TWINE): From over VNY VOR/DME on VNY R-255 and LAX R-323 to TWINE.

SW-3, 11 JUN 2026 to 09 JUL 2026

SW-3, 11 JUN 2026 to 09 JUL 2026