

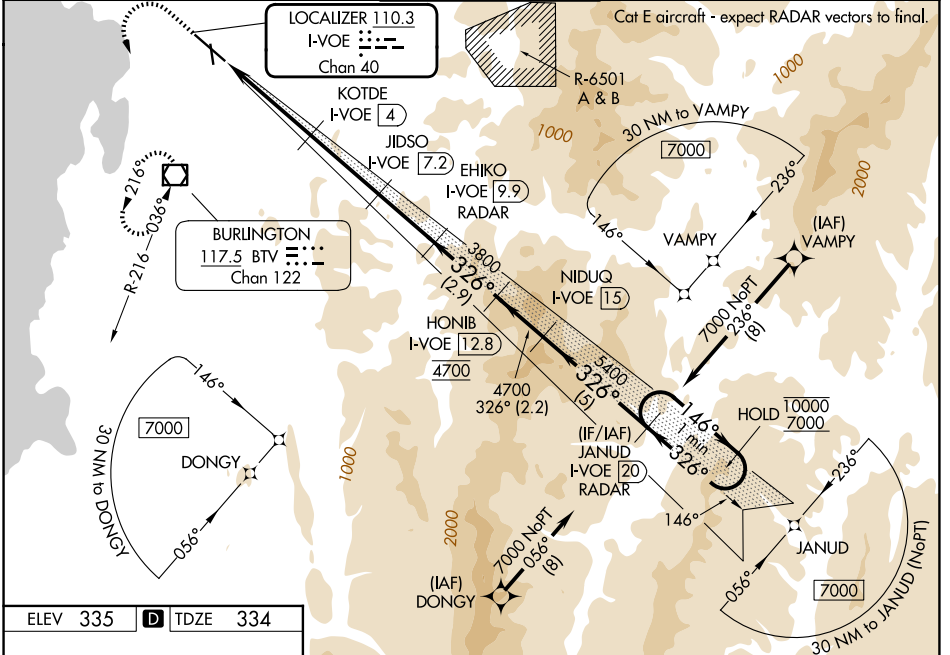
LOC/DME I-VOE <b>110.3</b> Chan <b>40</b>	APP CRS <b>326°</b>	Rwy Ldg <b>7819</b> TDZE <b>334</b> Apt Elev <b>335</b>
---	------------------------	---

# ILS or LOC RWY 33

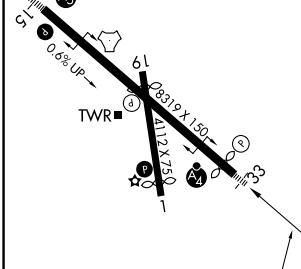
PATRICK LEAHY BURLINGTON INTL (BTV)

RNP APCH - GPS. From DONGY or VAMPY.		MALSIF	MISSED APPROACH: Climb to 1400 then climbing left turn to 3100 direct BTV VOR/DME and hold, continue climb-in-hold to 3100.
RADAR and DME required for non-GPS equipped aircraft.			
<p><b>▼</b> Rwy 33 helicopter visibility reduction below RVR 4000 NA.  <b>▲</b> For inop ALS, increase S-ILS-33 all Cats visibility to RVR 4500.  <b>❄</b> -9°C Inop table does not apply to S-LOC-33 Cats C, D and E.</p>			

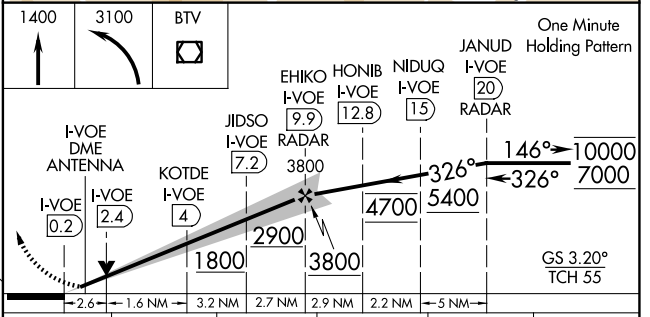
ATIS <b>123.8 269.9</b>	BURLINGTON APP CON * <b>121.1 278.8</b>	BURLINGTON TOWER * <b>118.3 (CTAF) 257.8</b>	GND CON <b>126.3 348.6</b>	UNICOM <b>122.95</b>
----------------------------	--	---	-------------------------------	-------------------------



ELEV 335	<b>D</b>	TDZE 334
----------	----------	----------



MIRL Rwy 1-19 <b>0</b>	
HIRL Rwy 15-33 <b>0</b>	
FAF to MAP 10 NM	
Knots	60 90 120 150 180
Min:Sec	10:00 6:40 5:00 4:00 3:20



CATEGORY	A	B	C	D	E
S-ILS 33	608/40		274 (300-¾)		
S-LOC 33	1260/55	926 (1000-1)	1260-2½	926 (1000-2½)	
CIRCLING	1260-1¼	925 (1000-1¼)	1260-2¾ 925 (1000-2¾)	1380-3 1045 (1100-3)	1400-3 1065 (1100-3)

NE-1, 11 JUN 2026 to 09 JUL 2026

NE-1, 11 JUN 2026 to 09 JUL 2026