

VOR/DME DDDY <b>116.2</b> Chan <b>109</b>	APP CRS <b>203°</b>	Rwy Ldg <b>10165</b> TDZE <b>5330</b> Apt Elev <b>5344</b>
---	------------------------	--

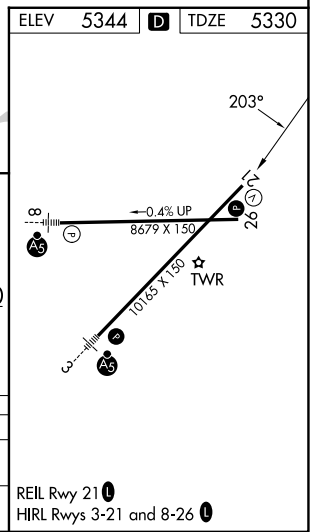
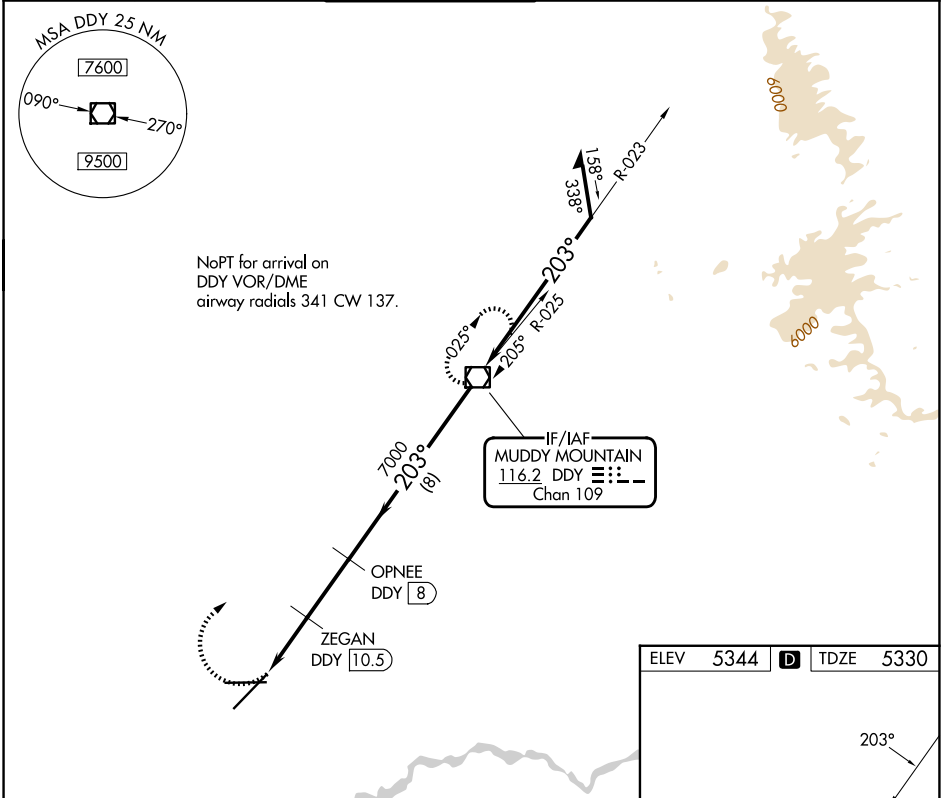
# VOR/DME RWY 21

CASPER/NATRONA COUNTY INTL (C'PR)

**▼** VDP NA with Douglas altimeter setting. When local altimeter setting not received, use Douglas altimeter setting and increase all MDAs 180 feet, increase S-21 visibility Cats C/D ½ SM, Circling Cat C ½ SM and Cat D ¼ SM.

**▲** MISSED APPROACH: Climbing right turn to 7600 direct DDDY VOR/DME and hold.

ATIS <b>126.15</b>	CASPER APP CON * <b>120.65 354.1</b>	CASPER TOWER * <b>118.3 (CTAF) 0 257.8</b>	GND CON <b>121.9</b>	CLNC DEL <b>121.9 257.8</b>	UNICOM <b>122.95</b>
-----------------------	---	---	-------------------------	--------------------------------	-------------------------



7600 DDDY	OPNEE DDDY (8)	DDY VOR/DME	Remain within 10 NM
DDY (12.1)	ZEGAN DDDY (10.5)	7800	
DDY (13.1)	3.00° TCH 56	7000	
0.9	1.6 NM	2.6 NM	8 NM
CATEGORY	A	B	C D
S-21	5680-1 350 (400-1)		
CIRCLING	5740-1 396 (400-1)	5800-1 456 (500-1)	5860-1½ 516 (600-1½) 6200-2¾ 856 (900-2¾)

NW-1, 11 JUN 2026 to 09 JUL 2026

NW-1, 11 JUN 2026 to 09 JUL 2026