

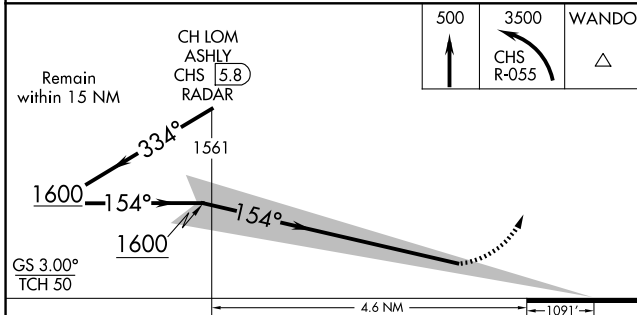
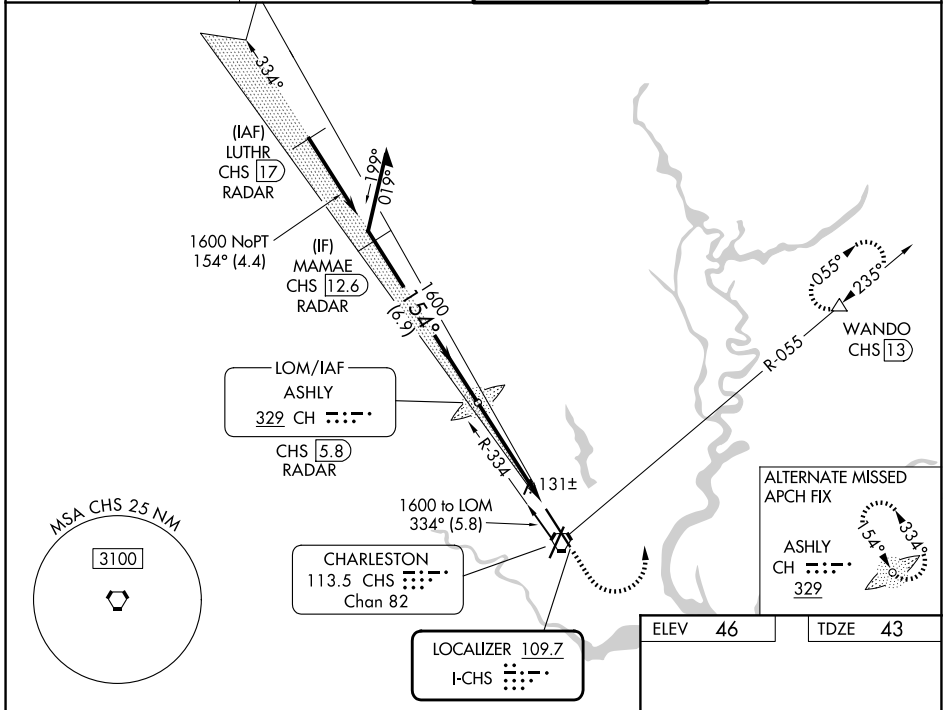
LOC I-CHS <b>109.7</b>	APP CRS <b>154°</b>	Rwy Ldg TDZE Apt Elev	<b>9001</b> <b>43</b> <b>46</b>
---------------------------	------------------------	-----------------------------	---------------------------------------

# ILS RWY 15 (SA CAT I)

CHARLESTON AFB/INTL (CHS)

DME required. Requires specific OPSPEC, MSPEC, or LOA approval and use of HUD to DH. DME from CHS VORTAC. Simultaneous reception of I-CHS and CHS DME required.	ALS-2 	MISSED APPROACH: Climb to 500 then climbing left turn to 3500 on CHS VORTAC R-055 to WANDO/CHS VORTAC 13 DME and hold, continue climb-in-hold to 3500.
--	-----------	--

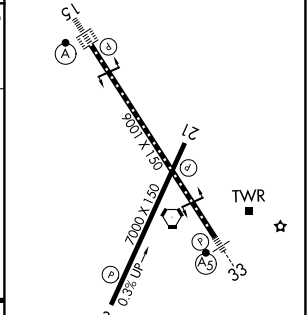
D-ATIS <b>124.75</b>	CHARLESTON APP CON <b>120.7 306.925</b>	CHARLESTON TOWER <b>126.0 239.0</b>	GND CON <b>121.9 348.6</b>
-------------------------	--	--	-------------------------------



CATEGORY	A	B	C	D
S-ILS 15		RA 151/14	150 DA 193	

**SA CATEGORY I ILS - SPECIAL AIRCREW & AIRCRAFT CERTIFICATION REQUIRED**

ELEV 46	TDZE 43
---------	---------



TDZL/RCLS Rwy 15  
REIL Rwy 3 and 21  
HIRL Rwy 3-21 and 15-33

SE-2, 11 JUN 2026 to 09 JUL 2026

SE-2, 11 JUN 2026 to 09 JUL 2026