

# PLMTO THREE DEPARTURE (RNAV)

**TOP ALTITUDE:**  
4000

NOTE: Chart not to scale.

## DEPARTURE ROUTE DESCRIPTION

**TAKEOFF RUNWAY 3:** Climb on heading 031° to 560, then right turn direct LOIRN, then on depicted route to PLMTO, thence. . . .

**TAKEOFF RUNWAY 15:** Climb on heading 154° to 560, then left turn direct JAYLN, then on depicted route to PLMTO, thence. . . .

**TAKEOFF RUNWAY 21:** Climb on heading 211° to 560, then left turn direct JAYLN, then on depicted route to PLMTO, thence. . . .

**TAKEOFF RUNWAY 33:** Climb on heading 334° to 560, then right turn direct LOIRN, then on depicted route to PLMTO, thence. . . .

. . . on assigned transition/route. Maintain 4000. Expect clearance to filed altitude within ten minutes after departure.

**GRAND STRAND TRANSITION (PLMTO3.CRE):**

SE-2, 11 JUN 2026 to 09 JUL 2026

- D-ATIS 124.75
- CINC DEL 127.325 291.65
- CPDLC
- GND CON 121.9 348.6
- CHARLESTON TOWER 126.0 239.0
- CHARLESTON DEP CON 121.275 379.925

- NOTE: If unable to accept climb rate, advise ATC on initial contact.
- NOTE: RNAV 1.
- NOTE: DME/DME/IRU or GPS required.
- NOTE: RADAR required for non-GPS equipped aircraft.

GRAND STRAND CRE

5000  
12100  
048°  
(49)

PLMTO



121°  
(12)

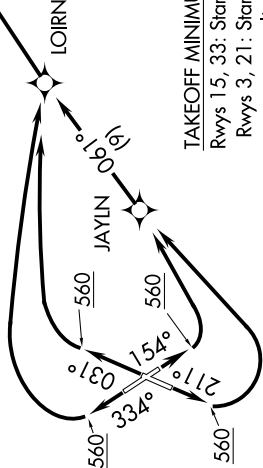
LOIRN

JAYLN

560

560

**TAKEOFF MINIMUMS**  
Rwys 15, 33: Standard.  
Rwys 3, 21: Standard with minimum climb of 500' per NM to 560.



# PLMTO THREE DEPARTURE (RNAV)

SE-2, 11 JUN 2026 to 09 JUL 2026