

STUNO ONE DEPARTURE (RNAV)

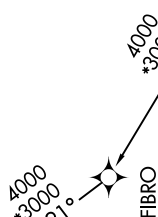
SE-2, 11 JUN 2026 to 09 JUL 2026

TOP ALTITUDE:
4000

D-ATIS 124.75
CLNC DEL 127.325 291.65
CPDC
GND CON 121.9 348.6
CHARLESTON TOWER 126.0 239.0
CHARLESTON DEP CON 120.7 306.925

TAKEOFF MINIMUMS:
Rwys 15, 33: Standard.
Rwys 3, 21: Standard with minimum climb of 500' per NM to 560.

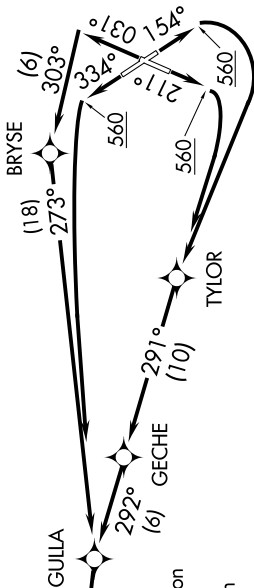
COLLIERS
IRQ



DEPARTURE ROUTE DESCRIPTION

TAKEOFF RUNWAY 3: Climb on heading 031° to intercept course 303° to BRYSE, then on depicted route to STUNO, thence
TAKEOFF RUNWAY 15: Climb on heading 154° to 560, then right turn direct TYLOR, then on depicted route to STUNO, thence
TAKEOFF RUNWAY 21: Climb on heading 211° to 560, then right turn direct TYLOR, then on depicted route to STUNO, thence
TAKEOFF RUNWAY 33: Climb on heading 334° to 560, then left turn direct GULLA, then on depicted route to STUNO, thence
. on assigned transition. Maintain 4000 expect ATC clearance to filed altitude/flight level within ten (10) minutes after departure.

ALLENDALE TRANSITION (STUNO1.ALD)
COLLIERS TRANSITION (STUNO1.IRQ)
DUBLIN TRANSITION (STUNO1.DBN)



NOTE: Transponder code will be issued by Charleston clearance delivery.
NOTE: If unable to accept climb rate, advise ATC on initial contact.
NOTE: DME/DME/IRU or GPS required.
NOTE: RNAV 1.
NOTE: RADAR required for non-GPS equipped aircraft.

NOTE: Chart not to scale.

STUNO ONE DEPARTURE (RNAV)

SE-2, 11 JUN 2026 to 09 JUL 2026