

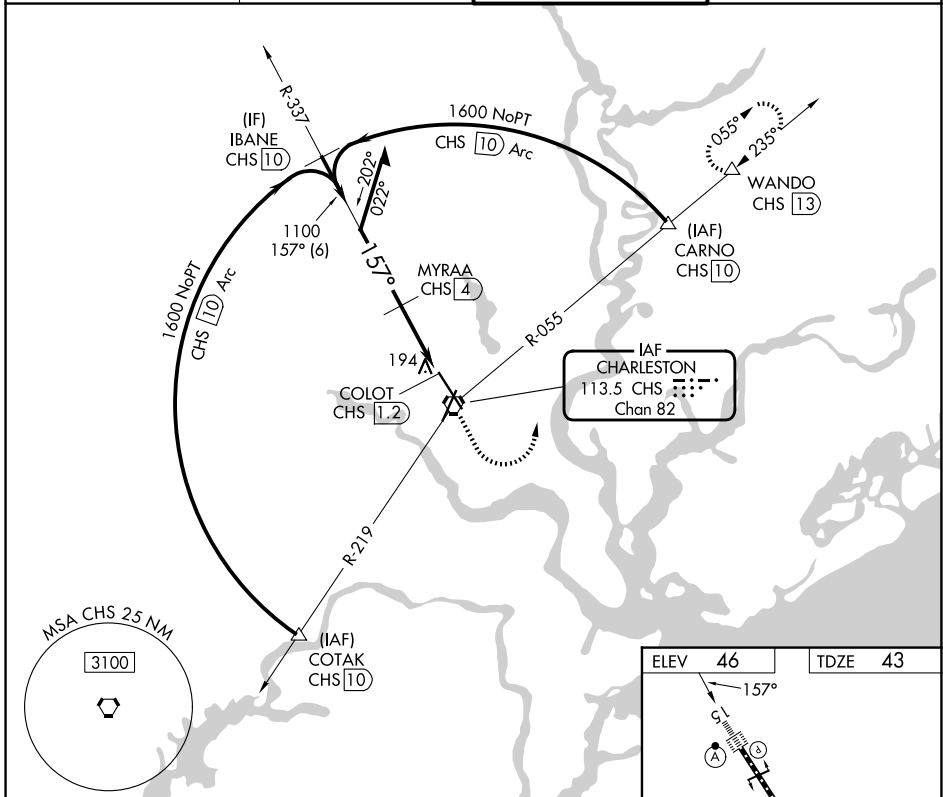
VORTAC CHS <b>113.5</b> Chan <b>82</b>	APP CRS <b>157°</b>	Rwy Ldg TDZE <b>43</b> Apt Elev <b>46</b>
--	------------------------	---

# VOR Y or TACAN Y RWY 15

CHARLESTON AFB/INTL (CHS)

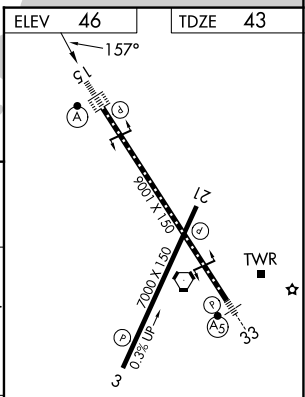
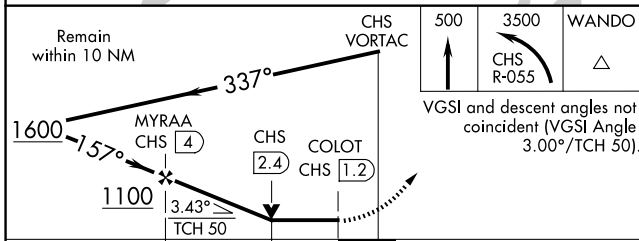
DME required.	ALSF-2	MISSED APPROACH: Climb to 500 then climbing left turn to 3500 on CHS VORTAC R-055 to WANDO/CHS 13 DME and hold, continue climb-in-hold to 3500.
<p>For inop ALS, increase S-15 Cat A/B visibility to RVR 5500 and Cat C/D visibility to RVR 6000.</p>		

D-ATIS <b>124.75</b>	CHARLESTON APP CON <b>120.7 306.925</b>	CHARLESTON TOWER <b>126.0 239.0</b>	GND CON <b>121.9 348.6</b>
-------------------------	--	--	-------------------------------



SE-2, 11 JUN 2026 to 09 JUL 2026

SE-2, 11 JUN 2026 to 09 JUL 2026



CATEGORY	A	B	C	D
S-15	460/24	417 (500-½)	460/40	417 (500-¾)
CIRCLING	540-1	494 (500-1)	540-1½ 494 (500-1½)	740-2¼ 694 (700-2¼)

TDZL/RCLS Rwy 15  
REIL Rwy 3 and 21  
HIRL Rwy 3-21 and 15-33