

RNAV 1 - DME/DME/IRU or GPS.  
RADAR required.

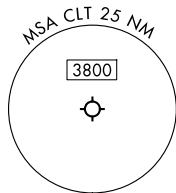
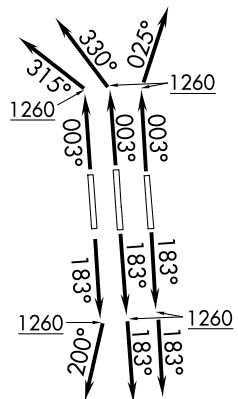
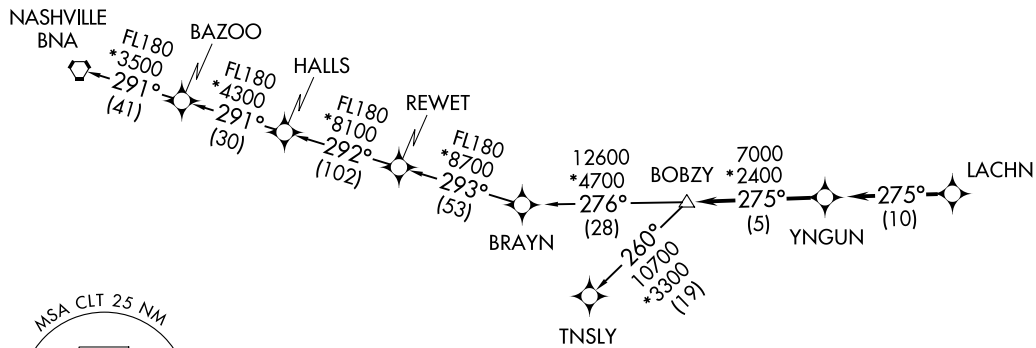
**TOP ALTITUDE:  
8000**

- NOTE: Turbojet only.
- NOTE: If unable to accept climb rates, advise ATC on initial contact.
- NOTE: Transponder code will be issued via PDC or Charlotte CLNC DEL.
- NOTE: Accelerate to 250K, if unable advise ATC. Upon reaching 10000 MSL, accelerate to and maintain 280K, if unable advise ATC.



TAKEOFF MINIMUMS

Rwys 18L/C, 19R, 36C/R: Standard with minimum climb of 500'/NM to 1260.  
Rwy 1L: Standard with minimum climb of 500'/NM to 1400.



(CONTINUED ON FOLLOWING PAGE)

NOTE: Chart not to scale.

BOBZY SIX DEPARTURE (RNAV)  
(BOBZY6.BOBZY) 14MAY26

CHARLOTTE, NORTH CAROLINA  
CHARLOTTE/DOUGLAS INTL (CLT)

(BOBZY6.BOBZY) 26134  
BOBZY SIX DEPARTURE (RNAV)

AL-78 (FAA)  
CHARLOTTE/DOUGLAS INTL (CLT)  
CHARLOTTE, NORTH CAROLINA

# BOBZY SIX DEPARTURE (RNAV)



## DEPARTURE ROUTE DESCRIPTION SEE ADDITIONAL REQUIREMENTS ON AAUP

- TAKEOFF RUNWAY 1L: Climb on heading 003° to 1260, then on heading 315° or as assigned by ATC for RADAR vectors to LACHN, thence. . .
- TAKEOFF RUNWAYS 18L/C: Climb on heading 183° to 1260, then on heading 183° or as assigned by ATC for RADAR vectors to LACHN, thence. . .
- TAKEOFF RUNWAY 19R: Climb on heading 183° to 1260, then on heading 200° or as assigned by ATC for RADAR vectors to LACHN, thence. . .
- TAKEOFF RUNWAY 36C: Climb on heading 003° to 1260, then on heading 330° or as assigned by ATC for RADAR vectors to LACHN, thence. . .
- TAKEOFF RUNWAY 36R: Climb on heading 003° to 1260, then on heading 025° or as assigned by ATC for RADAR vectors to LACHN, thence. . .

. . . on depicted route to BOBZY, then on assigned transition. Maintain 8000. Expect filed altitude 10 minutes after departure.

- NASHVILLE TRANSITION (BOBZY6.BNA)
- TNSLY TRANSITION (BOBZY6.TNSLY)

SE-2, 11 JUN 2026 to 09 JUL 2026

SE-2, 11 JUN 2026 to 09 JUL 2026