

(KILNS6; KILNS) 14MAY26
KILNS SIX DEPARTURE (RNAV)

CHARLOTTE, NORTH CAROLINA
 CHARLOTTE/DOUGLAS INTL (CLT)

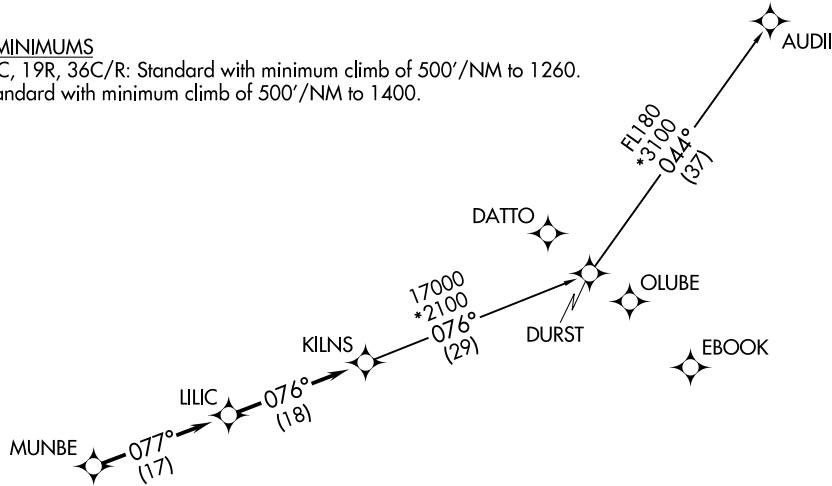
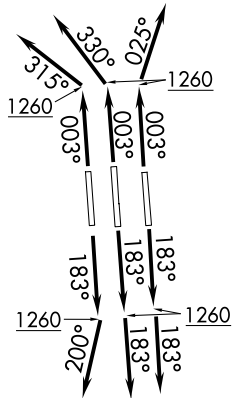
CHARLOTTE DEP CON
 124.0 307.8
 D-ATIS DEP 132.1
 CLNC DEL
 127.15 348.6
 CPDLC
 GND CON
 121.8 348.6 (W)
 121.9 348.6 (E)
 CHARLOTTE TOWER
 118.1 257.8 (18L-36R)
 126.4 257.8 (18C-36C)
 133.35 257.8 (1L-19R)

RNAV 1 - DME/DME/IRU or GPS. RADAR required.

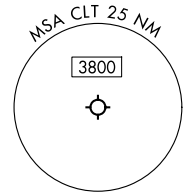
TOP ALTITUDE: 8000

TAKEOFF MINIMUMS

Rwy 18L/C, 19R, 36C/R: Standard with minimum climb of 500'/NM to 1260.
 Rwy 1L: Standard with minimum climb of 500'/NM to 1400.



- NOTE: Turbojet only.
- NOTE: If unable to accept climb rates, advise ATC on initial contact.
- NOTE: Transponder code will be issued via PDC or CLT CLNC DEL.
- NOTE: Accelerate to 250K, if unable advise ATC. Upon reaching 10000 MSL, accelerate to and maintain 280K, if unable advise ATC.



(CONTINUED ON FOLLOWING PAGE)

(KILNS6; KILNS) 26134
KILNS SIX DEPARTURE (RNAV)

AL-78 (FAA)
 CHARLOTTE/DOUGLAS INTL (CLT)
 CHARLOTTE, NORTH CAROLINA

KILNS SIX DEPARTURE (RNAV)



DEPARTURE ROUTE DESCRIPTION SEE ADDITIONAL REQUIREMENTS ON AAUP

TAKEOFF RUNWAY 1L: Climb on heading 003° to 1260, then on heading 315° or as assigned by ATC for RADAR vectors to MUNBE, thence. . .

TAKEOFF RUNWAYS 18L/C: Climb on heading 183° to 1260, then on heading 183° or as assigned by ATC for RADAR vectors to MUNBE, thence. . .

TAKEOFF RUNWAY 19R: Climb on heading 183° to 1260, then on heading 200° or as assigned by ATC for RADAR vectors to MUNBE, thence. . .

TAKEOFF RUNWAY 36C: Climb on heading 003° to 1260, then on heading 330° or as assigned by ATC for RADAR vectors to MUNBE, thence. . .

TAKEOFF RUNWAY 36R: Climb on heading 003° to 1260, then on heading 025° or as assigned by ATC for RADAR vectors to MUNBE, thence. . .

. . . on depicted route to KILNS, then on AUDII Transition. Maintain 8000. Expect filed altitude 10 minutes after departure.

AUDII TRANSITION (KILNS6.AUDII)

SE-2, 11 JUN 2026 to 09 JUL 2026

SE-2, 11 JUN 2026 to 09 JUL 2026