

# RNAV (GPS) RWY 3

CINCINNATI MUNI/LUNKEN FLD (LUK)

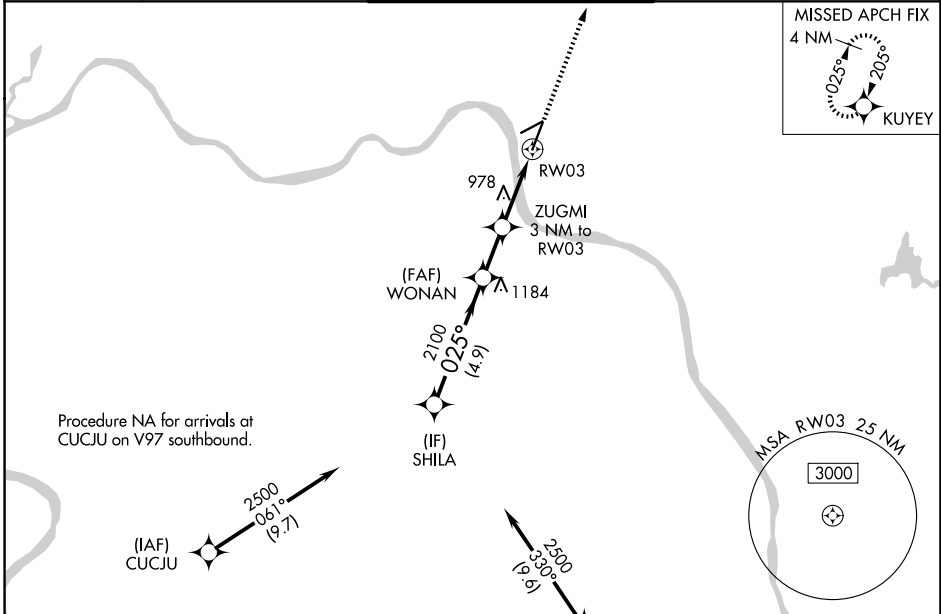
APP CRS	Rwy Ldg TDZE	<b>6101</b>
<b>025°</b>	Apt Elev	<b>481</b>
		<b>482</b>

RNP APCH-GPS.

**▽**  
**▲** Rwy 3 helicopter visibility reduction below 3/4 SM NA.  
Circling NA for Cat D north of Rwy 7-25. Circling Rwy 7 NA at night.

MISSED APPROACH: Climb to 2600 direct KUYEY and hold.

ATIS <b>123.6</b>	CINCINNATI APP CON <b>121.0 254.25</b>	LUNKEN TOWER ★ <b>118.7 (CTAF) 257.8</b>	GND CON <b>121.9</b>	UNICOM <b>122.95</b>
----------------------	---	---	-------------------------	-------------------------



Procedure NA for arrivals at CUCJU on V97 southbound.

(IAF) CUCJU 2500 061° (9.7)

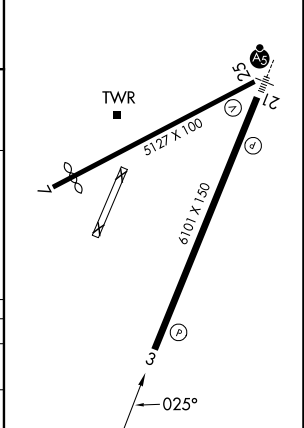
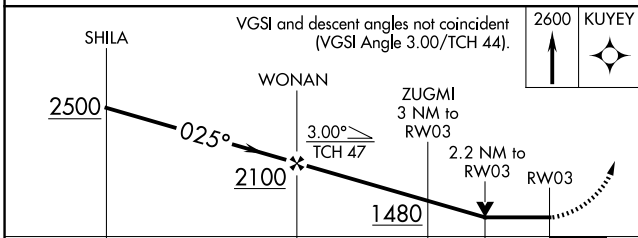
Procedure NA for arrivals at FLM VOR/DME on V517 southeast bound.

(IAF) LODLL 2700 345° (10)

FALMOUTH FLM



ELEV 482	<b>D</b> TDZE 481
REIL Rwy 3	
HIRL Rwy 3-21	
MIRL Rwy 7-25	



CATEGORY	A	B	C	D
LNVA MDA	1240-1 759 (800-1)	1240-1¼ 759 (800-1¼)	1240-2	759 (800-2)
CIRCLING	1260-1 778 (800-1)	1360-1¼ 878 (900-1¼)	1360-2½ 878 (900-2½)	1400-3 918 (1000-3)

EC-2, 11 JUN 2026 to 09 JUL 2026

EC-2, 11 JUN 2026 to 09 JUL 2026