

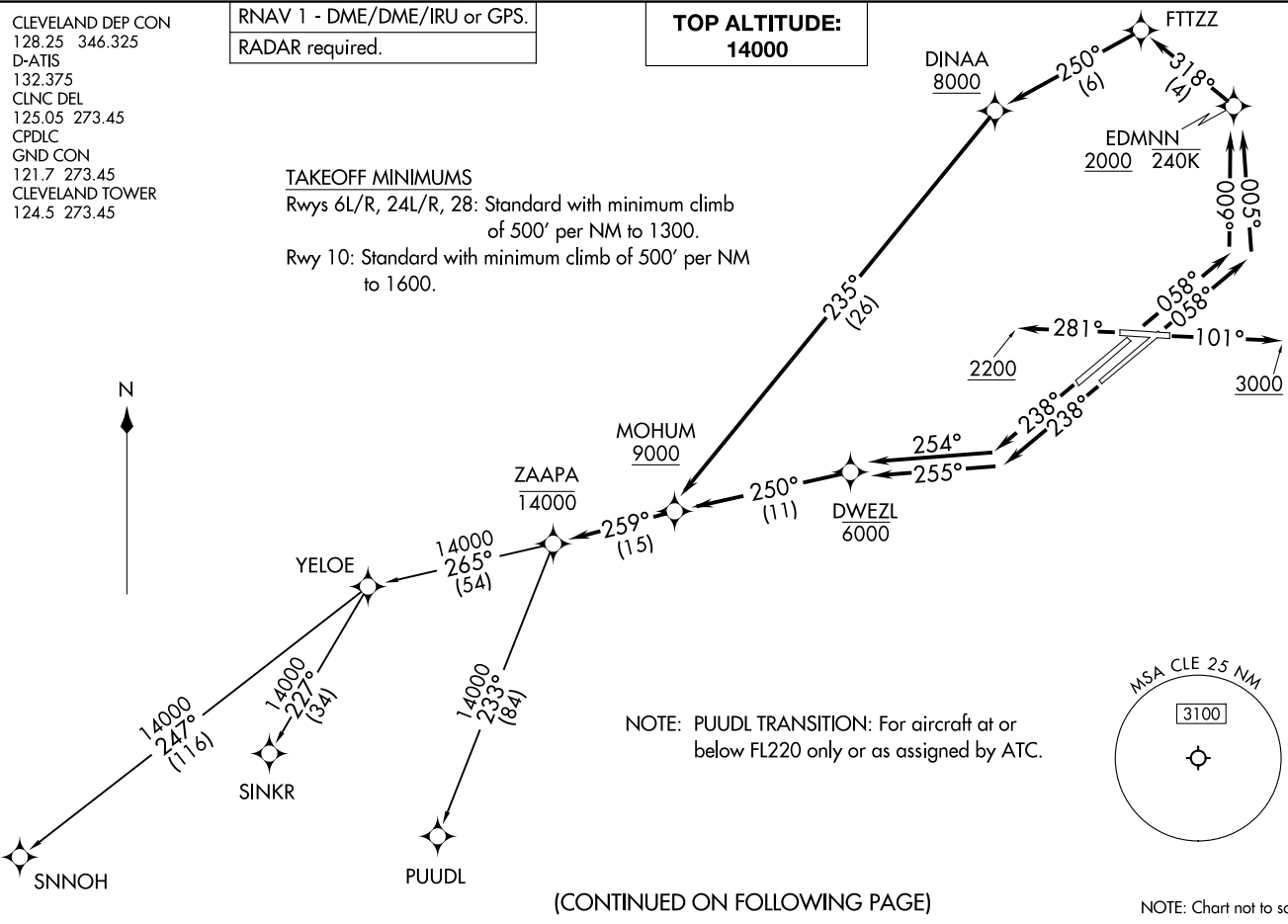
RNAV 1 - DME/DME/IRU or GPS.  
RADAR required.

**TOP ALTITUDE:**  
**14000**

CLEVELAND DEP CON  
128.25 346.325  
D-ATIS  
132.375  
CLNC DEL  
125.05 273.45  
CPDLC  
GND CON  
121.7 273.45  
CLEVELAND TOWER  
124.5 273.45

TAKEOFF MINIMUMS

Rwys 6L/R, 24L/R, 28: Standard with minimum climb  
of 500' per NM to 1300.  
Rwy 10: Standard with minimum climb of 500' per NM  
to 1600.



NOTE: PUUDL TRANSITION: For aircraft at or below FL220 only or as assigned by ATC.

(CONTINUED ON FOLLOWING PAGE)

NOTE: Chart not to scale.

ZAAPA SIX DEPARTURE (RNAV)  
(ZAAPA6.ZAAPA) 27NOV25

CLEVELAND, OHIO  
CLEVELAND-HOPKINS INTL (CLE)

(ZAAPA6.ZAAPA) 25331  
ZAAPA SIX DEPARTURE (RNAV)

CLEVELAND-HOPKINS INTL (CLE)  
CLEVELAND, OHIO

A-84 (FAA)

# ZAAPA SIX DEPARTURE (RNAV)



## DEPARTURE ROUTE DESCRIPTION

TAKEOFF RUNWAY 6L: Climb on heading 058° to intercept course 009° to cross EDMNN at or above 2000 and at or below 240K, then on track 318° to FTTZZ, then on track 250° to cross DINAA at or above 8000, then on track 235° to cross MOHUM at or above 9000, thence....

TAKEOFF RUNWAY 6R: Climb on heading 058° to intercept course 005° to cross EDMNN at or above 2000 and at or below 240K, then on track 318° to FTTZZ, then on track 250° to cross DINAA at or above 8000, then on track 235° to cross MOHUM at or above 9000, thence....

TAKEOFF RUNWAY 10: Climb on heading 101° to 3000, then as assigned by ATC for RADAR vectors to cross MOHUM at or above 9000, thence....

TAKEOFF RUNWAY 24L: Climb on heading 238° to intercept course 255° to cross DWEZL at or below 6000, then on track 250° to cross MOHUM at or above 9000, thence....

TAKEOFF RUNWAY 24R: Climb on heading 238° to intercept course 254° to cross DWEZL at or below 6000, then on track 250° to cross MOHUM at or above 9000, thence....

TAKEOFF RUNWAY 28: Climb on heading 281° to 2200, then as assigned by ATC for RADAR vectors to cross MOHUM at or above 9000, thence....

....on track 259° to cross ZAAPA at or below 14000, then on (transition). Maintain 14000, expect filed altitude ten minutes after departure.

PUUDL TRANSITION (ZAAPA6.PUUDL)

SINKR TRANSITION (ZAAPA6.SINKR)

SNNOH TRANSITION (ZAAPA6.SNNOH)

EC-2, 11 JUN 2026 to 09 JUL 2026

EC-2, 11 JUN 2026 to 09 JUL 2026