

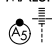
LOC I-COS 109.9	APP CRS 352°	Rwy Ldg TDZE Apt Elev	11022 6075 6187
---------------------------	------------------------	-----------------------------	--------------------------------------------

ILS or LOC RWY 35L

CITY OF COLORADO SPRINGS MUNI (COS)

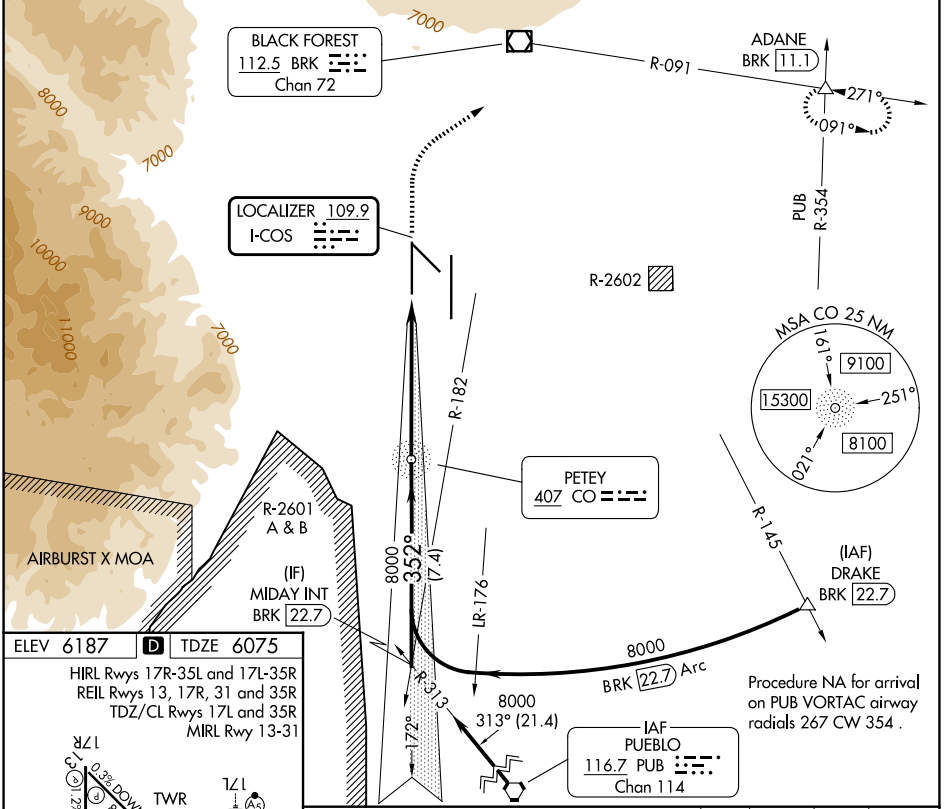
ADF required for LOC only.

⚠ RADAR monitoring required when R-2601 in use. For inop ALS, increase S-LOC 35L Cat C/D visibility to RVR 4500.
*RVR 1800 authorized with use of FD or AP or HUD to DA.

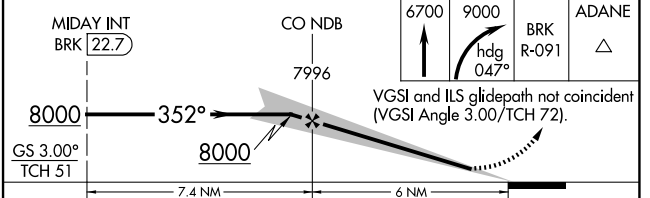
MALSR 

MISSED APPROACH: Climb to 6700 then climbing right turn to 9000 on heading 047° and BRK VOR/DME R-091 to ADANE INT/BRK 11.1 DME and hold.

ATIS 125.0 254.3	SPRINGS APP CON 124.0 257.875	SPRINGS TOWER 119.9 360.6	GND CON 121.7 348.6	CLNC DEL 134.45 363.125
----------------------------	-----------------------------------------	-------------------------------------	-------------------------------	-----------------------------------



ELEV 6187	D	TDZE 6075			
HIRL Rwy 17R-35L and 17L-35R REIL Rwy 13, 17R, 31 and 35R TDZ/CL Rwy 17L and 35R MIRL Rwy 13-31					
FAF to MAP 6 NM					
Knots	60	90	120	150	180
Min:Sec	6:00	4:00	3:00	2:24	2:00



CATEGORY	A	B	C	D
S-ILS 35L*	6275/24		200 (100-½)	
S-LOC 35L	6340/24		265 (200-½)	
CIRCLING	6740-1 553 (600-1)	6760-1 573 (600-1)	6980-2¼ 793 (800-2¼)	7240-3 1053 (1100-3)

SW-1, 11 JUN 2026 to 09 JUL 2026

SW-1, 11 JUN 2026 to 09 JUL 2026