

LOC/DME I-AHI 109.1 Chan 28	APP CRS 352°	Rwy Ldg 13500 TDZE 6118 Apt Elev 6187
--	------------------------	--

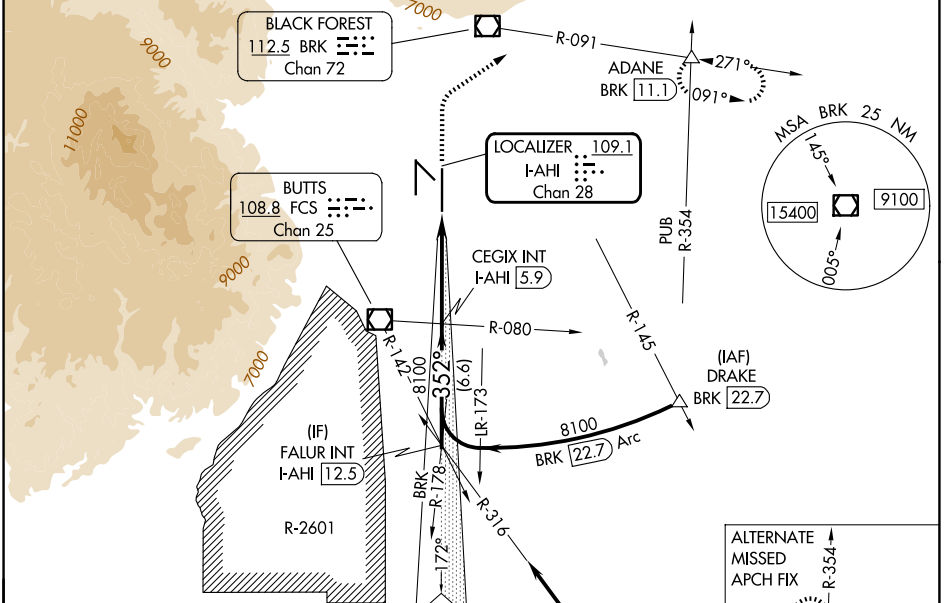
ILS or LOC RWY 35R

CITY OF COLORADO SPRINGS MUNI (COS)

⚠ RADAR required when R-2601 in use.

⚠ MISSED APPROACH: Climb to 6700 then climbing right turn to 9000 on heading 047° and on BRK VOR/DME R-091 to ADANE INT/BRK 11.1 DME and hold.

ATIS 125.0 254.3	SPRINGS APP CON 124.0 257.875	SPRINGS TOWER 119.9 360.6	GND CON 121.7 348.6	CLNC DEL 134.45 363.125
----------------------------	---	-------------------------------------	-------------------------------	-----------------------------------



ELEV 6187 **D** TDZE 6118

MIRL Rwy 13-31
HIRL Rws 17R-35L and 17L-35R
REIL Rws 13, 17R, 31 and 35R
TDZ/CL Rws 17L and 35R

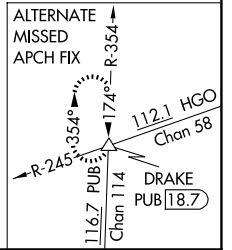
ZL 1
0.3% DOWN
8270 X 130
0.5% UP
11022 X 150
0.2% DOWN
13500 X 130
0.6% UP
35L

ZL 1
0.6% DOWN
13500 X 130
0.6% UP
35R

352°

Procedure NA for arrival on PUB VORTAC airway radials 267 CW 354.

IAF PUEBLO 116.7 PUB Chan 114



FAF to MAP 6.1 NM

Knots	60	90	120	150	180
Min:Sec	6:06	4:04	3:03	2:26	2:02

CATEGORY	A	B	C	D
	S-ILS 35R	6318/40	200 (200-¾)	
S-LOC 35R	6420/55	302 (300-1)	6420/45	302 (300-¾)
CIRCLING	6740-1 553 (600-1)	6800-1 613 (700-1)	7040-2½ 853 (900-2½)	7260-3 1073 (1100-3)

6700, 9000, ADANE

CEGIX INT I-AHI 5.9

FALUR INT I-AHI 12.5

8100, 8100, 8100

352°, 352°

GS 3.00° TCH 55

Use I-AHI DME when on the localizer course.

6.6 NM, 5.3 NM, 0.8 NM

I-AHI DME ANTENNA *I-AHI 0.6

*LOC only

SW-1, 11 JUN 2026 to 09 JUL 2026

SW-1, 11 JUN 2026 to 09 JUL 2026