

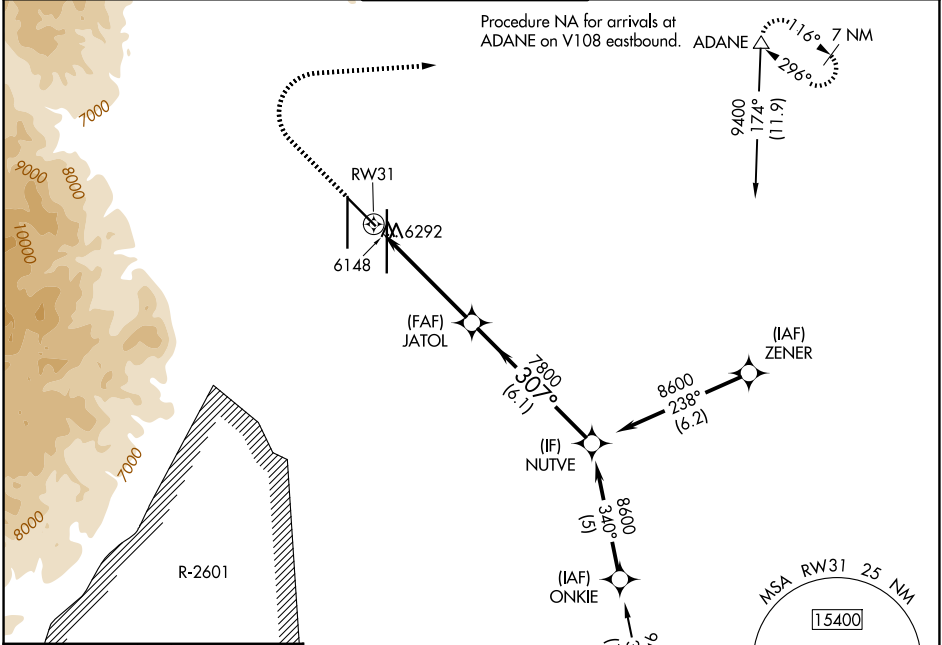
WAAS CH 40040 W31A	APP CRS 307°	Rwy Ldg TDZE Apt Elev	7914 6156 6187
---------------------------------	------------------------	-----------------------------	---

RNAV (GPS) RWY 31

CITY OF COLORADO SPRINGS MUNI (COS)

DME/DME RNP-0.3 NA.		MISSED APPROACH: Climb to 6700 then climbing right turn to 9000 direct ADANE and hold.		
---------------------	--	--	--	--

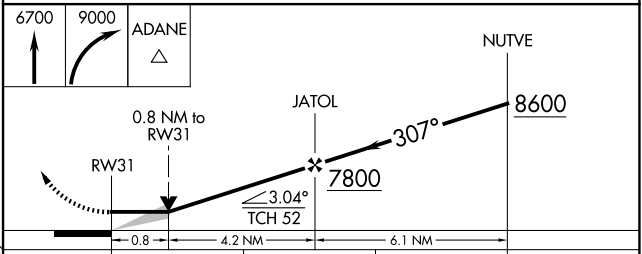
ATIS 125.0 254.3	SPRINGS APP CON 124.0 257.875	SPRINGS TOWER 119.9 360.6	GND CON 121.7 348.6	CLNC DEL 134.45 363.125
----------------------------	---	-------------------------------------	-------------------------------	-----------------------------------



ELEV 6187	D	TDZE 6156
-----------	----------	-----------

MIRL Rwy 13-31
 REIL Rwy 13, 17R, 31 and 35R
 TDZ/CL Rwy 17L and 35R

Procedure NA for arrivals on PUB VORTAC
 airway radials 267 CW 354.



CATEGORY	A	B	C	D
LP MDA	6440-1	284 (300-1)	6440-7/8	284 (300-7/8)
LNAV MDA	6560-1	404 (400-1)	6560-1 1/8	404 (400-1 1/8)
CIRCLING	6740-1 553 (600-1)	6800-1 613 (700-1)	7040-2 1/2 853 (900-2 1/2)	7260-3 1073 (1100-3)

SW-1, 11 JUN 2026 to 09 JUL 2026

SW-1, 11 JUN 2026 to 09 JUL 2026