

RNAV (RNP) Z RWY 35L

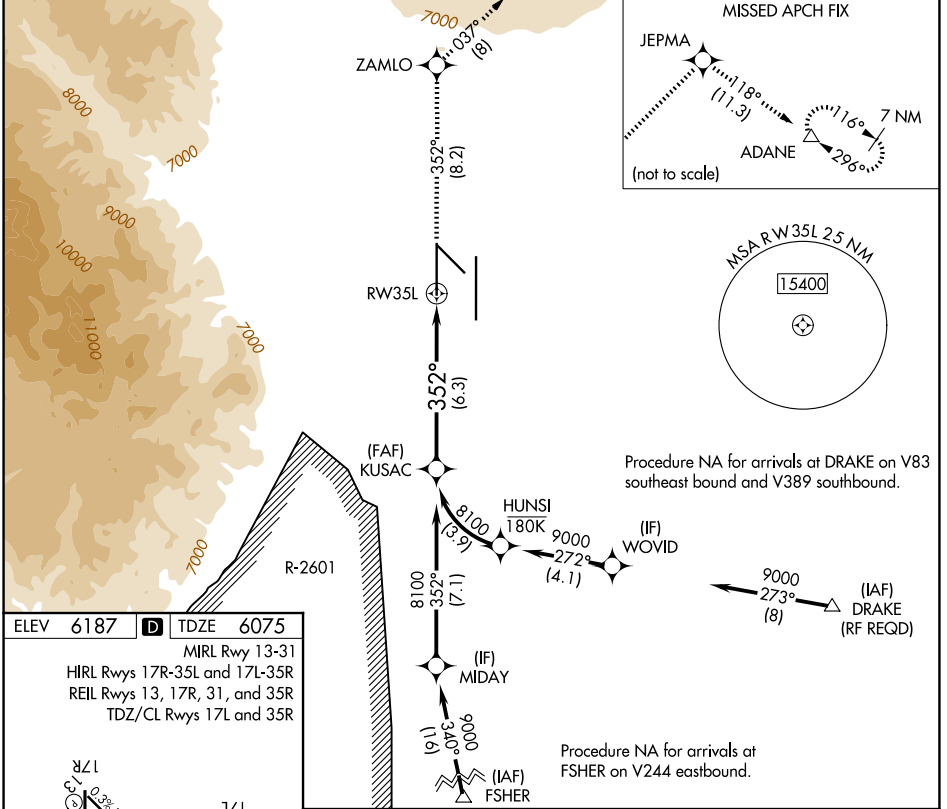
CITY OF COLORADO SPRINGS MUNI (COS)

APP CRS	Rwy Ldg	11022
352°	TDZE	6075
	Apt Elev	6187

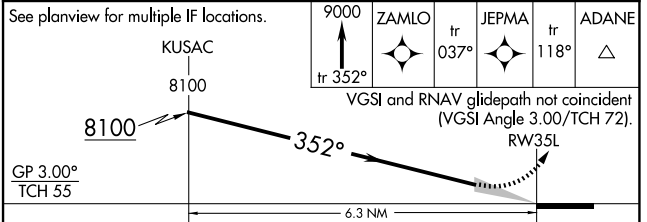
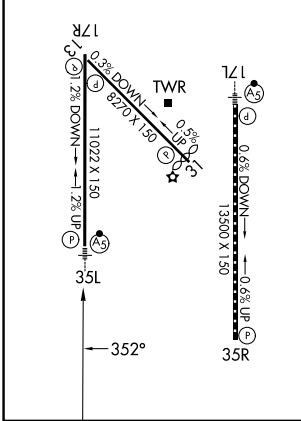
▼ For uncompensated Baro-VNAV systems, procedure NA below -21°C (-5°F) or above 45°C (113°F). GPS required. For inop MALSRS increase RNP 0.15 visibility all Cats to RVR 5000. RADAR monitoring required when R-2601 in use.

MALSRS MISSED APPROACH: Climb to 9000 on track 352° to ZAMLO and on track 037° to JEPMA and on track 118° to ADANE and hold.

ATIS 125.0 254.3	SPRINGS APP CON 124.0 257.875	SPRINGS TOWER 119.9 360.6	GND CON 121.7 348.6	CLNC DEL 134.45 363.125
----------------------------	---	-------------------------------------	-------------------------------	-----------------------------------



ELEV 6187	D	TDZE 6075
MIRL Rwy 13-31		
HIRL Rwys 17R-35L and 17L-35R		
REIL Rwys 13, 17R, 31, and 35R		
TDZ/CL Rwys 17L and 35R		



CATEGORY	A	B	C	D
RNP 0.15 DA		6372/30	297 (200- $\frac{5}{8}$)	
RNP 0.30 DA		6427/40	352 (300- $\frac{3}{4}$)	

AUTHORIZATION REQUIRED

SW-1, 11 JUN 2026 to 09 JUL 2026

SW-1, 11 JUN 2026 to 09 JUL 2026