

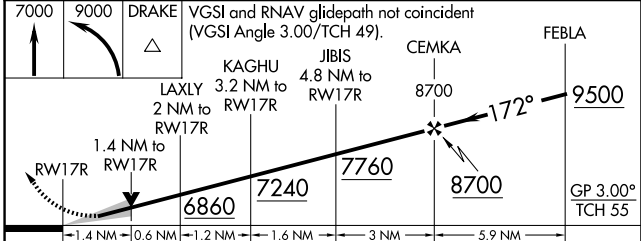
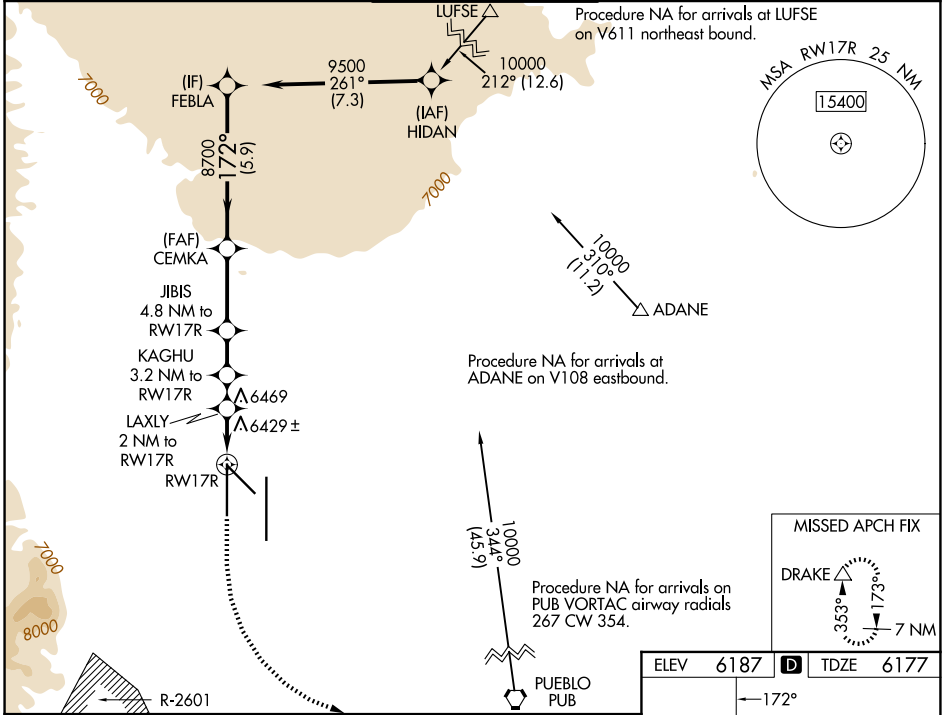
WAAS CH 72800 W17B	APP CRS 172°	Rwy Ldg TDZE 6177 Apt Elev 6187
--	------------------------	---

RNAV (GPS) Y RWY 17R

CITY OF COLORADO SPRINGS MUNI (COS)

RNP APCH - GPS.	<p>▼ For uncompensated Baro-VNAV systems, LNAV/VNAV NA below -21°C or above 54°C. ▲ Simultaneous approach authorized with ILS or LOC RWY 17L and ILS RWY 17L (SA CAT I). LNAV procedure NA during simultaneous operations. Use of FD or AP providing RNAV track guidance required during simultaneous operations.</p>	MISSED APPROACH: Climb to 7000 then climbing left turn to 9000 direct DRAKE and hold.
-----------------	---	---

ATIS 125.0 254.3	SPRINGS APP CON 124.0 257.875	SPRINGS TOWER 119.9 360.6	GND CON 121.7 348.6	CLNC DEL 134.45 363.125
----------------------------	---	-------------------------------------	-------------------------------	-----------------------------------



ELEV	6187	TDZE	6177
------	------	------	------

<p>172°</p> <p>9500</p> <p>8700</p> <p>8270 X 130</p> <p>11022 X 150</p> <p>35L</p>	<p>TWR</p> <p>0.3% DOWN</p> <p>0.5% UP</p>	<p>171</p> <p>0.3% DOWN</p> <p>0.5% UP</p> <p>13500 X 150</p> <p>35R</p>
---	--	--

<p>MIRL Rwy 13-31</p> <p>TDZ/CL Rwy 17L and 35R</p> <p>REIL Rwy 13, 17R, 31 and 35R</p> <p>HIRL Rwy 17R-35L and 17L-35R</p>

SW-1, 11 JUN 2026 to 09 JUL 2026

SW-1, 11 JUN 2026 to 09 JUL 2026