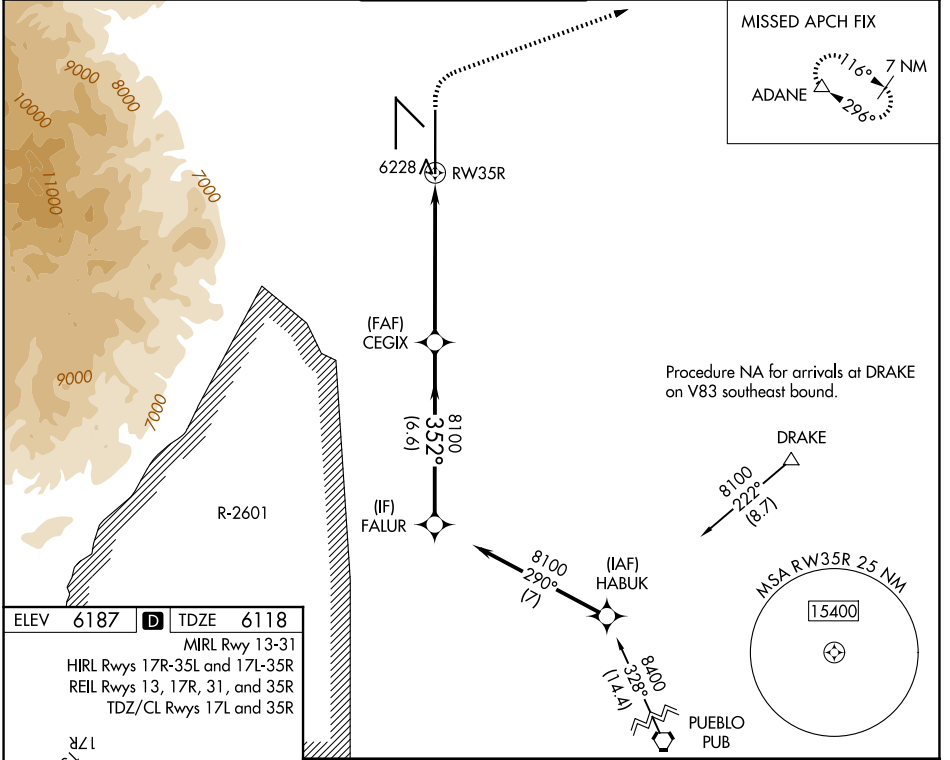


WAAS CH 53602 W35B	APP CRS 352°	Rwy Ldg TDZE Apt Elev	13500 6118 6187
----------------------------------------	------------------------	-----------------------------	--------------------------------------------

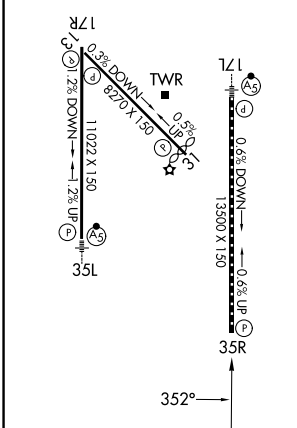
RNAV (GPS) Y RWY 35R

CITY OF COLORADO SPRINGS MUNI (COS)

<p>▽ For uncompensated Baro-VNAV systems, LNAV/VNAV NA below -21°C (-5°F) or above 39°C (103°F). DME/DME RNP-0.3 NA. RADAR monitoring required when R-2601 in use.</p>		<p>MISSED APPROACH: Climb to 6600 then climbing right turn to 9000 direct ADANE and hold.</p>		
ATIS 125.0 254.3	SPRINGS APP CON 124.0 257.875	SPRINGS TOWER 119.9 360.6	GND CON 121.7 348.6	CLNC DEL 134.45 363.125



ELEV 6187	D	TDZE 6118
MIRL Rwy 13-31		
HIRL Rwys 17R-35L and 17L-35R		
REIL Rwys 13, 17R, 31, and 35R		
TDZ/CL Rwys 17L and 35R		



VGSI and RNAV glidepath not coincident (VGSI Angle 3.00/TCH 71).

FALUR	CEGIX	RW35R
8100	8100	8100
GP 3.00° TCH 55	352°	1 NM
6.6 NM	5.1 NM	1 NM
6600	9000	ADANE
*1 NM to RW35R	*LNAV only	

CATEGORY	A	B	C	D
LPV DA		6318/40	200 (200-¾)	
LNAV/VNAV DA		6399/45	281 (300-¾)	
LNAV MDA	6500/55	382 (400-1)	6500/60	382 (400-1¼)
CIRCLING	6740-1 553 (600-1)	6800-1 613 (700-1)	7040-2½ 853 (900-2½)	7260-3 1073 (1100-3)

SW-1, 11 JUN 2026 to 09 JUL 2026

SW-1, 11 JUN 2026 to 09 JUL 2026