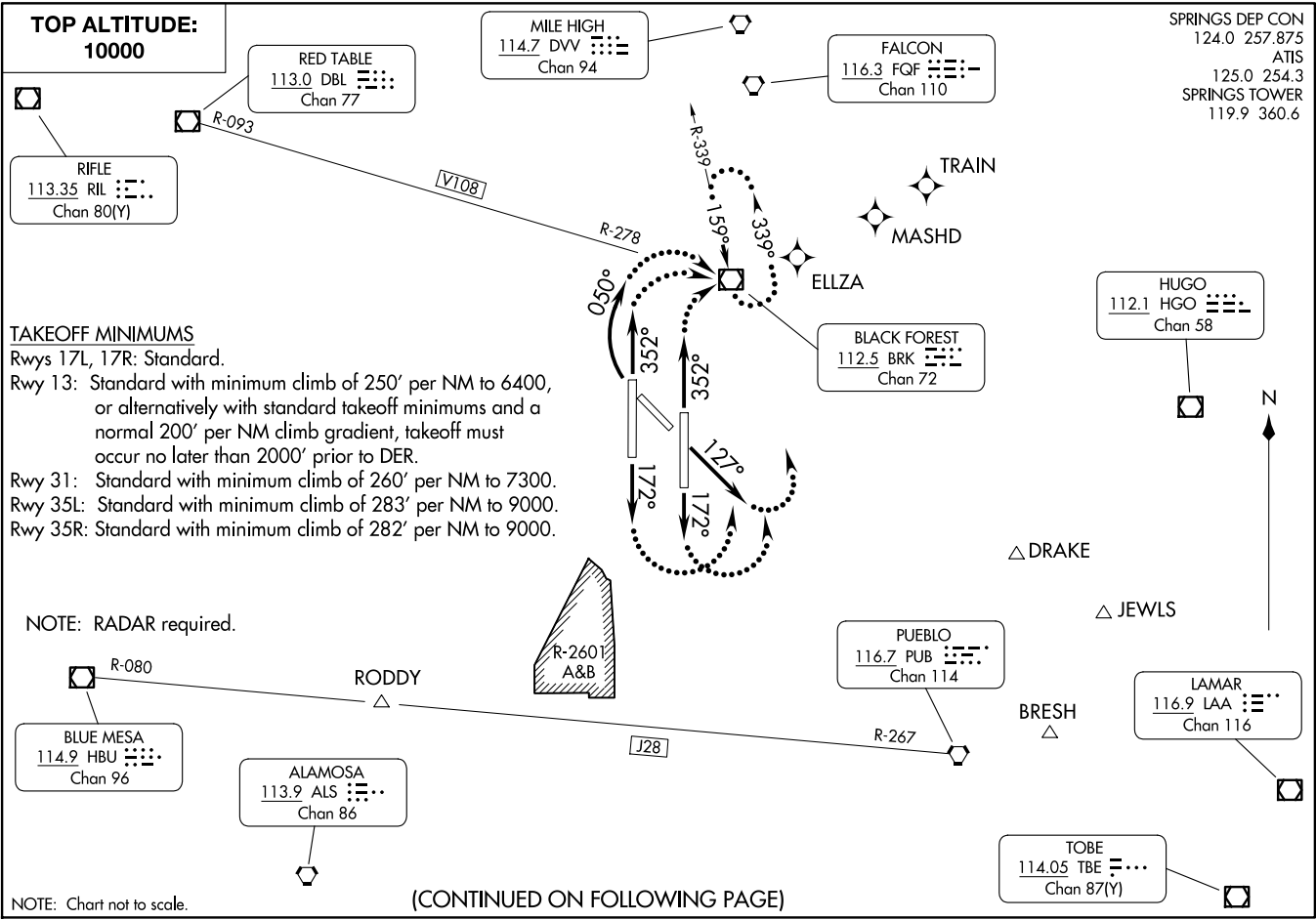


SPRINGS DEP CON
 124.0 257.875
 ATIS
 125.0 254.3
 SPRINGS TOWER
 119.9 360.6

SW-1, 11 JUN 2026 to 09 JUL 2026





DEPARTURE ROUTE DESCRIPTION

TAKEOFF RUNWAY 13: Climb heading 127° for RADAR vectors to filed/assigned route, thence. . . .

TAKEOFF RUNWAY 17L: Climb heading 172° for RADAR vectors to filed/assigned route, thence. . . .

TAKEOFF RUNWAY 17R: Climb heading 172° for RADAR vectors to filed/assigned route, thence. . . .

TAKEOFF RUNWAY 35R: Climb heading 352° for RADAR vectors to filed/assigned route, thence. . . .

TAKEOFF RUNWAY 35L: Climb heading 352° for RADAR vectors to filed/assigned route, thence. . . .

TAKEOFF RUNWAY 31: Climbing right turn heading 050° for RADAR vectors to filed/assigned route, thence. . . .

. . . . maintain 10000. Expect clearance to filed altitude/flight level ten minutes after departure.

LOST COMMUNICATIONS: If not in contact with departure control within 1 minute after departure from runways 13 and 17L/R turn left, from runway 31 and 35L/R turn right direct BRK VOR/DME, thence via filed/assigned route.

AIRCRAFT FILED V108 WESTBOUND: Continue climb in holding pattern to cross BRK VOR/DME at or above 14000.

SW-1, 11 JUN 2026 to 09 JUL 2026

SW-1, 11 JUN 2026 to 09 JUL 2026