

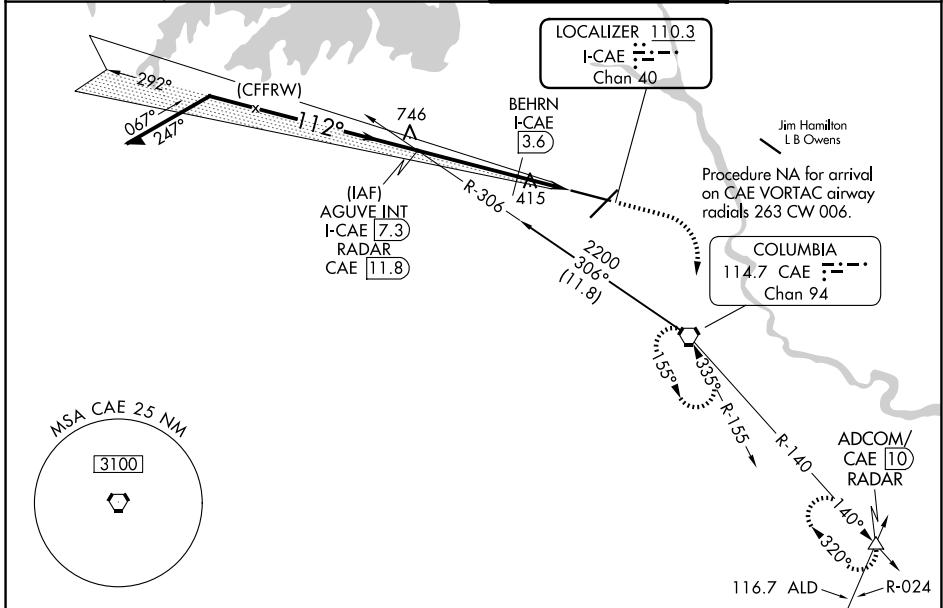
LOC/DME I-CAE 110.3 Chan 40	APP CRS 112°	Rwy Ldg 8601 TDZE 236 Apt Elev 236
--	------------------------	---

ILS or LOC RWY 11

COLUMBIA METRO (CAE)

DME or RADAR required for LOC only.	ALSF-2 	MISSED APPROACH: Climb to 1100 then climbing right turn to 2300 direct CAE VORTAC and hold, continue climb-in-hold to 2300. (TACAN aircraft confine on CAE VORTAC R-140 to ADCOM I/CAE VORTAC 10 DME and hold NW, right turn, 140° inbound)
For inop ALS, increase S-ILS 11 Cat E visibility to RVR 4000, S-LOC 11 Cats C/D/E visibility to 1½ SM, and BEHRN Minimums S-LOC 11 Cat E visibility to 1½ SM.		

ATIS 120.15	COLUMBIA APP CON 124.15 338.2 (110°-289°) 133.4 285.6 (290°-109°)	COLUMBIA TOWER 119.5 257.8	GND CON 121.9 348.6
-----------------------	---	--------------------------------------	-------------------------------



Remain within 15 NM	AGUVE INT I-CAE 7.3 RADAR	1100	2300	CAE	ELEV 236	TDZE 236
---------------------	---------------------------	------	------	-----	----------	----------

