

WAAS CH 40026 W23A	APP CRS 232°	Rwy Ldg TDZE Apt Elev	7001 213 236
--	------------------------	-----------------------------	---

RNAV (GPS) RWY 23

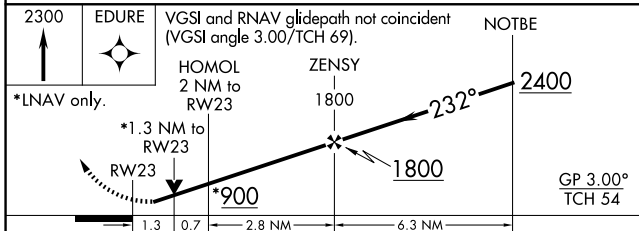
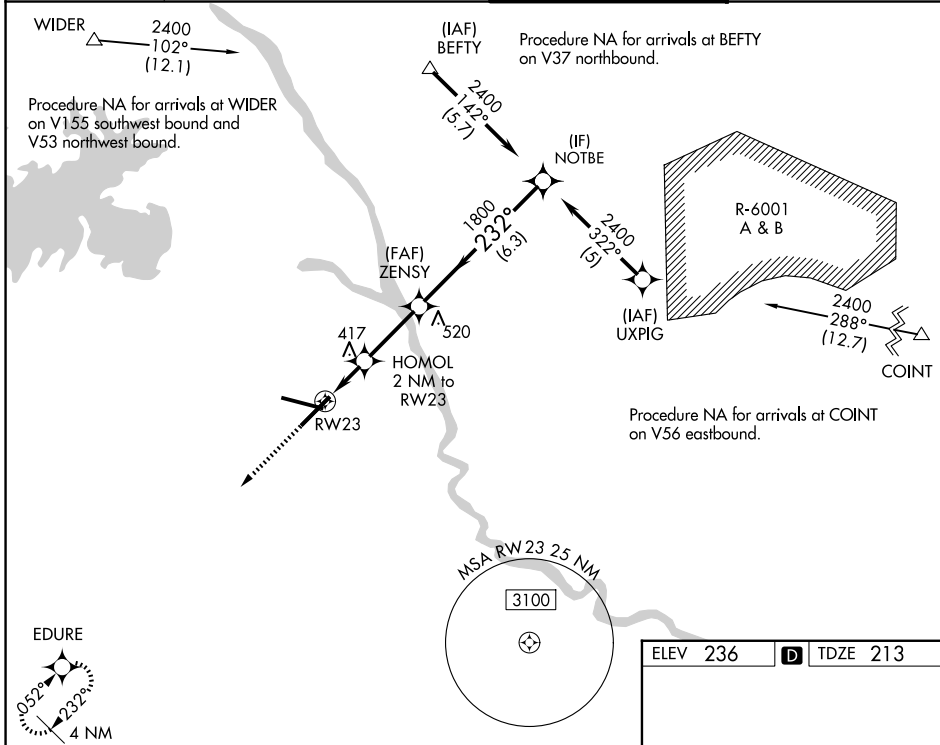
COLUMBIA METRO (CAE)

RNP APCH - GPS.

▼ For uncompensated Baro-VNAV systems, LNAV/VNAV NA below -15°C or above 54°C. Rwy 23 helicopter visibility reduction below 3/4 SM NA.

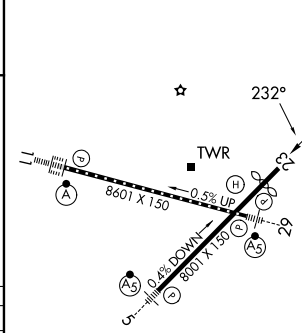
MISSED APPROACH: Climb to 2300 direct EDURE and hold.

ATIS 120.15	COLUMBIA APP CON 124.15 338.2 (110°-289°) 133.4 285.6 (290°-109°)	COLUMBIA TOWER 119.5 257.8	GND CON 121.9 348.6
-----------------------	---	--------------------------------------	-------------------------------



CATEGORY	A	B	C	D
LPV DA		503/50	290 (300-1)	
LNAV/VNAV DA		709-1 3/4	496 (500-1 3/4)	
LNAV MDA	680/50	467 (500-1)	680/60 467 (500-1 1/4)	680-1 1/2 467 (500-1 1/2)
CIRCLING	740-1 504 (600-1)	860-1 624 (700-1)	1040-2 1/4 804 (900-2 1/4)	1040-2 1/2 804 (900-2 1/2)

ELEV 236	TDZE 213
----------	----------



REIL Rwy 23
TDZ/CL Rwy 11
HIRL Rwy 5-23 and 11-29

SE-2, 11 JUN 2026 to 09 JUL 2026

SE-2, 11 JUN 2026 to 09 JUL 2026