

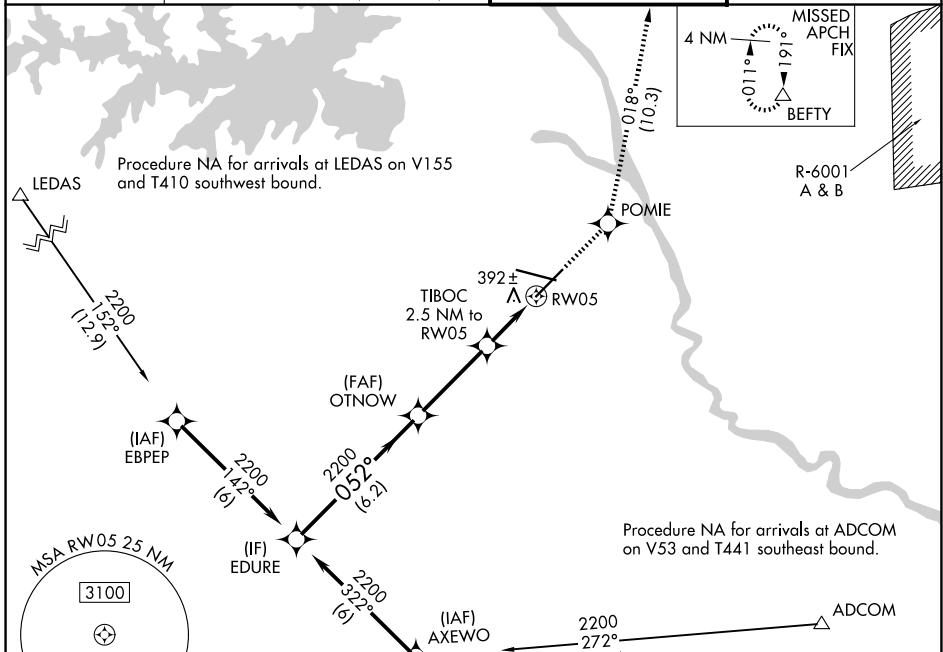
WAAS CH 45526 W05A	APP CRS 052°	Rwy Ldg TDZE Apt Elev	7001 228 236
--	------------------------	-----------------------------	---

RNAV (GPS) RWY 5

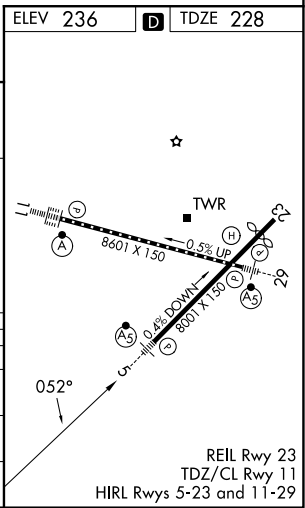
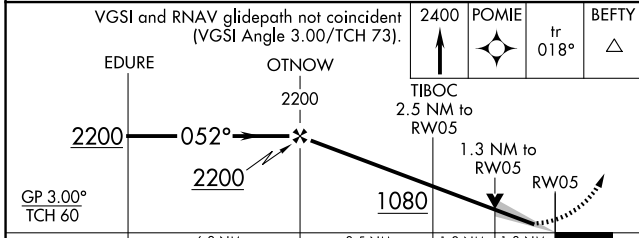
COLUMBIA METRO (CAE)

RNP APCH - GPS		MALSR 	MISSED APPROACH: Climb to 2400 direct POMIE and on track 018° to BEFTY and hold.
<p>▼ For uncompensated Baro-VNAV systems, LNAV/VNAV NA below -5°C or above 54°C. For inop ALS, increase LNAV/VNAV all Cats visibility to RVR 6000 and LNAV Cats C and D visibility to 1 3/8 SM. *RVR 1800 authorized with use of FD or AP or HUD to DA.</p>			

ATIS 120.15	COLUMBIA APP CON 124.15 338.2 (110°-289°) 133.4 285.6 (290°-109°)	COLUMBIA TOWER 119.5 257.8	GND CON 121.9 348.6
-----------------------	---	--------------------------------------	-------------------------------



ELEV 236	D TDZE 228
----------	-------------------



CATEGORY	A	B	C	D
LPV DA*	428/24		200 (200-1/2)	
LNAV/VNAV DA	638/40		410 (500-3/4)	
LNAV MDA	700/24 472 (500-1/2)		700/50 472 (500-1)	
CIRCLING	740-1 504 (600-1)	860-1 624 (700-1)	1040-2 1/4 804 (900-2 1/4)	1040-2 1/2 804 (900-2 1/2)

SE-2, 11 JUN 2026 to 09 JUL 2026

SE-2, 11 JUN 2026 to 09 JUL 2026