

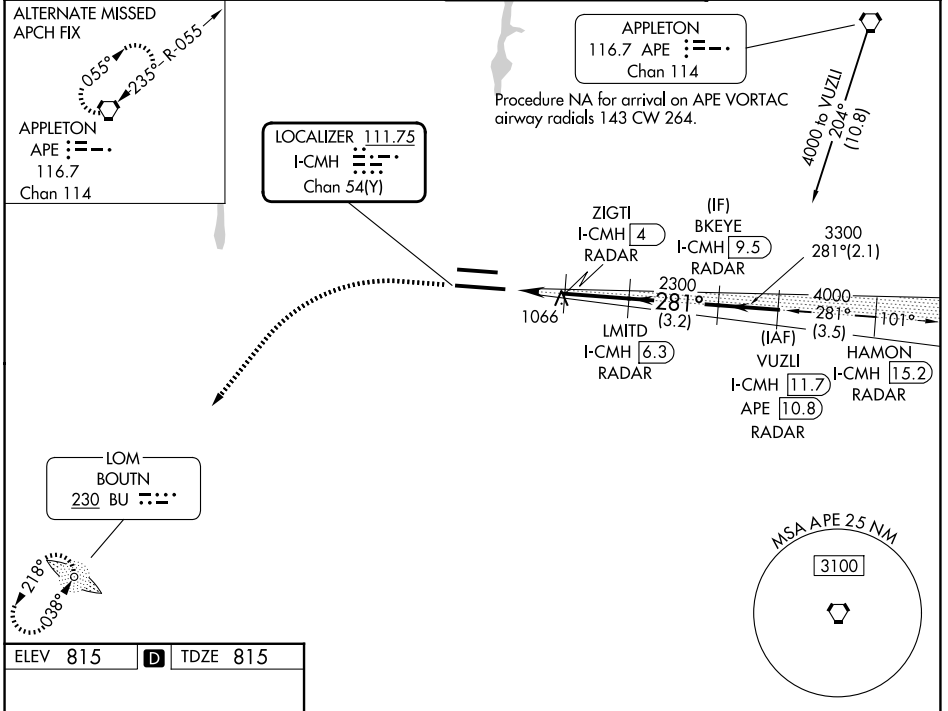
LOC/DME I-CMH <b>111.75</b> Chan <b>54 (Y)</b>	APP CRS <b>281°</b>	Rwy Ldg <b>10114</b> TDZE <b>815</b> Apt Elev <b>815</b>
--	------------------------	--

# ILS or LOC RWY 28L

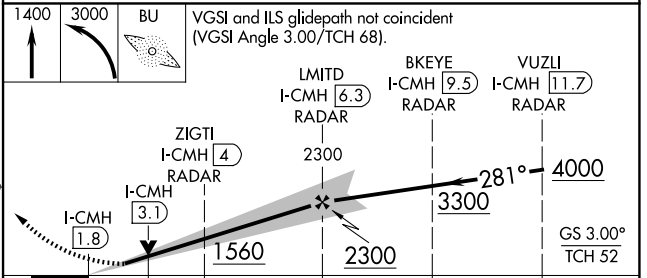
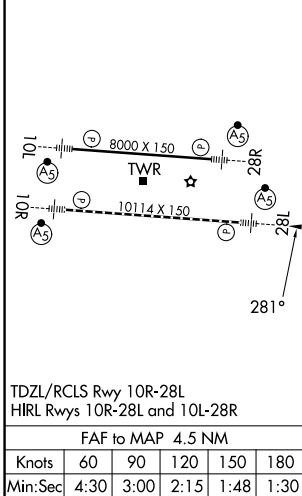
JOHN GLENN COLUMBUS INTL (CMH)

ADF required. DME or RADAR required.	MALSRL	MISSED APPROACH: Climb to 1400 then climbing left turn to 3000 direct BU LOM and hold.
<p>⚠ Simultaneous approach authorized.</p> <p>⚠ For inop ALS, increase S-LOC 28L Cat C/D visibility to 1 3/8 SM.</p>		

D-ATIS <b>124.6</b>	COLUMBUS APP CON <b>125.95 371.975</b>	COLUMBUS TOWER <b>132.7 257.8</b>	GND CON <b>121.9 348.6</b>
------------------------	---	--------------------------------------	-------------------------------



ELEV <b>815</b>	<b>D</b>	TDZE <b>815</b>
-----------------	----------	-----------------



EC-2, 11 JUN 2026 to 09 JUL 2026

EC-2, 11 JUN 2026 to 09 JUL 2026