

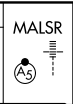
RNAV (RNP) Z RWY 10L

JOHN GLENN COLUMBUS INTL (CMH)

APP CRS	Rwy Ldg	8000
101°	TDZE	815
	Apt Elev	815

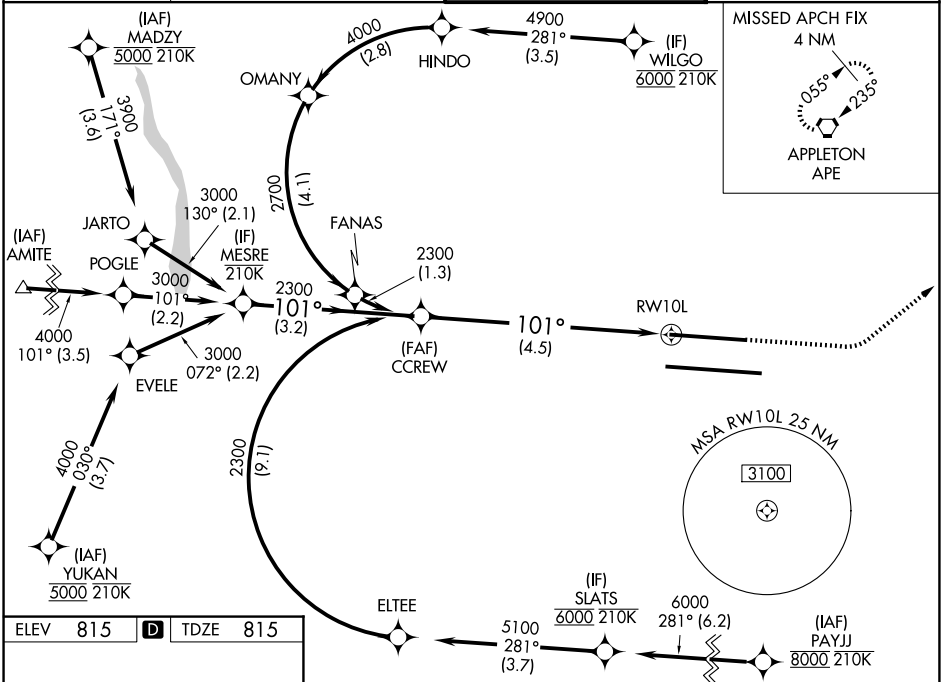
RNP APCH AR - GPS. Authorization required. From HINDO or ELTEE: RF.

Simultaneous approach authorized. For uncompensated Baro-VNAV systems, procedure NA below -1.4°C or above 54°C. For inop ALS, increase RNP 0.30 all Cats visibility to RVR 6000.



MISSED APPROACH:
Climb to 1400 then climbing left turn to 3000 direct APE VORTAC and hold.

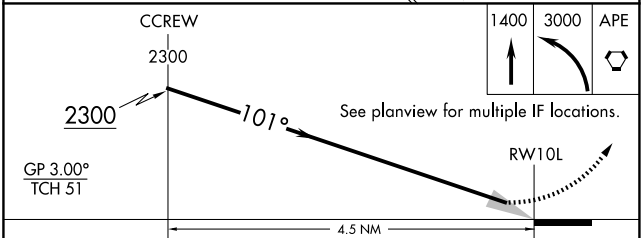
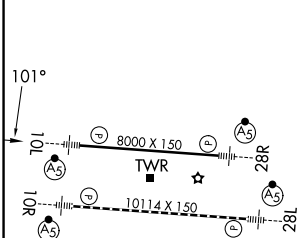
D-ATIS 124.6	COLUMBUS APP CON 125.95 371.975	COLUMBUS TOWER 132.7 257.8	GND CON 121.9 348.6
------------------------	---	--------------------------------------	-------------------------------



EC-2, 11 JUN 2026 to 09 JUL 2026

EC-2, 11 JUN 2026 to 09 JUL 2026

ELEV 815	D	TDZE 815
----------	----------	----------



CATEGORY	A	B	C	D
RNP 0.13 DA		1148/26	333 (400-1/2)	
RNP 0.26 DA		1198/35	383 (400-3/8)	
RNP 0.30 DA		1216/40	401 (500-3/4)	

TDZL/RCLS Rwy 10R and 28L
HIRL Rwy 10R-28L and 10L-28R

AUTHORIZATION REQUIRED